



The DEAF LUTHERAN



Official Publication of the International Lutheran Deaf Association & the Board for Missions of the Lutheran Church-Missouri Synod

January-February, 1995

St. Louis, Mo.

Volume 87, No. 1

Thy Word as Truth . . .

HELL, IS IT REAL?

Rev. Michael P. MacDonald
Chapel for the Deaf
1225 E. Morehead
Charlotte, N.C. 28204

Many people and some churches and religions do not believe there is a real place called "Hell." Is that true? Maybe people don't want to believe a place like hell is real because they want it to go away. But saying something is not real does not make that place disappear. What do you think? The best way to find out the truth about hell is from God Himself. God shows us in the Bible what the truth is about hell.



In each of the following verses, Jesus speaks about hell. Read them now and see for yourself: Matthew 5:22; 13:38-42; 41:25:41. Also, the following: Mark 9:47-49; Luke 16:23-28; Revelation 14:10-11; 19:20; 20:10; 20:15 and 21:8. There are many, many more verses in the Bible in which Jesus speaks about hell. All of these verses, and others, teach us something about hell:

1. Hell is a place of "Fire" and "burning sulfur and brimstone."
2. Hell is a place of punishment that will never stop.
3. Hell is a place prepared for the devil, his followers, people who not accept

Jesus as their Savior and those who rebel against God.

4. In each of these verses Jesus is the Person speaking about hell as a real place. Why would Jesus and others in the Bible speak about hell if it is not a real place? Jesus never sinned. That means He never lied. If Jesus never lied, then hell is a real place.

Now what do you think? Do you believe God's Word in the Bible or not? Either you agree with Jesus or you don't agree with Jesus and say He is a great liar.

We are warned in the Bible that many false prophets and false religion will teach people wrong and false ideas and lead people to hell. One religion that teaches that hell is not real is the Jehovah's Witnesses. (If you don't believe me, ask them.)

There are also many people who are not Christians who want to believe there is no hell and by disbelieving, they avoid the truth. What about these false teachers? Read the second chapter of II Peter and learn about these people.

Christians know that hell is real, and they

Please see **THY WORD AS TRUTH**: Page 2

NOTICE

All regional presidents and secretaries are asked to send in their new officer lists as voted at their last conference to ILDA President Ronald L. Madding, 1940 N.E. 57th Ave., Portland, Ore. 97213-3552 as soon as possible. The information is needed to expedite communications between the ILDA and the regions. Thank you.

ORIGINS OF LUTHERAN DEAF WORK

PART II

By Rev. Walter D. Uhlig (Ret.)
3832 N.W. 54th St.
Lincoln, N.E. 68534

(Continued from last issue)

March 4, 1894

By 1894 there were 11 deaf members in Bethlehem congregation. Pastor Reinke recognized his responsibility to them and carried it out by serving them spiritually. He obviously took the responsibility seriously because he not only served these deaf by means of

CONTINUED: FROM PAGE 1

THY WORD AS TRUTH . . .

also know that they do not need to be afraid about hell. Read John 3:14-17. Because of God's love for us, He sends His Son to show His love and the way to heaven. That way is through faith in Jesus. Jesus opens the way to heaven for us and heaven is free for us through faith only. We should try to share God's love for us through Jesus. We should share the Good News to help show people that heaven is free, forever, and a joyful place and help save people from hell (read Jude 23). The power of God's Word and its truth will save people from hell. Share that Good News with your friends so they can enjoy God's love and blessings now and forever.

The Apostle, John tells us, "My dear friends, many false prophets are in the world now, so don't believe every spirit. But test the spirits and see if they are from God. This is how you can know God's spirit. One spirit (person) says, "I believe that Jesus is the Christ who came to earth and became man." Another spirit (person) refuses to say this about Jesus. That spirit is not from God. That spirit is the enemy of Christ.

"HE (GOD) IS STRONG AND CAN HELP YOU NOT TO FALL. HE CAN BRING YOU BEFORE HIS GLORY WITHOUT ANY WRONG IN YOU AND GIVE YOU GREAT JOY. HE IS THE ONLY GOD. HE IS THE ONE WHO SAVES US. TO HIM GIVE THE GLORY, GREATNESS, POWER AND AUTHORITY THROUGH JESUS CHRIST FOR ALL TIMES PAST, NOW AND FOREVER. AMEN" (Jude 24-25)

As we begin yet another new church year, may we ever cling to the Lord in the one true faith foresaking all other false gods, until that great and wonderful day when He shall come for us.

German speech which the Detroit students could understand, but by also using the sign language of which he had a fair knowledge as N. P. Uhlig reportd in the January, 1948 issue of **The Exchange**, a cooperative information exchange of Ephphatha Conference members. By fair knowledge it can be presumed that he was able at least to conduct a simple conversation with the deaf signs.

Director Uhlig's letter supporting the appeal of Ed Pahl for church services for the deaf was send from Detroit on Feb. 14, 1894. On the following Sunday, Feb. 18, Rev. Reinke had a baptismal service in the church in the afternoon as reported in the Missouri Synod **Proceedings**, 1902. The service was just a day or two after Director Uhlig's letter had reached Rev. Reinke. According to the records of First Bethlehem congregation Martha Fraedrich, the daughter of August and Sophie Fraedrich, was baptized on that occasion. A number of deaf attended the baptismal service.

Just who attended the service is unknown, but it would not be surprising if Ed Pahl was in attendance. At least his spirit was there because in the informal discussion after the baptism the question was asked why there were no services in sign language for the deaf. Various arguments besides spiritual need of the deaf were presented with vigor. One was that other churches were offering services for the deaf. This was possibly an allusion to the prospering activity of the Rev. Hasentab, a Methodist pastor who was gaining popularity on the Chicago deaf scene.

We have no verbatim report of the discussion but it seems that after being unable to give a satisfactory answer to the deaf Rev. Reinke told the deaf to come back in two weeks and there would be a service for the deaf in the sign language.

Apparently Rev. Reinke had no definite plan in mind but he had some suggestions in the letter from Director Uhlig and felt confident that one of them could be used. Whether on the spur of the moment he decided that he would preach we do not know. He probably decided that he would do it as a last resort if no other means could be found to give the deaf their service in the sign language.

It soon became apparent to Rev. Reinke that the only way to have a service for the deaf in two weeks would be for him to preach it. He immediately set to work preparing for the

CONTINUED: FROM PAGE 2

ORIGINS OF LUTHERAN DEAF WORK

service. He chose the words of I John 4:16, "God is Love," as his sermon text.

Ed Pahl and possibly one or two others were drafted to help make the sermon easily signable. The time was not spent primarily in teaching sign language to Rev. Reinke but in suggesting appropriate expressions and signs as well as refining the word order to make the message more intelligible and readily understood by the deaf. Even though he knew some sign language this must have been a taxing time for Rev. Reinke since it was in Lent and his large congregation demanded much time even though he had his son Edward as assistant pastor. Congregational records show that 414 baptisms were performed in the year 1894.

When two o'clock arrived on March 4, 1894, 16 deaf persons were in attendance. These were Mr. and Mrs. C. Berner, Mr. and Mrs. Fred Christoffer, Theodore Fick, Mr. and Mrs. Jacob Heinold, August Henschel, Mr. and Mrs. Edward J. Pahl, Fred Rapp, Mr. and Mrs. Fred Schmidt, Matthew Steinmetz and Mr. and Mrs. Nicolas Steinmetz.

Rev. Reinke's sermon was a simple presentation of the need and reality of God's love for sinful mankind, hearing and deaf. The deaf were joyous that they had heard the Word of God in language that they could understand so that they could more readily appreciate the grace of a loving God. The promise that there would be future services where they could worship and understand made their hearts more happy.

The life of Rev. August H. Reinke changed radically with that first Lutheran service for the deaf in the sign language. The key to greater service had been found. Undoubtedly Rev. Reinke had thought much about how to serve the spiritual needs of his deaf members and others, but apparently without the realization that the means to do so was so close at hand. His eyes were now opened and he saw the enlarged task before him.

1896-1899

Just as amazing as the fact that Rev. Reinke could conduct a service for the deaf is the zeal that he showed in carrying out this new task. He reported to Synod at its convention in 1896 that he had held services

in Cincinnati, Louisville, Monroe, Elkhart, Fort Wayne, Peoria, Galesburg, Lincoln and Sheboygan. In addition, services were held monthly in Chicago and Milwaukee and bimonthly in St. Louis.

It was obvious that Rev. August Reinke could not continue carrying this load alone for a long time. At the synodical convention in 1896 a plea was made for Synod to assume the work of bringing the Gospel to the deaf. The resolution was passed enthusiastically and a committee was selected to administer the work with Rev. August Reinke as chairman.

Even before being placed in charge of the deaf work Rev. Reinke took steps to expand it. On one of his trips to St. Louis he visited the Seminary to urge students to learn the sign language. Four students showed interest in the work, T. Wangerin, H. Bentrup, E. Duemling and E. Giese.

After Synod decided to carry on the work as part of its mission program the first two were soon installed in Milwaukee and Louisville while Duemling served deaf briefly in Detroit in connection with his hearing congregation. Giese did not enter deaf work. One of the unsung heroes of the deaf work was Mrs. Jacoby of St. Louis who did an excellent job in teaching these men and others the sign language.

Interest in the deaf mission work was high in Synod as the staff workers began to grow. Rev. Arthur Reinke, a younger son of Rev. August Reinke, was installed in 1897 in Chicago. Soon came Rev. A. Boll, Rev. William Gielow and Rev. John Salvner with more to follow as the mission prospered.

The heroic labors of Rev. August H. Reinke ended in November, 1899, when his Lord called him to his eternal rest, a respite that he richly deserved after his yeoman service to the Lord, His church, and the deaf.

Rev. August Reinke's contribution in the establishment of mission work among the deaf was great, but as Aaron and Hur held up the arms of Moses to support him, so the work of men like Ed Pahl, President J. Huegli, and Director Hermann Uhlig dare not be minimized in the early history of our deaf mission work.

The material for this article has been

CROSS OF CHRIST, EDMONTON HAS NEW DEAF YOUTH PROGRAM COORDINATOR

As of September, 1994, Nicholas Wasylowich has been busy developing a Deaf Youth Program for the sponsoring congregation, Cross of Christ Lutheran Church of the Deaf, Edmonton, Alberta. The year long project will be concluded with a Canada-wide Deaf Youth Gathering/Christian Leadership Training Event Aug. 16-20, 1995--a "first." To mark the celebration of the 100th anniversary of the Walther League and Wheat Ridge Ministries, Canadian

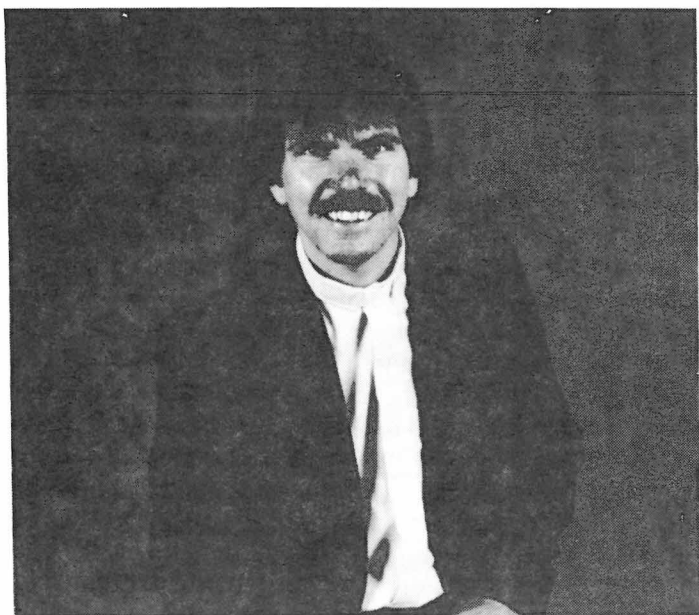
Walther League Alumni have lent their support to their special project. The executive officers of ILDA have also whole heartedly supported the project.

Wasylowich, a recent graduate of Concordia Lutheran Seminary, Edmonton, deferred his candidacy for parish placement so that he may further his studies in American Sign Language (ASL) and deaf culture.

* * * *

Trinity Lutheran Church for the Deaf, Vancouver, B.C. celebrated its 65th anniversary in September. The church is served by Rev. Wayne C. Bottlinger. Congratulations and blessings!

Remember those old TTY's that were the wonders of the deaf community years ago and allowed deaf people to use the telephone for the first time? (Of course we do!!) Cross of Christ Lutheran Church at Edmonton, Alberta and Pax Natura (the ranch at Clyde) are donating four of the models with couplers in perfect working order to Lutheran Church Archives and Edmonton Telephone Historic Association. Our new TTY's are greatly miniaturized from the monsters of those days, but even so, those old TTY's were the wonders of the day.



Nicholas Wasylowich

CONTINUED: FROM PAGE 3

ORIGINS OF LUTHERAN DEAF WORK

drawn from a host of miscellaneous sources. Synodical Proceedings, anniversary articles including some from Enno Duemling, A. R. Suelflow, Walter Bellhorn, Walter Uhlig, research by Theo. Delaney and other miscellaneous articles provided information. The chief source of detailed information was the articles, correspondence and statement of N. P. Uhlig who served in the deaf work when it was 16 years (1912) and 61 years (1957) old.

Other factors besides a natural indolence are responsible for the fact that this article has no footnotes. We are sorry for that but we will honor any requests for substantiation of statements made in the article.

March, 1994

Walter D. Uhlig
Lincoln, NE



DO YOU KNOW THIS LADY?--Pictured is Mrs. Emma Mappes, wife of the late Pastor Ernest Mappes. She was a special guest at the 1994 Ephphatha Conference near Omaha. Mrs. Mappes was celebrating her 93rd birthday. Congratulation!--Photo courtesy, Eleanor Bauer, Edmonton, Alberta.

★ WITH OUR FRIENDS NEAR AND FAR ★

Rev. George Ring of Des Moines, Iowa underwent a gall bladder operation a short time ago and is reported to be doing well.

o-0-o

Pastor Martin Hewitt recently used two of the cat's proverbial "nine lives." On a visit to Vancouver, B.C. in October, he took a bad fall, sustaining multiple lacerations and bruises. Next, a bad driver broadsided his new Chevrolet Caprice, pushing the reinforced door in only four inches. However, the door glass exploded, flying forward and narrowly missing him. "He shall give His angels charge over thee. . . ."

o-0-o

Some ILDA members have visited **Holden Village** near Chelan, Wash. Wildly exaggerated news accounts have reported that 300,000 people had been evacuated from the town of Chelan when only 3,000 reside there! Holden Village was not, at any time, in danger from the fires in the North Cascade mountains, although contingency plans had been made. The news accounts did, however, hurt the Village considerably due to the fact that there were many cancellations with the consequence of lost revenue, which was badly needed. Others accepted "rain checks" good for next year.

o-0-o

We were greatly saddened to learn of the passing of **Mrs. Evelyn DeMeyere** of Kalamazoo, Mich. on Sept. 28. She and her husband, Emil, were loyal members of the ILDA and their home congregation. She was the mother of Roger DeMeyere, Presently superintendent of the Lutheran School for the Deaf in Detroit.

o-0-o

Friends may be interested to know that **Mrs. Emma Mappes**, widow of the long time pastor Rev. Ernest Mappes recently observed her 93rd birthday. She continues to reside in Lincoln, Neb. where she has for many years.

o-0-o

Hope Lutheran Church, Portland, Ore. has adopted a 1995 budget of \$51,422 which includes \$2,200 for missions. Because the church building is paid for and also because a sewer obligation is paid off, the budget is less than a year ago.

o-0-o

We have learned belately that **Rev. Bill Ludwig** was a bed patient at Providence Hospital in Seattle July 21, the day after his wife Sigrid returned home from her trip to Estonia. The pastor was in the hospital for

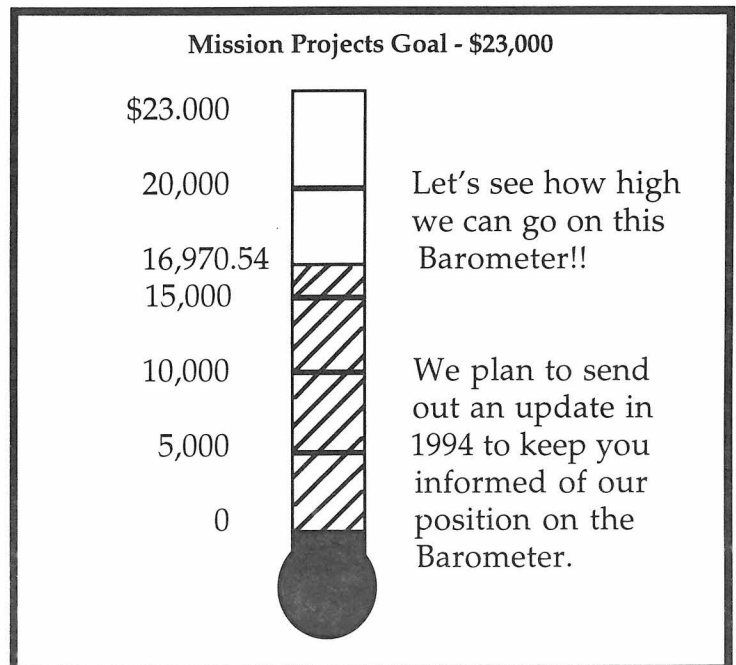
only a day following prostate surgery. Apparently he has made a good recovery.

o-0-o

ILDA President-elect Larry Gorton and Rev. Martin Hewitt were in St. Louis Sept. 30 to Oct. 2 for a meeting of the Missouri Synod's standing committee on the deaf ministry. Mr. Gorton will take over the helm of the ILDA presidency next summer at its convention in Chicago.

o-0-o

The second National Deaf Senior Citizens Conference in Columbus, Ohio drew about 1,400 participants, some from as far away as Netherlands, Spain, China, Mexico and Canada. The next one will be in Arizona.



Yes!! I want to help bring God's Word to many other people through the ILDA Mission Projects. Enclosed is my offering of \$_____.

Name: _____

Address: _____

City: _____ State: _____ Zip: _____

Mail to: Mr. Dennis Konkel, Treasurer
ILDA Mission Projects
18609 Chickadee Lane
Gaithersburg, MD 20879

May God bless both the gift and the giver.
All contributions are tax deductible.

HYATT REGENCY WOODFIELD WELCOMES...

GROUP NAME: International Lutheran Deaf Assn.

FUNCTION NAME: 1995 Convention

DATES: 6/27-7/1/95

RESERVATION DEADLINE: 6/6/95

PREFERRED ROOM RATE(S): \$ \$75.00 Single occupancy
(one person)

CHECK-IN: 3PM \$ \$75.00 Double occupancy
(two persons)

CHECK-OUT: 12 NOON \$ \$75.00 Triple occupancy
(three persons)

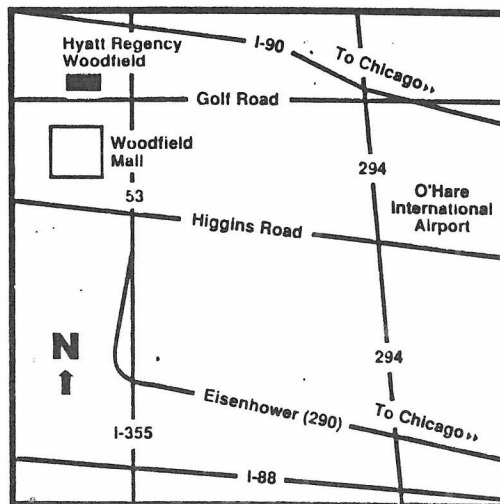
\$ \$75.00 Quad occupancy
(four persons)

**FOR HYATT HOTELS
TOLL FREE RESERVATIONS
CALL 1-800-233-1234**

A block of rooms has been reserved at the Hyatt Regency Woodfield until 6/6/95. Your reservations must be made prior to 6/6/95 and before the group block is filled to assure room accommodations and the preferred rate. Reservations requested beyond 6/6/95 are subject to availability. Rooms may still be available after 6/6/95, but not necessarily at the preferred rate. All reservations are subject to state sales tax and are held only until 6 pm unless guaranteed by credit card, check or money order for one nights room and tax. Reservations not cancelled by 6 pm the day of arrival are subject to a one night room and tax charge. Early check-ins subject to room availability. Bed type provided based on availability at time of arrival. We will make every effort to honor your request, but cannot guarantee bed type.



HYATT REGENCY WOODFIELD
1800 EAST GOLF ROAD
SCHAUMBURG, ILLINOIS 60173
PHONE: (708) 605-1234
FAX: (708) 605-8641



Located in Schaumburg, Illinois at the intersection of Golf Road (I-58) and Interstate 90, just off 53 (I-355). Twenty minutes to/from O'Hare International Airport, thirty five minutes to downtown Chicago.

Transportation by limousine or shuttle to/from O'Hare International Airport call My Chauffeur 1-800-824-5055 to reserve a personalized, on-time pick up (\$15.00 per person each way). Make reservation in advance, upon arrival pick up luggage, then call 1-800-244-6200.

- 400+ luxurious guest rooms.
- 40 spacious suites to choose from.
- Regency club® and Gold Passport®.
- All rooms are sound proof with air-conditioning control, voice mail, video bill review and express check-out, color television, remote control, feature movies.
- Fully handicap accessible.
- Complimentary parking. Avis Rent A Car on premise.
- Complimentary use of our full service health facilities including indoor/outdoor swimming pools, whirlpools and sauna.
- Walking distance to the Woodfield Mall and a variety of affordable restaurants, complimentary shuttle available.
- Adjacent to Walter Payton's popular night club, *Thirty-Fours*.
- 3 minutes from Arlington International Race Track.
- 9-18 hole championship golf courses nearby.
- Enjoy Baguettes, our full-service restaurant overlooking the pool courtyard and Netti's Bar.
- Newsstand, Barbershop and gift shop.



101 North Beaumont Street • St. Louis, Missouri 63103 • (314) 533-6035 (voice or tty)

August 1994

Dear Friends,

Did you know that **more churches and cults in our country seek deaf people to become members than seek any other minority?** Did you know that **95% of all those deaf people continue to be unchurched?** Did you know that **God's Word is not readily available to deaf people in their language**, the American Sign Language (ASL). We know you and your congregation or auxiliary organizations in your church will want to help change the above statistics so more of the **4 million** deaf people who use Sign Language will come to know Jesus as their Savior and live to serve Him!

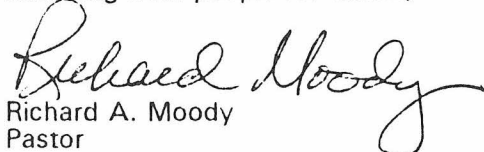
Without regular contact with God's Word, the parable Jesus tells about the sower in Matthew 13 makes it clear why so many deaf people remain unchurched. The seed falling on the path is God's Word coming to deaf people who have never had the scriptures or other materials in their language! If it's not in their language, how can there be understanding? Because most deaf people grow up without a Church, Sunday School or Bible Class program in their language, the seed falling on rocky places is God's Word coming to deaf people who have no foundation and so quickly go astray. As the seed falls among the thorns, so God's Word comes to deaf people who are members of their strong, tight knit, mostly unchurched deaf community who quickly choke God's Word.

Now, Son+Sign Productions at Holy Cross Lutheran Church for the Deaf has a daily devotional program to bring God's Word to the hearts of deaf people in their language. Together, deaf people along with their deaf and hearing family members can participate in the devotions so God's active word can begin, support and encourage faith in their hearts! Additionally, we are in the process of producing a true Sign Language 3-year Lectionary for use in all deaf churches and programs. Also deaf children and their parents need scriptural materials to help build that faith foundation in their hearts. Will you help?

Son+Sign Productions is seeking Annual Sponsors and Corporate Patrons. Our Library members, through their annual donation of \$40, receive **26 video tapes** containing 365 devotions. Because the only way to "write" the American Sign Language is on video tape, a donation large enough to cover the high costs of video production would prohibit the use of our library. However, your donation in any amount helps this library to continue to be available to all deaf people and helps us develop materials for deaf children and their parents!

Please return the enclosed form today, indicating your interest in becoming one of our regular donors. Also, please share this letter to help us spread the word to other members, Sunday School leaders and other organizations in your congregation. Copy the enclosed form and this letter as needed. For more information, please call or write Son+Sign Productions. Thanks for your help, prayers, and interest.

Reaching deaf people for Christ,


Richard A. Moody
Pastor

THANK YOU FROM BRAZIL

(Note: At the last ILDA convention, it was voted to send \$2,500 to the South American country of Brazil to help with two schools for the deaf. This letter is from the one in Recife, which was given \$1,800. There has been no word from the other one in Porto Velho. Read on The Editor)

Dear Sir:

" . . . we communicate that we received the \$1,800 in July which is being used to make changes to part of the roof of our school, repairs to the floor tile in three classrooms, and painting those areas. The funds arrived at a good hour because with the winter rains these repairs were very necessary.

We take this opportunity to send some photos of the students in the classrooms (#1,2 and 3) and student in their homes with families (#4,5,6 and 7). Likewise, we are also giving some subsidy (assistance) to offset some of the poverty of the majority of our students.

This semester we are assigning a teacher for library work, to improve the knowledge of our students and for giving classes to the children's families, to achieve better understanding in the homes between children and their families.

Once again, we wish to thank you for the generous contributions which we received thru you. These are always most useful since we continue to work under great financial difficulties.

Finally, we wish to all the richest blessings in our Lord.

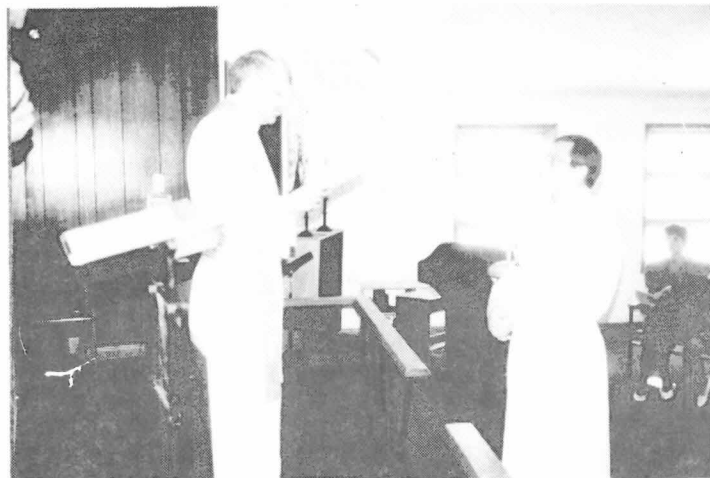
Sincere Greetings,
/S/ SILVIO GIELOW

VICAR ROGER ALTENBERGER BEGINS WORK IN IOWA EAST

Sunday, Aug. 14 saw a large group of church members gather at Word of God Lutheran Church in Cedar Rapids, Iowa as Vicar Roger Altenberger was officially inducted as missionary-at-large for deaf ministry in Iowa District East. The officiant was Rev. Wayne Knolhoff, executive for missions in the district.

Pastor Altenberger succeeds Rev. Michael (Mike) MacDonald who had accepted a call earlier to the Chapel for the Deaf in Charlotte, N.C..

Accompanying Pastor Altenberger to Iowa is his family comprised of his wife, Kim and daughter Kristen, Melissa, Lindsay and Tracey.



READING THE SERVICE OF INSTALLATION—Rev. Wayne Knolhoff, missions executive for Iowa District East, LCMS, officially inducts Vicar Roger Altenberger into service of Iowa East Deaf Ministry. To the far right is Kim Altenberger, the new pastor's wife.

The DEAF LUTHERAN

January-February, 1995

OFFICIAL PUBLICATION OF THE INTERNATIONAL LUTHERAN DEAF ASSOCIATION AND THE BOARD OF MISSION, THE LUTHERAN CHURCH-MISSOURI SYNOD, PUBLISHED BI-MONTHLY BY KERRY HOOPER PRINTING OF GALENA, OH. 3RD CLASS POSTAGES PD. WESTERVILLE, OH. SUBSCRIPTION FEE: INDIVIDUAL . . \$6.00 PER YEAR. CHURCH BLANKET PLAN . . \$5.50 EACH MEMBER PER YEAR.

PLEASE SEND ALL SUBSCRIPTION FEES AND ADDRESS CHANGES TO ELMER FRANCISCO, BUSINESS MANAGER, 10004 EAST MISSION, SPokane, WA 99206-3938.

PLEASE SEND ARTICLES, STORIES AND PICTURES TO LESTER AHL, EDITOR, 1004 CHERYWOOD DR., CEDAR FALLS, IA 50613-1614.

NON-PROFIT ORG.
U.S. POSTAGE PAID
PERMIT
NO. 151
WESTERVILLE, OH.