



The DEAF LUTHERAN



Official Publication of the International Lutheran Deaf Association & the Board for Missions of the Lutheran Church-Missouri Synod

May, 1975

ST. LOUIS, MISSOURI

Volume 67, No. 5

Seminar for Workers Among the Deaf Approved by Wheat Ridge Foundation

Chicago - A \$5,000 grant to help make possible a seminar for training religious workers among the deaf in Washington, D.C. was one of eight new projects approved for funding by the Wheat Ridge Foundation in December.

Between 100-200 participants from Europe, Africa, South America and Asia are expected to attend SETS-Deaf 1975 (the Second Ecumenical Training Seminar on Christian Ministry among the Deaf), to be held following the VIIth World Congress of the Deaf in Washington, D.C. August 9-21, 1975.

A follow-up to an ecumenical seminar held in Geneva in 1971, this second seminar is designed to treat practical aspects of ministry among the deaf. The specific goal will be to produce materials and gain practical experiences which can be used "on the line" for the work of spreading the Gospel to and through deaf people.

The seminar program will be based on "learning by doing." Emphasis will be placed on small group, task-oriented sessions (worship, social justice and communication), with the participants working on specific projects related to the pastoral care and religious education of deaf people.

The Rev. Daniel Pokorny, LC-MS campus pastor among the deaf at Gallaudet College in Washington, D.C., serves as seminar co-chairman, and Dr. Raymond C. Hohenstein, LC-MS pastor emeritus, as Financial Director of SETS-Deaf 1975.

The seven other new domestic and overseas projects approved for support by the Wheat Ridge Foundation in its December meeting included:

--A center for the aged in Hong Kong.

--A special education pilot project for the mentally retarded in the Michigan Dist.

--A community therapy program for alcoholics in Seattle, Washington.

--A church organization and career center in Edmonton, Canada.

--A worker-priest ministry to blue-collar workers in Cincinnati, Ohio.

--A center for the developmentally disabled (adult retarded) at Bethel Lutheran Church, San Francisco.

--A school feasibility study for an inner-city area in Pittsburgh.

In addition to the eight new projects, the Wheat Ridge Board of Directors also approved at their December meeting a special \$5,000 matching fund gift to memorial gifts received from others for Deaconess/Missionary Martha Boss. Miss Boss, who died in an automobile accident in August, 1973, had served as a missionary in China and Hong Kong for 28 years, and had helped start Haven of Hope TB Sanatorium in Hong Kong, one of the first overseas medical projects supported by Wheat Ridge.

The Boss memorial gifts will go toward an endowment fund for the support of a deaconess training program in Hong Kong. The initiation of such a training program was one of Miss Boss' most cherished hopes.

A 1975 program budget totaling \$473,575, was approved by the Wheat Ridge Foundation Board of Directors, with \$197,800 allotted to ongoing medical and community health programs overseas (in India, Nigeria, Hong Kong, New Guinea, Ghana); \$196,775 to ongoing medical, educational and social service programs in the U.S.; and \$79,000 for the new projects at the December meeting.

A deaf-related program in Chicago is one of the social service projects receiving ongoing Wheat Ridge funding in the U.S. A four-year \$35,000 grant was approved by Wheat Ridge in December 1973 to enable Lutheran Child and Family Service of River Forest, Illinois to deploy a social worker trained in sign language to carry out a special ministry among the deaf. The primary goals of the project include:

(please turn to page 7)

A Letter from the Philippines

Ili Norte, San Juan, La Union
Republic of the Philippines
January 17, 1975

The Rev. Herbert W. Rohe
Secretary for Ministry to the Deaf
Board for Mission, LC-MS

Dear Brother Rohe:

Your statement on my visit in Albany long ago triggered many fond memories of those years spent in roaming around during the depression years in the north middle states - much of the time in Minnesota - with the Drevelows, the Heynes in Long Prairie, Alexandria, Emmaus Camp in Menasha and Detroit Lakes. I did much fishing then. By the way, one of my daughters is now a resident in the Twin Cities. She's the wife of the former soldier son of Rev. Schmiede of Eli, Minnesota. We have an invitation to fish in one of the lakes there this summer!

I am pleased to know that LC-MS folks, as usual, lead in looking after the "dehumanized" members of the human family. In the Third World, you know, where the love of God in Christ is not known and where superstitious beliefs give a sad brand upon the unfortunates as being bedeviled or punished and forsaken by God, handicapped people including the deaf and the dumb become tragic burdens to relatives. They are ignored or neglected and, too, often, treated meanly. There is hardly any public institution that cares for them and hardly any association that espouses their cause. This is true even in a Catholic country such as the Philippines. The poor deaf-mutes and blind, the deformed and mentally retarded are hidden from view because of the stigma suffered by the members of the family. Not a few are tied to posts so that they would not wander away.

What I have tried to do is help the handicapped in general and it did happen that a few of the handicapped given some training in bamboo craft are deaf-mutes. There is no doubt that a percentage of the population suffer from lack of normal hearing and not a few are stone-deaf. These and their relatives consider their situation a tragic misfortune - a form of divine judgement. In shame they hide the handicapped and give them less than the loving care they especially deserve. It goes without saying that we as missionaries, we cannot do justice to our commitment to bring God's love in Christ to people without being sensitive to the "dehumanized" folks such as the deaf and the muted, the blind

(please turn to page 7)

Lutheran Deaf Mission Staff

Rev. Herbert W. Rohe, Secretary for Ministry to the Deaf
500 N. Broadway, St. Louis, Mo. 63102 314-231-6969

Full-Time Pastors

Rev. Fred H. Allen, 8448 S. Indiana Ave., Chicago, Ill. 60619 (312) 994-5697
Rev. Orlin S. Anderson, 104 Finley St., Jacksonville, Ill. 62650 (217) 243-2528
Rev. Clark R. Bailey, 4911 Anna St., Warren, Mich. 48092 (313) 751-5823
Rev. Robert A. Bauer, 5808 113 B St., Edmonton, Alta., Can. (403) 434-1671
Rev. Robert G. Blakely, 6922 Hyde Park Dr., Dallas, Tex. 75231 (214) 341-2216
Rev. Walter Busby, 220 San Marco, St. Augustine, Fla. 32084 (904) 829-6743
Rev. David Leroy Carstens, R. 2, Box 587E, Connellys Springs, N. C. 28612 (704) 397-5152
Rev. Robert M. Corl Jr., 1929 Huxley St., Madison, Wis. 53704 (608) 249-8076
Rev. Paul Dorr, 2416 N. Grant Blvd., Milwaukee, Wis. 53210
Rev. A. E. Ferber, 246 East 74th Terr., Kansas City, Mo. 64114 (816) 363-3596
Rev. Theodore Frederking, 9902 N. 5th Ave., Phoenix, Ariz. 85021 (602) 944-1911
Rev. F. P. Gehrs, 7441 113th St., Delta, B. C., Canada V4C 5B2 (604) 594-2918
Rev. G. A. Gehrs Jr., 6262 Soledad, Riverside, Calif. 92504 (714) 689-8380
Rev. C. Roland Gerhold, 510 Parkers St., Newark, N. J. 07104 (201) 485-2260
Rev. Larry Guenzel, 1530 Creek St., Rochester, N. Y. 14625 (716) 671-5944
Rev. Francis G. Gyle, 6129 Shirley St., Halifax, N. S., Canada
Rev. Don Haug, 4388 Harvest Lane, Houston, Tex. 77004 (713) 529-5567
Rev. August Hauptman, 3476 Drummond Rd., Toledo, Ohio 43606 (419) 472-5586
Rev. Martin Hewitt, 6301 Alamo, St. Louis, Mo. 63105 (314) 725-8349
Rev. Daniel Hodgson, 59 Maxwell Rd., Garden City, N. Y. 11530 (516) 248-2357
Rev. Louis R. Jasper, 32 Oxford Road, 1st floor, Kowloon Tong, Hong Kong 859687
Rev. A. T. Jonas, 1207 S. Vermont Ave., Los Angeles, Calif. 90006 (213) 737-3963
Rev. Charles Jones, 47 Elm St., Foxboro, Mass. 02035 (617) 543-8891
Rev. Martin Kosche, 116 Walnut St., Delavan, Wis. 53115 (414) 728-5980
Rev. W. H. Lange, 5070 Lake St., Omaha, Nebr. 68104 (402) 558-5672
Rev. Donald Leber, 4787 Scheibler Rd., Memphis, Tenn. 38128 (901) 386-3130
Rev. Roger Leonhardt, 308 E. 14th St., Devils Lake, N. Dak. 58301 (701) 662-3267
Rev. William Ludwig, 6547 46th Ave. N. E., Seattle, Wash. 98115 (206) 524-2283
Rev. Robert Muller, 5301 42nd Ave., Hyattsville, Md. 20781 (301) 864-2061
Rev. Jerold Munz, 1575 Street Rd., Apt. D-99, Warminster, Pa. 18974 (215) 674-3474
Rev. W. O. Neisch, 5049 Wishingwell Dr., Flint, Mich. 48507 (313) 694-5944
Rev. John Nickerson, 903 No. Golf Cul-de-Sac, Des Plaines, Ill. 60016 (312) 824-1446
Rev. Ervin Oermann, 1431 NW 202 St., Miami, Fla. 33169 (305) 653-2349
Rev. Marlow Olson, 4928 Guilford Ave., Indianapolis, Ind. 46205 (317) 283-1351
Rev. Allan Page, 841 16th St. S. E., Cedar Rapids, Iowa 52403 (319) 362-6528
Rev. Daniel Pokorny, 4703 Montgomery Pl., Beltsville, Md. 20705 (301) 937-2704
Rev. Myron Prok, 2085 Wascana Ave., Lakewood, Ohio 44107 (216) 228-0776
Rev. Richard Reinap, 3808 11th Ave. S., Minneapolis, Minn. 55407 (612) 824-8968
Rev. George C. Ring, 3919 E. 42 St., Des Moines, Iowa 50317 (515) 265-6987
Rev. Robert C. Rowland, 219 Meadowbrook Drive, Bloomington, Ill. 61701 (309) 663-5772
Rev. Martin Sampson, 5505 Diamond Heights, San Francisco, Calif. 94131 (415) 589-1246
Rev. Kenneth E. Schnepf, Jr., 546 W. 153rd Street New York, N. Y. 10031 (212) 926-9078
Rev. Bruce Stam, 2920 Gilmore, Pittsburgh, Pa. 15221 Ph. Church: (412) 731-2550
Rev. Walter D. Uhlig, M. A., M. S. T. 3807 Gillham Road, Kansas City, Mo. 64111 (816) 561-9030
Rev. George Winkler, W. 3614 Wellesley, Spokane, Wash. 99205 (509) 326-3227
Rev. Donald Winkler, 469 Park Overlook, Worthington, Ohio 43085 (614) 846-8942
Rev. Donald Zuhn, Rt. 8, Box 99, Brainerd, Minn. 56401

Part-Time Pastors

Rev. Wayne Bottlinger, 4768 Neville St., South Burnaby, B. C. Canada
Rev. Robert Bremer, S. Carolina School for the Deaf and the Blind, Spartanburg, S. C.
Rev. Russell Johnson, 1203 Linda Dr., Valdosta, Ga. 31601 (912) 244-7482 (414) 445-7231
Rev. George Natonick, 2417 N. E. Ainsworth, Portland, Oregon 97211
Rev. Delbert Thies, 3802 N. 48th St., Omaha, Nebr. 68104 (402) 453-8832
Rev. Frank Wagenknecht, 1625 Woodridge Dr., Clearwater, Fla. 33516 (813) 581-5414

Lay Ministers

Mr. Gilbert Berninghaus, 2511 N. 51st St., Omaha, Nebr. 68104 (402) 558-2487
Mr. Alex Brodie, Apt. 214, 1400 E. 11th Ave., Vancouver 12, B. C., Canada (604) 879-8148
Mr. Robert D. Case, 1511 Cranford, Memphis, Tenn. 38117 (901) 682-0832
Mr. Don Fairman, 3726 Fifth Ave. N., Great Falls, Mont. 59401 (406) 452-2382
Mr. Richard E. French, 4324 S. W. Willow, Seattle, Wash. 98136 (206) 935-2920
Mr. Robert Oettel, 2115 Brown Road, Lakewood, Ohio 44107 (216) 221-7908
Mr. George Perry, 6002 Beaumont Drive, Fort Wayne, Indiana 46825
Mr. Marion J. Van Manen, 1632 Hollenbeck Rd. No. 3, Sunnyvale, Calif. 94087 (408) 735-8825 (414) 728-6584 (403) 282-7718
Mr. Wilhelm Wegner, 502 E. Washington St., Delavan, Wis. 53115
Mr. Harold Ziprick, 4328 Morley Trail, Calgary 48, Alta., Can. (403) 282-7718

Parish Workers

Miss Ruth Fangmeier, 1902 N. Dayton St., Chicago, Ill. 60614 home (312) 953-8852
Lutheran Family Service of Ill., 59 E. Van Buren St., Chicago, Ill. 60605 office TTY (312) 939-0930
Miss Carol Hedensten, 1280 Marshall No. 3, St. Paul, Minn. 55104 (612) 646-1195
Deaconess Grace Jewett-Baranski, 1041 N. Long Ave., Chicago, Ill. 60651 MCM (312) 921-2734 (414) 344-4786
Mrs. Doris Myhre, 955 N. 34th St., Milwaukee, Wis. 53208

Vicars

Mr. Fred Anson, 41-01 75th St., Elmhurst, L. I., New York 11373
Mr. Ron Friedrich, 1638 Faxon Ave., Memphis, Tenn. 38112
Mr. Larry Larsen, Clearwater, Florida
Mr. K. Omahr Mork 1333 N St., N. W. Washington, D. C. TTY (202) 265-1168

Retired Pastors

Pastor John A. Beyer, 10549 20th Ave., N. E., Seattle, Wash. 98125
Rev. N. Borchardt, 11719 Evanston Ave., Detroit, Mich. 48213
Rev. R. Cordes, Sr., 1010 Lafond Ave., Apt. 9, St. Paul, Minn. 55104
Rev. W. Ferber, 617 14th St. So., Fargo, N. D. 58102
Rev. A. Ferber, 246 E. 74 Terrace, Kansas City, Mo. 64114
Rev. M. E. Mueller, 2670 N. 46th St., Milwaukee, Wisc. 53216
Rev. E. Scheibert, 10941 Wellington Ave., Melrose Park, Ill. 60146
Rev. W. Westermann, P. O. Box 27, Walkerton, Va. 23117

Part-Time Pastors: Central Pennsylvania Synod

Rev. Kendig W. Bergstresser, 2501 Thomas St., Harrisburg, Pa., 17103 * (717) 238-7085
Rev. Preston Dumas, 219 Plum St., Williamsburg, Pa., 16693 (814) 832-2095
Rev. J. Richard Eckert, 314 S. 31st St., Harrisburg, Pa. 17109 (717) 545-1612 TTY (717) 232-7716 (814) 943-8258
Rev. Walter J. Emswiler, 1110 7th Ave., Altoona, Pa. 16602 (215) 777-6421
Rev. Walter H. Guigley, 501 Lawrence Ave., Lincoln Park, Reading, Pa. 19609 (717) 569-1245 (717) 524-7575 (717) 652-1852 (215) 965-9443 (717) 225-4926
Rev. William A. Hower, 700 Pleasure Rd., Lancaster, Pa. 17601
Rev. Robert J. Johnson, 120 South Third St., Lewisburg, Pa. 17837
Rev. Richard C. Jones, 900 S. Arlington Ave., Harrisburg, Pa. 17109
Rev. James Koones, R. D. 2, Coopersburg, Pa. 18036
Rev. Larry A. McConnell, 401 Spring Forge Dr., Spring Grove, Pa. 17362
Lay Worker, Mr. Donald R. Gallion, 5501 Ridgeview Dr., Harrisburg, Pa. 17112 (717) 652-6847

* TTY same number.

Ephphatha Services, ALC

Rev. S. Simonson, P. O. Box 713, Sioux Falls, SD 57101 (605) 339-0066
Rev. Ing. Thvedt, 8701 Old Spanish Trail, Tucson, AZ 85710
Rev. L. T. Bunde, 3711 47th Ave. S., Minneapolis, MN 55406 (612) 729-0442
Rev. G. Long, 15 N. E. 6th Ave., Faribault, MN 55021 (507) 334-3529

Lutheran Schools for the Deaf

Detroit School for the Deaf, Rev. Rodney Rynearson, Director
6861 E. Nevada, Detroit, Michigan 48234
Mill Neck School for the Deaf, Dr. Herbert Arkebauer, Headmaster
P. O. Box 12, Mill Neck, New York 11765

For Change Of Address

Be sure to include your old address label stuck on the front of this issue, and send this clipping to:

Russell Healey, Business Manager
4112 Cleveland Avenue
St. Louis, Missouri, 63110

NEW ADDRESS:

Name
Address
City State Zip

The DEAF LUTHERAN

May, 1975, Vol. 67, No. 4

Official Publication of the International Lutheran Deaf Association & the Board for Missions of the Lutheran Church-Missouri Synod. Published monthly by Concordia Publishing House, St. Louis, Mo., 63118. Subscription Price \$3.00 per year. Second-class postage paid at St. Louis, Missouri.

The Deaf Lutheran goes to press the 15th of the month, two weeks before issue. Send all news, pictures, stories, and articles as soon as ready, at least three weeks before issue, to the Editor.

The DEAF LUTHERAN

Archie D. Marshall, Editor
3743 Palm Street
St. Louis, Missouri 63107

International Lutheran Deaf Association

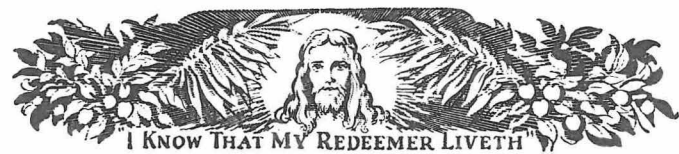
President — Elmer Francisco, 10004 East Mission, Spokane, Wash. 99206
Secretary — Archie Marshall, 3743 Palm St., St. Louis, Mo. 63107
Treasurer — Robert D. Case, 1511 Cranford, Memphis, Tenn. 38117 (901) 682-0832
Pastoral Advisor — Rev. Rodney Rynearson, 7400 Stockton Ave., Detroit, Michigan 48234
ILDA Vice-Presidents (Regions)
Central — Mr. Joseph Kindred, 1439 Udell St., Indianapolis, Ind. 46223
Dixie — Herman Spencer, 311 Third Ave., N. W., Conover, N. C. 28612
Eastern — Mr. Edward A. Trainor Sr., P. O. Box 1283, Landover, Md. 20785
Great Lakes — Mr. Clarence Schulz, 27212 El Capitan Dr., Warren, Mich. 48092
Midwest — Dale Paden, 1680 Whitmore, Omaha, Nebr. 68112
Northwest — Bob Kosanovich, 1405 67th Ave. E., Tacoma, Wash. 98424
Pacific — Harold Thuve, 3218 W. 153d St., Gardena, Calif. 90249
Regional Advisers
Central — Rev. Martin Hewitt, 6301 Alamo Ave., St. Louis, Mo. 63105
Dixie — Rev. Donald Leber, 4787 Scheibler Rd., Memphis, Tenn. 38128
Eastern — Rev. Daniel Hodgson, 59 Maxwell Rd., Garden City, N. Y. 11530
Great Lakes — Rev. Myron Prok, 2085 Wascana Ave., Lakewood, Ohio 44107
Midwest — Rev. Walter Uhlig, 605 S. Churchill Ave., Sioux Falls, S. Dak. 57103
Northwest — Rev. William Ludwig, 6547 46th Ave. N. E., Seattle, Wash. 98115
Pacific — Rev. Marlin Sampson, 5505 Diamond Heights, San Francisco, Calif. 94131

Roster of staff with teletypewriter (TTY) units:

Rev. Fred H. Allen, Chicago, Ill. (312) 994-5697 (TV phone)
Rev. Orlin S. Anderson, Jacksonville, Ill. (217) 243-2528
Deaconess Grace Jewett-Baranski, Chicago, Ill. (312) 921-2734
Rev. Robert Bauer, Edmonton, Alta., Can. (403) 435-7788
Rev. Robert C. Blakely, Dallas, Tex. (214) 341-2216
Mr. Alex Brodie, Vancouver, B. C., Can. (604) 879-8148
Mr. Robert D. Case, Memphis, Tenn. (901) 682-0832
Rev. Robert M. Corl Jr., Madison, Wis. (608) 249-8076
Mr. Richard E. French, Seattle, Wash. (206) 935-2920
Rev. F. P. Gehrs, Vancouver, Can. (604) 594-2918
Rev. C. Roland Gerhold, Newark, N. J. (201) 485-2261
Rev. Larry Guenzel, Rochester, N. Y. (716) 671-5944
Rev. Martin Hewitt, St. Louis, Mo. (314) 725-8349
Rev. Daniel Hodgson, Garden City, N. Y. (516) 248-2357
Rev. Martin G. Kosche, Delavan, Wis. (414) 728-5980
Rev. Donald Leber, Memphis, Tenn. (901) 386-3130
Rev. Robert Muller, Hyattsville, Md. (301) 864-2119
Rev. George Natonick, Portland, Oreg. (503) 281-4480
Rev. John Nickerson, Chicago, Ill. (312) 824-1446
Mr. Robert Oettel, Chicago, Ill. (312) 261-1851 (MCM unit)
Rev. Ervin Oermann, Miami, Fla. (305) 653-2349
Rev. Allan Page, Cedar Rapids, Ia. (319) 362-6528
Rev. Daniel Pokorny, Beltsville, Md. (301) 937-2704
Rev. Richard Reinap, St. Paul, Minn. (612) 824-8968
Rev. Robert C. Rowland, Bloomington, Ill. (309) 663-5772
Rev. Kenneth E. Schnepf, Jr., New York, N. Y. (212) 926-9078
Rev. Walter Uhlig, Sioux Falls, S. Dak. (605) 336-9481
Mr. Marion J. Van Manen, Sunnyvale, Calif. (408) 735-8825
Rev. Frank Wagenknecht, Clearwater, Fla. (813) 531-2761
Rev. Donald C. Winkler, Worthington, Ohio (614) 885-3362
Rev. George Winkler, Spokane, Wash. (509) 326-9052
Rev. Donald W. Zuhn, Aurora, Colorado (303) 366-7748

Churches with TTY units:

Chicago, Ill., Ephphatha (312) 723-3232 (MCM unit)
Dallas, Tex., (214) 368-1371
D-lavan, Wis., Holy Cross (414) 728-5980
Elmhurst, N. Y., St. Matthew (212) 335-8141
Jacksonville, Ill., Christ (217) 243-2528
Memphis, Tenn., Eternal Mercy (901) 274-2727
Milwaukee, Wis., Emmanuel (414) 871-2700
Newark, N. J., St. Matthew (201) 485-2261
N. Miami, Fla., Deaf Zion (305) 688-0312
Pittsburgh, Pa., Trinity (412) 731-2550
St. Louis, Mo., Holy Cross (314) 533-6035
St. Paul, Minn., Prince of Peace (612) 644-2365
Sunnyvale, Calif., (408) 736-9216
Vancouver, B. C., Can., Trinity (604) 433-8612
Warminster, Pa., (215) 674-3474
Worthington, Ohio, (614) 885-3362



LIVING WITH CHRIST
...AFTER EASTER

Easter seems so long ago. The greatest day in the life of the church is past. Days have turned to weeks. Worrying about the future leaves us little time for experiencing the joy and new life of the Resurrection.

We are all back to work or school. To family squabbles and weekly grocery bills. To war and starvation in an unstable world. To the discouragement that we experience while watching our Christian brothers fighting each other.

What happened to Easter in all this? Where is the Risen Lord? In the midst of division and drudgery, how can we stay alive - really alive in God's mission? . . .

What is good about the Good News of Easter is that it goes on. The Resurrection of Jesus Christ is not just another story which becomes past history when Walter Cronkite says good night.

The Good News of Easter is that Jesus lives! He lives today. In His church. Among His people.

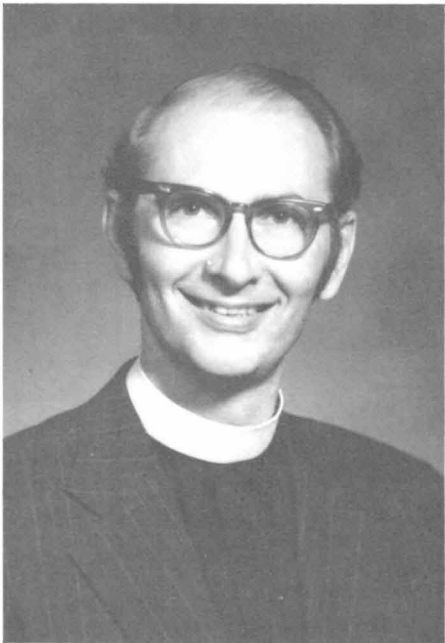
As the Gospel is preached, . . . as we celebrate Baptism and Holy Communion, . . . as Christians talk and work together, . . . the Risen Lord is present with God's love and forgiveness.

This Risen Lord gives all of us the strength and joy to work for peace and healing, justice and commitment in our families, our congregations, and our Synod.

The way to live with Jesus Christ after Easter is to live with Him who is alive among us now. The Risen Lord is bringing new power and meaning to our lives. Yes, HE LIVES! AND WE ARE ALIVE!

"I KNOW THAT MY REDEEMER LIVETH"
They asked me how I know it's true
That the Savior lived and died. . .
And if I believe the story
That the Lord was crucified?
And I have so many answers
To prove His Holy Being,
Answers that are everywhere
Within the realm of seeing. . .
The leaves that fell at Autumn
And were buried in the sod
Now budding on the tree boughs
To lift their arms to God. . .
The flowers that were covered
And entombed beneath the snow
Pushing through the "darkness"
To bid the Spring "hello". . .
On every side Great Nature
Retells the Easter Story- -
So who am I to question
"The Resurrection Glory."
--Helen Steiner Rice

"PLEASE, SOMEBODY HELP ME
FIND MY FATHER!"



Rev. Alvin Barry

A little boy in a vacation city in Colorado became so excited with the novelties and shoppes along the street that he completely forgot about his family as he wandered along. The family also forgot him. When he discovered that he was lost, he began crying to everyone on the street "Please, somebody help me find my father!" Many people ignored him and turned away.

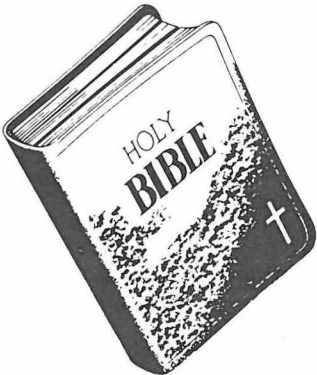
In a similar way, there are many of God's children on this earth lost and in search of their Father, God. They are "without hope and without God in the world." They are saying to you and me "Please help me find my Father." We cannot ignore their pleas. You and I have the blessed news and privilege of leading these people to Christ and his precious Good News, "God was in Christ reconciling the world to Himself." Only through Christ and his precious Gospel can we come to know our true Father in heaven. God reveals Himself to us in the love of Christ.

It is our chief task as Christ's people to spread His Good News and satisfy the longing and the pleas of the world's lost souls "Please, help me find my Father."

This is, in summary, what Rev. Alvin Barry said to the people who assembled for his installation as Executive Secretary of the Board for Missions on March 3, 1975 at Concordia Seminary in St. Louis.

Rev. Barry is a 1956 graduate of Wisconsin Lutheran Seminary at Thiensville, Wisconsin, received the Master of Sacred Theology degree from Luther Theological Seminary, St. Paul, Minnesota, and also attended Concordia Theological Seminary, Springfield, Illinois. Following his ordination in 1956, he spent 11 years serving parishes at Minneapolis, Claremont, and Trimont, Minn. In February 1967 he accepted the call as Missions and Stewardship Counselor for the Iowa District West.
(please turn to page 7)

DAILY BIBLE READING GUIDE



Bible
Reading
for May 1975

HELP CLOSE AT HAND

- 1 Isaiah 52:7-9....
- 2 Hebrews 12:1-4...
- 3 Revelation 21:1-4.

FRESH STRENGTH

- 4 Sunday.. John 14:15-19....
- 5 Acts 8:4-8.....
- 6 Rev. 21:9-12.....
- 7 Deut. 8:1-3.....
- 8 Ephesians 1:18-21.
- 9 1 Kings 8:1-3....
- 10 James 1:2-8.....

CONTINUING LOVE

- 11 Sunday. John 17:9-12.....
- 12 Acts 1:6-9.....
- 13 II Kings 2:9-12..
- 14 Isaiah 25:6-8....
- 15 John 3:14-17....
- 16 Rev. 19:7-10....
- 17 Romans 8:14-17...

FLAME OF THE SPIRIT

- 18 Sunday. Acts 2:1-4.....
- 19 Joel 2:28-29.....
- 20 Genesis 11:5-9...
- 21 Acts 5:14-16.....
- 22 I Corint. 12:1-3..
- 23 I Corint. 12:4-8..
- 24 I Corint. 12:9-11.

GOD'S FAITHFULNESS

- 25 Sunday. Romans 5:1-5....
- 26 Genesis 1:26-28..
- 27 Isaiah 6:1-4.....
- 28 Numbers 20:6-9...
- 29 Zechariah 8:7-9..
- 30 Psalm 29:1-4.....
- 31 Numbers 6:22-27..

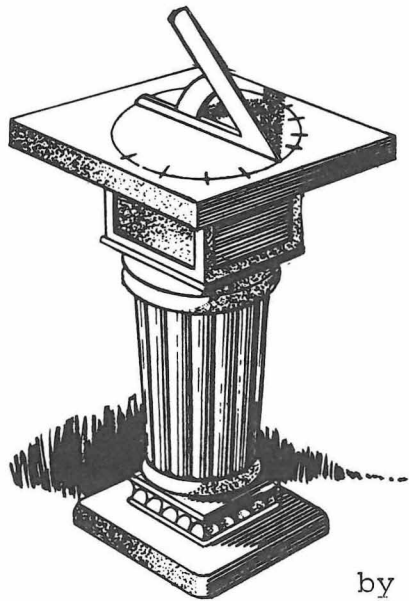


A SMILE is a curve that
can set a lot of things
straight.

ILDA



PAGE



*ILDA
is
NOW!*

by Rev. Herbert W. Rohe

Time is running out! Tomorrow it will be too late! What if Christ had said, "I know I can save the world - but not today - I am only thirty years old - wait until I am forty - I'll do it tomorrow." If He had thought or spoken so, it may never have been done. He had to do it now by God's calendar, and He did it. That's how you and I were saved.

I know that many of you have been reading about and thinking about joining ILDA. You have every good intention of doing so. But you have not done it. Time is fast slipping by! ILDA needs you today! Tomorrow may be too late. ILDA has a great future, but it needs YOU and it needs YOU NOW. "Time and the tide wait for no man!"

ILDA is people. It is YOU. Without YOU and YOU and YOU, ILDA cannot exist. Without YOU, ILDA cannot fulfill the tasks it has set to accomplish. In other words, ILDA is for YOU! It both serves YOU and needs YOU for service.

ILDA is your witness, your ministry. What you can't do alone, you can do together. Together 2,000 members (less than half our total Lutheran deaf membership) can tell the world we are active in our church, loyal to the Gospel of Jesus Christ and His Good News. Already over 500 visitors from overseas are registered to be in D.C. for the World Congress. They will be watching to see your witness.

ILDA is one of the ways in which Christ calls us to His service. He says, "Where two or three are gathered together in My name, there am I in the midst of them." He will be there on July 31st when ILDA meets in D.C.

"The Gospel of this Kingdom must be preached as a witness to all nations," was the heart's desire of Christ in His last days here on earth. This is His heart's desire today. He counts on all of His people to rise to this task. ILDA was formed to help you fulfill this task. By supporting ILDA you help it help you to fulfill your task.

Clip out the application at the lower right corner of this page, fill it in with the necessary information, then send it with the \$2.00 membership fee to our Program and Finance Director, Mr. Edward A. Trainor now, today -- not tomorrow. Tomorrow has a way of slipping by today into tomorrow, then the day after tomorrow into tomorrow and tomorrow and tomorrow....until finally it is forgotten and by then it is probably too late!

Remember that good deeds speak louder than words. Our ILDA "LIGHT" is not worth much unless it can be seen. Lamps do not talk, they shine! A lighthouse sounds no drums, it beats no gongs; far out over the waters its friendly spark is seen by the mariner. So, let our actions shine like a beacon in this important ILDA year ahead.
The Editor.

THAT BEAUTIFUL CONSTITUTION

The beautiful copy of the constitution that came to you in the March issue of The Deaf Lutheran was the production of Universal Match Corporation for whom our editor, Archie D. Marshall has worked for 26 years as a designer of match book covers. We are deeply grateful to Archie's boss Mr. Russell Fahning, Graphic Arts Director, who gave us a substantial reduction in the cost of the 14 photostats which it took to reduce and produce the ILDA constitution.

OFFICIAL ILDA PROGRAM ORDER APPLICATION

Editor: Please send me _____ copies of THE OFFICIAL ILDA PROGRAM magazine as soon as possible. I am enclosing a check or money order in the amount of \$1.75 for each copy ordered.

PLEASE SEND MY COPIES TO:

NAME _____
STREET _____
CITY _____ STATE _____ ZIP _____

Make Checks or Money Orders Payable to:
The 1975 Convention Committee. Mail Coupon
with Checks or Money Orders to:

1975 Convention Committee
Program Editor
P.O. Box 247
Riverdale, Md. 20840

IT IS NEVER TOO SOON TO JOIN THE ILDA.....

Rejoice with us in Christ's love...Join Today

ILDA Membership Application

Type

(Check One)

Fill in your name and address on the spaces below. Use as many names and addresses as desired. Clip and mail to:
Edward A. Trainor Sr., P.O.Box 247,
Riverdale, Maryland 20840.

Make checks or money orders payable to:
ILDA Program & Finance Director.
Do Not Send Cash. Enclose \$2 per name.

	1--Active.....	2--Associate.....	3--Sustaining.....
NAME _____	<input type="checkbox"/>	<input type="checkbox"/>	<input type="checkbox"/>
Address _____	<input type="checkbox"/>	<input type="checkbox"/>	<input type="checkbox"/>
City _____ State _____ Zip _____	<input type="checkbox"/>	<input type="checkbox"/>	<input type="checkbox"/>
NAME _____	<input type="checkbox"/>	<input type="checkbox"/>	<input type="checkbox"/>
Address _____	<input type="checkbox"/>	<input type="checkbox"/>	<input type="checkbox"/>
City _____ State _____ Zip _____	<input type="checkbox"/>	<input type="checkbox"/>	<input type="checkbox"/>
NAME _____	<input type="checkbox"/>	<input type="checkbox"/>	<input type="checkbox"/>
Address _____	<input type="checkbox"/>	<input type="checkbox"/>	<input type="checkbox"/>
City _____ State _____ Zip _____	<input type="checkbox"/>	<input type="checkbox"/>	<input type="checkbox"/>

(Please Type or Print Plainly)



Plan Now to Attend
The Third Biennial Convention of the

INTERNATIONAL LUTHERAN DEAF ASSOCIATION

WASHINGTON, D. C. JULY 31 - AUGUST 3, 1975

To be Held at the Beautiful, New



NATIONAL
CENTER INN

ARLINGTON, VA. (A Stone's throw from D.C.)

* * BEAUTIFUL STOUFFER'S FEATURES: * *
+ 24-Hour Coffee Shop + Elaborate
Restaurant + Cocktail Lounge with Live
Entertainment + Roof-Top Swimming Pool
+ Suanas + Gift Shop and Car Rental in
Lobby + Free Limousine Service to and
From the Airport.

FANTASTIC LOW RATES DURING THIS TIME OF
INFLATION JUST FOR YOU!

+ \$21.00 Per Night Single + \$25.00 Per
Night Double + Cots Available at
\$5.00 Extra Per Night

(Guests provide their own meals which
are available at the hotel and many
nearby restaurants and cafes at prices
everyone can afford.)

This is an event that all deaf Lutheran
people should mark down a "MUST" in
their 1975 vacation plans. The ILDA
needs YOU! As a deaf lay person you
owe it to Christ and your deaf brothers
and sisters to attend. Let us all make
this an historic event for the glory of
our Lord and the enrichment of Chris-
tian spiritual growth among all our
brothers and sisters!

REGISTRATION LIMITED TO 700 AT THE MOST
SO BE EARLY IN SENDING IN YOUR APPLI-
CATION ON THE RIGHT SIDE OF THIS PAGE.
FIRST COME, FIRST SERVED STRICTLY
ADHERED TO!

FOR ADDITIONAL INFORMATION,
APPLICATIONS AND HOTEL BROCHURE, WRITE:

1975 ILDA Convention Committee
Registration Chairman
P.O. Box 247, Riverdale, Md. 20840

★ CHANCEL DRAMAS

- + Cash Prizes
- + Plaque and Certificate Awards

★ RELIGIOUS WORKSHOP DISPLAYS

- + Congregation Participation
- + Plaque and Certificate Awards

★ INSPIRING EVENTS

- + Devotional Services
- + Religious Activities

★ TRADITIONAL SUNDAY WORSHIP

- + Awe-Inspiring Service
- + The Lord's Supper

★ OPENING DAY BUFFET

- + Served in the Lounge
- + Live Entertainment

★ GUIDED TOURS

- + Mt. Vernon, Wash. D.C., Gallaudet
- + Interpreted in Sign Language

★ EXCITING BANQUET

- + Fabulous Meal
- + Speakers, Entertainment, Awards

★ PRECEDES WORLD FEDERATION OF THE DEAF

- + Stay Longer, Attend Both
- + A Real Vacation Opportunity

*
* HOST CONGREGATIONS + + + LUTHERAN CHURCHES OF THE DEAF *
*
* * Christ Lutheran Church, Washington, D.C. *
* * St. Marks Lutheran Church, Baltimore, Maryland *
*

FILL OUT THIS APPLICATION AND MAIL TO....1975 ILDA CONVENTION COMMITTEE
Registration Chairman...P.O.Box 247....Riverdale, Maryland 20840

(A Deposit of \$25.00 per person must be made to hold a room for you.
Payment in full is due June 1, 1975. No refunds after July 1, 1975)

Ms. _____ Date _____
Mr. _____
Rev. _____ No. in Group _____
Last Name First Name
Arrival Date _____
street city state zip
roommate if not spouse

ACCOMMODATIONS DESIRED:

Single...\$21.00 Per Night Double...\$25.00 Per Night
Cots.....\$ 5.00 Each No. Wanted
I want these accommodations for Thursday Friday Saturday Other
(Check the days you plan to attend the convention.)
(All prices subject to 6% tax on accommodations.)

EVENTS COST PER PERSON....CHECK THOSE DESIRED

☐ Registration.....\$7.00 (Mandatory) ☐ Official ILDA Program....\$ 1.50
☐ Opening Buffet...\$3.75 ☐ Banquet Saturday.....\$ 15.00
☐ Guided Tour Friday to Mt. Vernon (Washington's Home)..... 4.50
☐ Guided Tour Saturday of Wash., D.C. and Gallaudet College..... 4.50
TOTAL FOR ALL EVENTS.....\$ 36.25
SAVE \$6.25! BUY A COMBINATION TICKET!
Combination Ticket (Includes all events).....\$ 30.00

☐ I am enclosing a deposit in the amount of \$ _____ towards my accomma-
dations and the events I have checked, Bill me for the balance which I will
pay in full on or before June 1, 1975.

☐ I am enclosing payment in full plus 6% tax on hotel accommodations.

SEND ONLY CERTIFIED CHECKS OR MONEY ORDERS PAYABLE TO: 1975 ILDA Convention
Committee. WE ABSOLUTELY CANNOT BE RESPONSIBLE FOR CASH THAT IS SENT IN
THE MAIL!

TOTAL AMOUNT ENCLOSED \$ _____



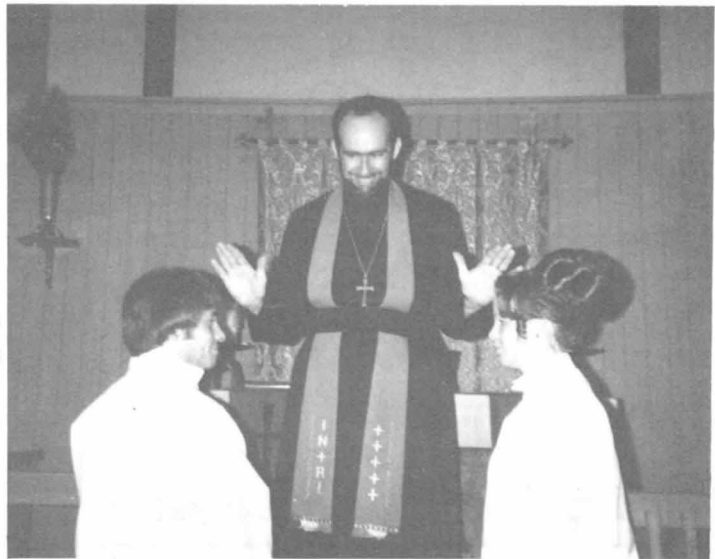
Saginaw, Mich. (Holy Cross).. A surprise birthday party planned for Herman Budzier of Saginaw, Michigan, by his friends at Holy Cross Deaf Lutheran Church, had to be postponed two weeks when he couldn't attend for reasons of health. A beautifully decorated cake kept fine in a friend's freezer. Sixty years a confirmed Lutheran and a child of God by baptism fifteen years before that means the 75 yr. old gentleman has enjoyed many of God's blessings. A happy glow of joy radiates when Budzier mentions his being a life-long Lutheran. He still likes to come to church for Holy Communion when health and weather permit; when not, Pastor W.O. Neisch of the Mid-Michigan Field serves him privately in the chapel of the nursing home.

WORLD
HUNGER
TOTAL MOUNT

Lutheran churches have collected more than four million dollars to fight world hunger through ongoing relief operations and special appeals last year as international famine became a special concern for many denominations. The ALC has already raised \$1,400,000 and contributions are heading towards the two million dollar mark. The Lutheran Church in America received one million dollars in contributions during the month of December, making the total \$1,875,796 for 1974 efforts of the Love Compels Action appeal and world hunger campaign. The Lutheran Church-Missouri Synod has raised about \$1,075,000 through its regular world relief budget of \$675,000 and a special hunger appeal, according to the Rev. Melvin Witt secretary of world relief. Funds totaling \$14,500 raised through the sale of Christmas cards by Evangelical Lutheran in Mission (ELIM) were given to the LCMS world hunger drive.



* Mr. and Mrs. Danny Nichols were confirmed as members of Eternal Mercy Lutheran Church for the Deaf, Memphis, Tennessee, on Palm Sunday, March 23, 1975. They received a beautiful picture of the hands of God coming out of the clouds as a confirmation gift from the congregation. Mrs. Shari Nichols plays the organ for church services, helps teach Sunday School, and is the part-time Church Secy. Mr. Danny Nichols also helps to teach the teenage Bible Class and is very active in the sports program of the congregation.



* They both will be great assets to the life of the congregation.

Mrs. Earl Cash was in charge of the Easter flowers at Eternal Mercy (Memphis, Tenn.) this year. The altar was beautifully decorated with ten lilies and two chrysanthemums. One hundred and twenty three people worshipped the resurrected Lord in the beautifully decorated church.

Alberta, C. (Cross of Christ) Pax Natura Society for the Rehabilitation of the Deaf is a new entity now, set up with a Board of Directors to take care of both Pax Natura Ranch and Pax Natura House. The new society now is the owner of a home through a generous C.M.H.C. loan and is in the business of providing housing for the deaf in Edmonton. The new society announces that Pax Natura Ranch is now applying for a 20 year lease for establishing a permanent facility and is planning to establish a yard to take care of rehabilitation needs and a lodge to house the many activities.

If you plant for years, plant grass.
If you plant for decades, plant trees.
If you plant for centuries, plant men, women.
If you plant for eternity, plant the Word of God.
-- anon.

Chicago, (Wright College) Wright College has for the past few years supported classes for the deaf in a number of special interest areas. During the fall, 77 adults enrolled in 9 courses ranging from high school equivalency to vocational and cultural enrichment area of influence. However, Chicago is a big city and transportation is a problem when only one center offers programs. Sam Block is talking with responsible people in the area with hopes for more and larger programs. An ABE class for black deaf adults is planned for the Ephphatha Lutheran Church on the South Side this winter.

Some things get done badly because they are genuinely hard to do well, and some get done badly because nobody tried hard enough to do them well.
EILEEN SHANAHAN

Memphis, Tenn. (Eternal Mercy) Two of our Lutheran pastors in Memphis are making preparations for retirement this year: Rev. DeWitt Robinson of Calvary, and Rev. Paul Schmidt of Redeemer. Let us thank God for their faithful service and pray for His continued blessing on the congregations. Rev. Leber and Vicar Friedrich, with all the other pastors are still helping at Immanuel since Rev. Schuler left last November.

Don't stay away from church-
Because you are POOR ... admission is free.
Because you are RICH ... we can remedy that.
Because it RAINS ... you go to work in the rain.
Because it is HOT ... so is the golf course.
Because it is COLD ... it is warm and friendly here.
Because of HYPOCRITES ... you associate with them every day.
Because of COMPANY ... they will admire your loyalty - bring them along.
Because of CLOTHES ... our church is not a fashion show.
Because of CHURCH STANDARDS ... take a look at Bible standards if you think ours are too high.
Because of EMOTIONALISM in religion ... how about the ball game?
Because the church always wants MONEY ... so does the grocer.
Because you have TIME AHEAD LATER for church ... ARE YOU SURE?

SEMINAR FOR WORKERS
AMONG THE DEAF APPROVED
BY WHEAT RIDGE FOUNDATION

(continued from page 1) ...

1. Providing social work counseling for the deaf community and their family.
2. Providing education regarding available resources and how they may be used.
3. Conducting family counseling sessions with the element of "prevention".
4. Acquainting the deaf with the professional social worker.
5. Gaining experience and skill in approaching the deaf community.

Funds for support of all the projects come from contributions to the Wheat Ridge Foundation Christmas Seals Campaign conducted annually in congregations of the Lutheran Church-Missouri Synod.

For further information on the deaf seminar, contact either the Reverend Daniel Pokorny or Dr. Raymond C. Hohenstein.



LETTER FROM THE PHILIPPINES.....

(continued from page 1)

and the retarded and the many that have been deformed due to ignorance, neglect and plain meanness to fellow human beings. We must go from house to house to serve the unfortunates and perhaps gather them in one place and "humanize" them through the love God has for them also. Can we perhaps start a pilot project here? Waiting for LCP to do it, it seems to me at the present time, is a form of exercise in futility. Your international organization can be a force to educate the young churches in proper concern for the truly unfortunate such as the handicapped people we have in mind. Unfortunately I do not have the expertise - nor the prospects of a long life to start a project that needs continuation and responsible administration. May I hear from you?

Rev. Alvars A. Carino, D.D.

I hope this letter will inspire the ILDA Convention in Washington, D.C. to began a pilot project on this urgent and most needful Christian obligation!

The Editor

Be very slow to believe that you are wiser than all others; it is a fatal but common error. Where one has been saved by a true estimation of another's weakness, thousands have been destroyed by a false appreciation of their own strength.

Charles C. Colton

News from NAD

By Amy Gordon

Late in Jan.'75, the National Association of the Deaf joined with three other concerned groups to petition the Federal Communications Commission to institute rule making that would give 13.4 million deaf and hearing impaired persons access to life-saving information. The petition, which if adopted, would require television networks to broadcast emergency bulletins in visual form, was announced at a press conference at the National Law Center at George Washington University on January 21st.

Co-petitioners from DEAF-PRIDE, a Washington, D.C. activist organization of parents and deaf adults, A.G. Bell, DEAF WATCH (Demanding Equal Access to Facts and Warnings Aired on Television for Citizens who are Hearing Impaired), a legal action group which organized the petitions, and NAD voiced their constituents support for the petition. The press conference was the first where deaf participants directly addressed the media and the public using simultaneous translation in sign language.

Mr. Frederick Schreiber, speaking on behalf of the National Association of the Deaf called the petition "a major step forward in the long battle to gain access to life saving information. Our organization has sought for years to assert our right to be informed thru approaches to the individual broadcasters and the FCC."

The FCC recognized the need for visual televised warnings in 1970 when it recommended that stations transmit written notifications, on a voluntary basis, during natural disasters such as hurricanes and earthquakes as well as any other event which endangers the lives and property of people. Today, however, five years later, only 30% of the television stations have complied with the FCC request. Such action could have possibly prevented the deaths of an estimated 2,000 people whose lives were destroyed in natural disasters during the past eight years.

It is evident that stronger action must be taken now. The only way to assure that the FCC will adopt uniform rule making is for you to demonstrate your support by writing to the FCC and your representatives in Congress. Your letters to the FCC, urging this action, should be sent immediately to:

The Federal Communication Commission
Concerning File No. RM 2502,
Rule No. Part 73
1919 M Street, N.W.
Washington, D.C. 20054

An additional copy should be sent to Amy Gordon at the NAD so that the organization can introduce your solidarity in supporting the petition at an FCC hearing.

ADVISORY COUNCIL ON DEAFNESS...

On Feb. 7, 1975, the National Association of the Deaf established the first Advisory Council on Deafness to the Rehabilitation Services Administration. During a meeting with a select group of persons working in the field of deafness, Commissioner Adams met with Frederick Schreiber, Executive Secretary of the NAD who will be the chairman of the new Council.

Mr. Schreiber is now contacting consumers from organization of and for the deaf to serve on the Council. Representatives

will be selected within the next few weeks. The first meeting of the Advisory Council is scheduled for April 7th at the Commissioner's Office.

The Advisory Council was created to open direct and continuous communication between the Commissioner's Office and the Deaf community.

"PLEASE, SOMEBODY HELP ME
FIND MY FATHER!"

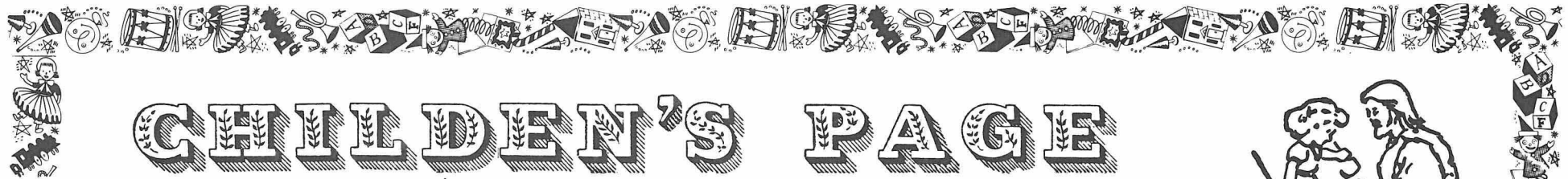
..... (continued from page 3)

In the summer of 1968 he led a South American tour which visited missionaries in mission fields in seven countries, and in the summer of 1972 he led a second tour of world missions which visited missionaries and sister churches in 14 countries around the globe.

Pastor Barry's wife, Jean, is a registered nurse and graduated from Lutheran Hospital, St. Louis, Missouri. Their oldest daughter, Kristine Becker, is married and resides in Fort Dodge, Iowa. Beth, age 17, and Keith, 15, are still at home.

Upon accepting the call, Pastor Barry said "Under the guidance of the Holy Spirit, our church is ready to move ahead aggressively in mission and leave a legacy for which we can be pleased and thankful to God."

Rev. H. Rohe



CHILDREN'S PAGE

Meet...



Peter W. Marshall

Peter W. Marshall, Research Assistant & Consultant of our 'Children's Page'.

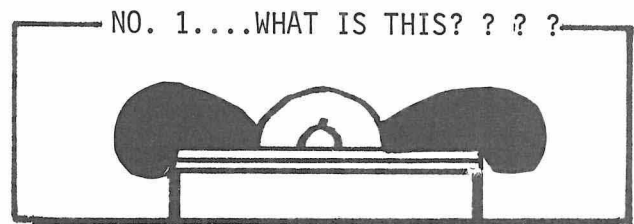
Peter has been helping his father, Editor Archie, to make this 'Children's Page' more interesting and relevant to our youthful readers.

Peter is 14 years old, a 9th grade student at Beaumont High School in St. Louis, Mo. He hopes someday to become an architect.

Besides working with his father on the 'Children's Page', he also proof-reads the rest of the paper when he doesn't have anything else to do and often spots errors that his father overlooked. Sometimes, however, an error slips by both of them which only proves that two can make as big a boner as one.

Peter is now waiting to hear from his peers and youthful readers with some good ideas, games, puzzles, poems, stories and jokes that can be used on this 'Children's Page'. He promises to include the names and addresses of contributors at the bottom their work. Please mail contributions to Peter at his home address:

3743 Palm Street
St. Louis, Missouri 63107



***** DETECTIVE *****
*
* A frantic man calls up the police and *
* says, "My wife is dead. She committed *
* suicide!" A detective answering the *
* call asks the man how did he figure it *
* was suicide. The man pauses for a *
* moment and replies, "My dead wife left *
* me a note which I found between pages *
* 139 and 140 of our Bible." The detec- *
* tive snaps the handcuffs on the man and *
* takes him off to jail. *
* HOW DID THE DETECTIVE KNOW THAT THE *
* MAN WAS LYING? ? ? *
* (see answer at the bottom of this page) *

HA HA HA HA HA HA HA HA HA HA HA HA HA HA HA HA

A very high-pressure vacuum cleaner salesman was forcing a home demonstration on a prospective customer. He took a large paper bag out of his case, and proceeded to scatter the contents all over Mrs. Whipple's beautiful living room rug - coffee grounds and all sorts of dust and dirt.

Then he said, "Madam, I'll eat every bit of this stuff that my vacuum cleaner doesn't pick up."

Mrs. Whipple started out of the room. "Where are you going?" asked the salesman. "To get a knife and fork for you," she said, "We don't have electricity."

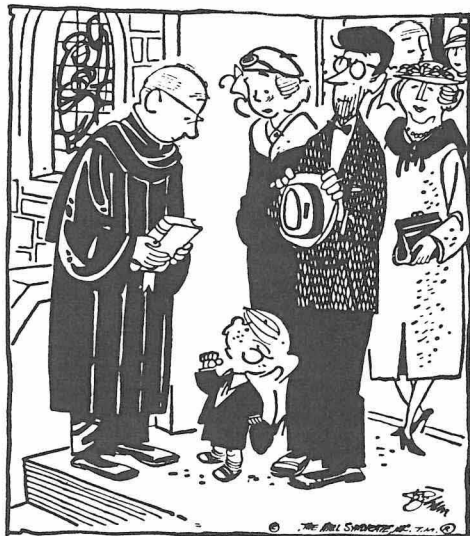
WAITER: Do you want your eggs turned over?
CUSTOMER: Yes! To a museum of natural history!

BIBLE QUIZ

Read Genesis, chapters 10-29. If you have difficulty reading the King James version or the Revised Standard Version of the Bible, try the new "Living Bible." It's easier to read. You may buy it at most book stores.

1. What great structure (building) did the people build in the plains of Shinar?
2. What did God do to stop this building?
3. Who was the son of Terah?
4. What promise did God make to Abraham? 12:2
5. Who was Abraham's wife?
6. Who was Lot?
7. What was the name of the wicked city where Lot lived?
8. What message did three strangers bring to Abraham that caused Sarah to laugh?
9. What name did God give Abraham and Sarah's son?
10. What happened to Sodom and Gomorrah?
11. What happened to Lot's wife when she disobeyed God and turned to look back at the city?
12. How did God test Abraham's love for Him?
13. What kind of animal did God provide in Isaac's place as an offering?
14. Who was chosen to be Isaac's wife, and in what way was she chosen?
15. What were the names of the twin sons born to Isaac and his wife?
16. For what did Esau sell his birthright?
17. How did Jacob deceive his father and get the best blessing?
18. How many years did Jacob have to work for his two wives, Leah and Rachel?

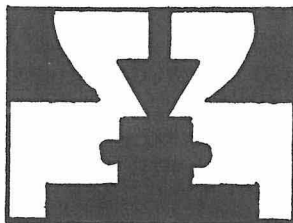
--from Good Shepherd of Deaf Lutheran Church Newsletter



"What are you gonna buy with my dad's quarter?"

...ANIMAL FAIR....

I went to the animal fair,
The birds and beasts were
there.
The big baboon, by the light
of the moon,
Was combing his auburn hair.
The monkey, he got drunk,
And sat on the elephant's
trunk.
The elephant sneezed and
fell on his knees,
And what became of the monk,
the monk?
unknown



NO. 2

..WHAT IS THIS? ? ?

ANSWERS
NO. 1. A FAT MAN LYING ON A WATER BED.....
NO. 2. TWO WOMEN GOSSIPING
DETECTIVE PUZZLE ANSWER. IN THE BIBLE AS IN
ALL BOOKS, PAGES 139 & 140 are one page!