



# The DEAF LUTHERAN



April, 1975

ST. LOUIS, MISSOURI

Volume 67, No. 4

## Lutherans Volunteer Services at Institute for the Deaf, Beirut, Lebanon



Jay Whittaker



Evelyn Whittaker

Jay and Evelyn Whittaker, members of The Church of The Savior, Paramus, New Jersey, have volunteered their services to The Institute for the Deaf in Beirut, Lebanon where they will assist in building a four floor addition to the school and in training the adult national staff. They will also help train young deaf students in woodworking and electrical workshops and teach classes in English and Typing. The services of the Whittakers was obtained by the L C U S A World Brotherhood Exchange in response to a request from Rev. Andeweg, Anglican Minister, Director of the school. Rev. Dennis Hilgendorf, our L C M S pastor, Chairman of our Middle East Lutheran Mission (M E L M) in Beirut writes: "We are excited about the possibility of the Whittakers joining us in the Lord's service in the Middle East and look forward to welcoming them among us -- our small conference will be very happy to have them in our fellowship." The Whittakers will begin their new tasks in April.

Thank You, Lord, for the blessings brought to Beirut, Lebanon through the volunteer work of Jay and Evelyn. Help them to retain their enthusiasm for this work they are doing in Your service and to always remember their high calling in Christ, as they teach Woodworking, electrical work, English and typing, or simply live with the deaf students around them.

H.W. Rohe

## Meet the...

## ROGATE LUTHERAN DEAF MISSIONS

A record 64 deaf attended the January worship services at Rogate Lutheran Church. Pastor Frank Wagenknecht, who served Trinity Lutheran Church for the Deaf in Pittsburgh, Pa., from 1960 to 1968 is doing part-time work among the deaf in the Tampa Bay area where it is estimated that there are approximately 1000 deaf in the area. Presently there are 21 communicants, having increased from 2 communicants the past three years. The Lutheran members have a near perfect record of attendance. It is rare when one of the 21 communicants is absent from the worship services. Services are held every third Sunday of the month at 7:00 p.m. Following the service there is a regular fellowship hour in which mem-



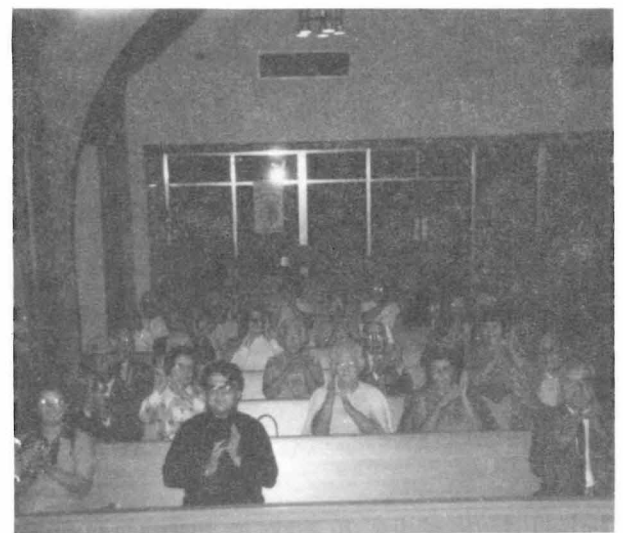
This model of Rogate Church was constructed by Mr. Frank Parker, a member of the Rogate Mission. It was approximately 2 feet by 2 feet, made mostly from plastic and covered with cookies and icing.

Additional Pictures on Page 6...

++++++  
Where there is love there is a song  
To help when things are going wrong,  
Where there is love there is a smile  
To make all things more worthwhile,  
Where there is love there is peace,  
A tranquil place where wars cease.  
Love changes darkness into light  
And makes the heart take  
"wingless flight".  
Oh, blest are they who walk in love,  
They also walk with God above -  
And when man walks with God again,  
There shall be Peace On Earth ...  
for men!

++++++

## Clearwater, Florida



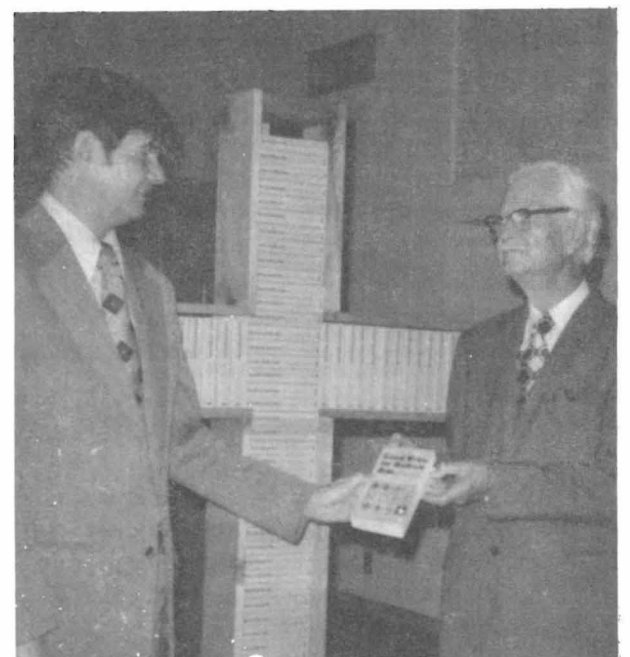
THE ROGATE FAMILY WORSHIPS

bers take turns acting as hostesses for the evening. Usually there are sandwiches and drink plus dessert and a lot of talk. The deaf travel from as far away as a 300 mile round trip to attend the worship services.

Rogate Lutheran Church which members 450 communicants is indeed happy to offer its facilities to the deaf of the community and constantly seeks to offer aid in broadening this ministry. Many folks come to Clearwater, Florida for vacation

Our church is located on East Bay Drive near Highway 19.

Pastor Frank Wagenknecht



Mr. Louis Eigel receives a copy of the Good News For Modern Man. The cross was constructed by Pastor Wagenknecht and then filled with bibles given away



Lutheran Deaf Mission Staff

Rev. Herbert W. Rohe, Secretary for Ministry to the Deaf  
500 N. Broadway, St. Louis, Mo. 63102 314-231-6969

Full-Time Pastors

Rev. Fred H. Allen, 8448 S. Indiana Ave., Chicago, Ill. 60619	(312) 994-5697
Rev. Orlin S. Anderson, 104 Finley St., Jacksonville, Ill. 62650	(217) 243-2528
Rev. Clark R. Bailey, 4911 Anna St., Warren, Mich. 48092	(313) 751-5823
Rev. Robert A. Bauer, 5808 113 B St., Edmonton, Alta., Can.	(403) 434-1671
Rev. Robert G. Blakely, 6922 Hyde Park Dr., Dallas, Tex. 75231	(214) 341-2216
Rev. Walter Busby, 220 San Marco, St. Augustine, Fla. 32084	(904) 829-6743
Rev. David Leroy Carstens, R. 2, Box 587E, Connellys Springs, N. C. 28612	(704) 397-5152
Rev. Robert M. Corl Jr., 1929 Huxley St., Madison, Wis. 53704	(608) 249-8076
Rev. Paul Dorr, 2416 N. Grant Blvd., Milwaukee, Wis. 53210	
Rev. A. E. Ferber, 246 East 74th Terr., Kansas City, Mo. 64114	(816) 363-3596
Rev. Theodore Frederickking, 9902 N. 5th Ave., Phoenix, Ariz. 85021	(602) 944-1911
Rev. F. P. Gehrs, 7441 113th St., Delta, B. C., Canada V4C 5B2	(604) 594-2918
Rev. G. A. Gehrs Jr., 6262 Soledad, Riverside, Calif. 92504	(714) 689-8380
Rev. C. Roland Gerhold, 510 Parkers St., Newark, N. J. 07104	(201) 485-2260
Rev. Larry Guenzel, 1530 Creek St., Rochester, N. Y. 14625	(716) 671-5944
Rev. Francis G. Gyle, 6129 Shirley St., Halifax, N. S., Canada	
Rev. Don Haug, 4388 Harvest Lane, Houston, Tex. 77004	(713) 529-5567
Rev. August Hauptman, 3476 Drummond Rd., Toledo, Ohio 43606	(419) 472-5586
Rev. Martin Hewitt, 6301 Alamo, St. Louis, Mo. 63105	(314) 725-8349
Rev. Daniel Hodgson, 59 Maxwell Rd., Garden City, N. Y. 11530	(516) 248-2357
Rev. Louis R. Jasper, 32 Oxford Road, 1st floor, Kowloon Tong, Hong Kong	
Rev. A. T. Jonas, 1207 S. Vermont Ave., Los Angeles, Calif. 90006	(213) 737-3963
Rev. Charles Jones, 47 Elm St., Foxboro, Mass. 02035	(617) 543-8891
Rev. Martin Kosche, 116 Walnut St., Delavan, Wis. 53115	(414) 728-5980
Rev. W. H. Lange, 5070 Lake St., Omaha, Nebr. 68104	(402) 558-5672
Rev. Donald Leber, 4787 Scheibler Rd., Memphis, Tenn. 38128	(901) 386-3130
Rev. Roger Leonhardt, 308 E. 14th St., Devils Lake, N. Dak. 58301	(701) 662-3267
Rev. William Ludwig, 6547 46th Ave. N. E., Seattle, Wash. 98115	(206) 524-2283
Rev. Robert Muller, 5301 42nd Ave., Hyattsville, Md. 20781	(301) 864-2061
Rev. Jerold Munz, 1575 Street Rd., Apt. D-99, Warminster, Pa. 18974	(215) 674-3474
Rev. W. O. Neisch, 5049 Wishingwell Dr., Flint, Mich. 48507	(313) 694-5944
Rev. John Nickerson, 903 No. Golf Cul-de-Sac, Des Plaines, Ill. 60016	(312) 824-1446
Rev. Ervin Oermann, 1431 NW 202 St., Miami, Fla. 33169	(305) 653-2349
Rev. Marlow Olson, 4928 Guilford Ave., Indianapolis, Ind. 46205	(317) 283-1351
Rev. Allan Page, 841 16th St. S. E., Cedar Rapids, Iowa 52403	(319) 362-6528
Rev. Daniel Pokorny, 4703 Montgomery Pl., Beltsville, Md. 20705	(301) 937-2704
Rev. Myron Prok, 2085 Wascana Ave., Lakewood, Ohio 44107	(216) 228-0776
Rev. Richard Reinap, 3808 11th Ave. S., Minneapolis, Minn. 55407	(612) 824-8968
Rev. George C. Ring, 3919 E. 42 St., Des Moines, Iowa 50317	(515) 265-6987
Rev. Robert C. Rowland, 219 Meadowbrook Drive, Bloomington, Ill. 61701	(309) 663-5772
Rev. Marlin Sampson, 5505 Diamond Heights, San Francisco, Calif. 94131	(415) 589-1246
Rev. Kenneth E. Schnepf, Jr., 546 W. 153rd Street New York, N. Y. 10031	(212) 926-9078
Rev. Bruce Stam, 2920 Gilmore, Pittsburgh, Pa. 15221 Ph. Church:	(412) 731-2550
Rev. Walter D. Uhlig, M. A., M. S. T. 3807 Gillham Road, Kansas City, Mo. 64111	
Rev. George Winkler, W. 3614 Wellesley, Spokane, Wash. 99205	(816) 561-9030
Rev. Donald Winkler, 469 Park Overlook, Worthington, Ohio 43085	(509) 326-3227
Rev. Donald Zuhn, 12154 E. Ohio Ave., Aurora, Colo. 80012	(614) 846-8942
	(303) 366-7748

Part-Time Pastors

Rev. Wayne Bottlinger, 4768 Neville St., South Burnaby, B. C. Canada	
Rev. Robert Bremer, S. Carolina School for the Deaf and the Blind, Spartanburg, S. C.	(912) 244-7482
Rev. Russell Johnson, 1203 Linda Dr., Valdosta, Ga. 31601	(414) 445-7231
Rev. George Natonick, 2417 N. E. Ainsworth, Portland, Oregon 97211	
Rev. Delbert Thies, 3802 N. 48th St., Omaha, Nebr. 68104	(402) 453-8832
Rev. Frank Wagenknecht, 1625 Woodridge Dr., Clearwater, Fla. 33516	(813) 581-5414

Lay Ministers

Mr. Gilbert Berninghaus, 2511 N. 51st St., Omaha, Nebr. 68104	(402) 558-2487
Mr. Alex Brodie, Apt. 214, 1400 E. 11th Ave., Vancouver 12, B. C., Canada	(604) 879-8148
Mr. Robert D. Case, 1511 Cranford, Memphis, Tenn. 38117	(901) 682-0832
Mr. Don Fairman, 3726 Fifth Ave. N., Great Falls, Mont. 59401	(406) 452-2382
Mr. Richard E. French, 4324 S. W. Willow, Seattle, Wash. 98136	(206) 935-2920
Mr. Robert Oettel, 2115 Brown Road, Lakewood, Ohio 44107	(216) 221-7908
Mr. George Perry, 6002 Beaumont Drive, Fort Wayne, Indiana 46825	
Mr. Marion J. Van Manen, 1632 Hollenbeck Rd. No. 3, Sunnyvale, Calif. 94087	(408) 735-8825
Mr. Wilhelm Wegner, 502 E. Washington St., Delavan, Wis. 53115	(414) 728-6584
Mr. Harold Ziprick, 4328 Morley Trail, Calgary 48, Alta., Can.	(403) 282-7718

Parish Workers

Miss Ruth Fangmeier, 1902 N. Dayton St., Chicago, Ill. 60614	home (312) 953-8852
Lutheran Family Service of Ill., 59 E. Van Buren St., Chicago, Ill. 60605	office TTY (312) 939-0930
Miss Carol Hedensten, 1280 Marshall No. 3, St. Paul, Minn. 55104	(612) 646-1195
Deaconess Grace Jewett-Baranski, 1041 N. Long Ave., Chicago, Ill. 60651	MCM (312) 921-2734
Mrs. Doris Myhre, 955 N. 34th St., Milwaukee, Wis. 53208	(414) 344-4786

Vicars

Mr. Fred Anson, 41-01 75th St., Elmhurst, L. I., New York 11373	
Mr. Ron Friedrich, 1638 Faxon Ave., Memphis, Tenn. 38112	
Mr. Larry Larsen, Clearwater, Florida	
Mr. K. Omahr Mork 1333 N St., N. W. Washington, D. C.	TTY (202) 265-1168

Retired Pastors

Pastor John A. Beyer, 10549 20th Ave., N. E., Seattle, Wash. 98125	
Rev. N. Borchardt, 11719 Evanston Ave., Detroit, Mich. 48213	
Rev. R. Cordes, Sr., 1010 Lafond Ave., Apt. 9, St. Paul, Minn. 55104	
Rev. W. Ferber, 617 14th St. So., Fargo, N. D. 58102	
Rev. A. Ferber, 246 E. 74 Terrace, Kansas City, Mo. 64114	
Rev. M. E. Mueller, 2670 N. 46th St., Milwaukee, Wisc. 53216	
Rev. E. Scheibert, 10941 Wellington Ave., Melrose Park, Ill. 60146	
Rev. W. Westernmann, P. O. Box 27, Walkerton, Va. 23117	

Part-Time Pastors: Central Pennsylvania Synod

Rev. Kendig W. Bergstresser, 2501 Thomas St., Harrisburg, Pa., 17103	* (717) 238-7085
Rev. Preston Dusan, 219 Plum St., Williamsburg, Pa., 16693	(814) 832-2095
Rev. J. Richard Eckert, 314 S. 31st St., Harrisburg, Pa. 17109	(717) 545-1612
	TTY (717) 232-7716
Rev. Walter J. Emswiler, 1110 7th Ave., Altoona, Pa. 16602	(814) 943-8258
Rev. Walter H. Guigley, 501 Lawrence Ave., Lincoln Park, Reading, Pa. 19609	
	(215) 777-6421
Rev. William A. Hower, 700 Pleasure Rd., Lancaster, Pa. 17601	(717) 569-1245
Rev. Robert J. Johnson, 120 South Third St., Lewisburg, Pa. 17837	(717) 524-7575
Rev. Richard C. Jones, 900 S. Arlington Ave., Harrisburg, Pa. 17109	(717) 652-1852
Rev. James Koones, R. D. 2, Coopersburg, Pa. 18036	(215) 965-9443
Rev. Larry A. McConnell, 401 Spring Forge Dr., Spring Grove, Pa. 17362	(717) 225-4926
Lay Worker, Mr. Donald R. Gallion, 5501 Ridgeview Dr., Harrisburg, Pa. 17112	(717) 652-6847
* TTY same number.	

Lutheran Schools for the Deaf

Detroit School for the Deaf, Rev. Rodney Rynearson, Director
6861 E. Nevada, Detroit, Michigan 48234
Mill Neck School for the Deaf, Dr. Herbert Arkebauer, Headmaster
P. O. Box 12, Mill Neck, New York 11765

Father,

You give us so much, and we thank You so little,  
Help us to see that what we call ours is really  
Yours for us to share with one another.  
You have shown us, Lord, in Jesus Christ what it  
means to love.  
Help us to love each other for what we are and to use  
for our benefit the things You give us.  
Spare us, Lord, from using the people  
You meant us to love and from loving the things  
You meant us only to use. Amen.

For Change Of Address

Be sure to include your old address label stuck on the front of this issue, and send this clipping to:

Russell Healey, Business Manager  
4112 Cleveland Avenue  
St. Louis, Missouri, 63110

NEW ADDRESS:

Name			
Address			
City	State	Zip	

The DEAF LUTHERAN

April, 1975, Vol. 67, No. 4

Official Publication of the International Lutheran Deaf Association & the Board for Missions of the Lutheran Church-Missouri Synod. Published monthly by Concordia Publishing House, St. Louis, Mo., 63118. Subscription Price \$3.00 per year. Second-class postage paid at St. Louis, Missouri.

The Deaf Lutheran goes to press the 15th of the month, two weeks before issue. Send all news, pictures, stories, and articles as soon as ready, at least three weeks before issue, to the Editor.

The DEAF LUTHERAN

Archie D. Marshall, Editor  
3743 Palm Street  
St. Louis, Missouri 63107

International Lutheran Deaf Association

President — Elmer Francisco, 10004 East Mission, Spokane, Wash. 99206  
Secretary — Archie Marshall, 3743 Palm St., St. Louis, Mo. 63107  
Treasurer — Robert D. Case, 1511 Cranford, Memphis, Tenn. 38117 (901) 682-0832  
Pastoral Advisor — Rev. Rodney Rynearson, 7400 Stockton Ave., Detroit, Michigan 48234  
ILDA Vice-Presidents (Regions)  
Central — Mr. Joseph Kindred, 1439 Udell St., Indianapolis, Ind. 46223  
Dixie — Herman Spencer, 311 Third Ave., N. W., Conover, N. C. 28612  
Eastern — Mr. Edward A. Trainor Sr., P. O. Box 1283, Landover, Md. 20785  
Great Lakes — Mr. Clarence Schulz, 27212 El Capitan Dr., Warren, Mich. 48092  
Midwest — Dale Paden, 1680 Whitmore, Omaha, Nebr. 68112  
Northwest — Bob Kosanovich, 1405 67th Ave. E., Tacoma, Wash. 98424  
Pacific — Harold Thuve, 3218 W. 153d St., Gardena, Calif. 90249  
Regional Advisers  
Central — Rev. Martin Hewitt, 6301 Alamo Ave., St. Louis, Mo. 63105  
Dixie — Rev. Donald Leber, 4787 Scheibler Rd., Memphis, Tenn. 38128  
Eastern — Rev. Daniel Hodgson, 59 Maxwell Rd., Garden City, N. Y. 11530  
Great Lakes — Rev. Myron Prok, 2085 Wascana Ave., Lakewood, Ohio 44107  
Midwest — Rev. Walter Uhlig, 605 S. Churchill Ave., Sioux Falls, S. Dak. 57103  
Northwest — Rev. William Ludwig, 6547 46th Ave. N. E., Seattle, Wash. 98115  
Pacific — Rev. Marlin Sampson, 5505 Diamond Heights, San Francisco, Calif. 94131

Roster of staff with teletypewriter (TTY) units:

Rev. Fred H. Allen, Chicago, Ill. (312) 994-5697 (TV phone)  
Rev. Orlin S. Anderson, Jacksonville, Ill. (217) 243-2528  
Deaconess Grace Jewett-Baranski, Chicago, Ill.

(312) 921-2734  
Rev. Robert Bauer, Edmonton, Alta., Can. (403) 435-7788  
Rev. Robert C. Blakely, Dallas, Tex. (214) 341-2216  
Mr. Alex Brodie, Vancouver, B. C., Can. (604) 879-8148  
Mr. Robert D. Case, Memphis, Tenn. (901) 682-0832  
Rev. Robert M. Corl Jr., Madison, Wis. (608) 249-8076  
Mr. Richard E. French, Seattle, Wash. (206) 935-2920  
Rev. F. P. Gehrs, Vancouver, Can. (604) 594-2918  
Rev. C. Roland Gerhold, Newark, N. J. (201) 485-2261  
Rev. Larry Guenzel, Rochester, N. Y. (716) 671-5944  
Rev. Martin Hewitt, St. Louis, Mo. (314) 725-8349  
Rev. Daniel Hodgson, Garden City, N. Y. (516) 248-2357  
Rev. Martin G. Kosche, Delavan, Wis. (414) 728-5980  
Rev. Donald Leber, Memphis, Tenn., (901) 386-3130  
Rev. Robert Muller, Hyattsville, Md. (301) 864-2119  
Rev. George Natonick, Portland, Oreg. (503) 281-4480  
Rev. John Nickerson, Chicago, Ill. (312) 824-1446  
Rev. Robert Oettel, Chicago, Ill. (312) 261-1851 (MCM unit)  
Rev. Ervin Oermann, Miami, Fla. (305) 653-2349  
Rev. Allan Page, Cedar Rapids, Ia. (319) 362-6528  
Rev. Daniel Pokorny, Beltsville, Md. (301) 937-2704  
Rev. Richard Reinap, St. Paul, Minn. (612) 824-8968  
Rev. Robert C. Rowland, Bloomington, Ill. (309) 663-5772  
Rev. Kenneth E. Schnepf, Jr., New York, N. Y.

(212) 926-9078  
Rev. Walter Uhlig, Sioux Falls, S. Dak. (605) 336-9481  
Mr. Marion J. Van Manen, Sunnyvale, Calif. (408) 735-8825  
Rev. Frank Wagenknecht, Clearwater, Fla. (813) 531-2761  
Rev. George Winkler, Spokane, Wash. (509) 326-9052  
Rev. Donald W. Zuhn, Aurora, Colorado (303) 366-7748

Churches with TTY units:

Chicago, Ill., Ephphatha (312) 723-3232 (MCM unit)  
Dallas, Tex., (214) 368-1371  
Delavan, Wis., Holy Cross (414) 728-5980  
Elmhurst, N. Y., St. Matthew (212) 335-8141  
Jacksonville, Ill., Christ (217) 243-2528  
Memphis, Tenn., Eternal Mercy (901) 274-2727  
Milwaukee, Wis., Emmanuel (414) 871-2700  
Newark, N. J., St. Matthew (201) 485-2261  
N. Miami, Fla., Deaf Zion (305) 688-0312  
Pittsburgh, Pa., Trinity (412) 731-2550  
St. Louis, Mo., Holy Cross (314) 533-6035  
St. Paul, Minn., Prince of Peace (612) 644-2365  
Sunnyvale, Calif., (408) 736-9216  
Vancouver, B. C., Can., Trinity (604) 433-8612  
Warminster, Pa., (215) 674-3474



In Paul's letters to the Christians of his day, he wrote at one time, a thought that went like this: 'If it were not for the Resurrection, that is, if there were no Resurrection of Jesus Christ from the Dead, then there is no reason for us to have a church and we can go home'...'But if Christ didn't rise, your faith can't help you, and you are still in your sins.'(ICorinthians 15: 17). Most certainly through the witness of 12 and then some more than 500 and through St. Paul himself who received a special revelation from God about Jesus' Resurrection, we have a testimony that HIS RESURRECTION IS INDEED A FACT.

However, although the Resurrection of Jesus Christ is a fact, many people have ALREADY GONE HOME. There are many in our churches for the deaf everywhere who not only have gone home but have not been to their church; have not publicly confessed Jesus Christ; have not received the Holy Sacrament, that is, God's great gift to us, The Lord's Supper; who have not participated in a Christian activity of their church this year; who have not stood in the place of receiving God's Mercy and Love.

Lent is a time of repentance. Repentance means to turn back. John the Baptist preached a 'turning back' or a 'return to God' before the coming of Jesus Christ. He preached this message to the Jew who was born a Jew. The Christian is not born a Christian but becomes a Christian at his Baptism. He maintains his Christian life through receiving God's Holy Word and the Sacraments which are offered in the church. While the Jew could not escape his Jew-ness, the Christian can most certainly escape and reject his Christian-ness. Apparently, many have done so and are doing so at this time. In the Prophetesies of Scripture there is a forecast much as the weather forecast tells us whether it will be sunshiny or be cloudy. The forecasts of the Bible say that many will turn away from God before Jesus comes again. We are not born as a Christian, We can decide to turn away or turn back and return to God. The decision is one which no one person can force on another. The only person who can make this decision is himself; only the person can receive God's call to turn back and do so.

Again, if it weren't for the Resurrection says St. Paul, we could all go home. BUT IT IS FOR THE RESURRECTION THAT WE PREPARE FOR EASTER because "But now Christ did rise from the dead, the first in the harvest of those who are sleeping in their graves. Since a man brought death, a Man also brought the resurrection of the dead. As in Adam all die, so in Christ all will be made alive. But everyone in his own group: first Christ, then, when He comes, those who belong to Christ." (1 Corinthians 15:20-23). To stand in any place other than under the Mercy and Love of Christ Who makes us alive now and forever - to stand in any other place settles for less. Let us all return to God's Mercy and Love and Worship with Praise and Thanksgiving in His Church.

from The Official Monthly Publication of the Lutheran Churches of the Deaf in South Texas



*Make no mistake, if He rose at all,  
It was His body.  
If the cells, disillusioned,  
Did not reverse,  
The molecules reknit,  
The ameno acids rekindle,  
The Church will fall.*

*It was not as the flowers  
Each soft spring recurring,  
Not as His spirit in the mouths  
And fuddled eyes of the eleven apostles.  
It was as His flesh, ours.*

*The same hinged thumbs and toes,  
The same valved heart,  
That pierced, withered, died, paused,  
Then regathered, out of enduring might,  
New strength to enclose.*

*Let us not mock God with metaphor,  
Analogy, sidestepping transcendence,  
Make of the event a parable,  
A sign painted in the faded credulity  
of earlier ages.*

*Let us walk through the door,  
The stone is rolled back, not papier mache,  
Not a stone in a story,  
But the vast rock of materiality  
That in the slow grinding of time  
Will eclipse for each of us  
The wide light of day.*

*And if we have an angel at the tomb,  
Make him a real angel, of max plax quanta,  
Vivid with hair, opaque in the dawn light,  
Robed in real linen  
Spun on a definite loom.*

*Let us not seek to make it less monstrous  
For our own convenience,  
Our own sense of beauty.  
Lest awakened at some unthinkable hour,  
We are embarassed by the miracle  
And crushed by remonstrance.*

by John Updike

from the Newsletter of Deaf Zion Lutheran Church, Opa Locka, Florida, Rev.E.R.Oermann

\*\*\*\*\*

Two men met in the police court. They had been friends in their youth. One sat on the judge's bench, the other in the prisoner's dock.

The case was tried and the prisoner was found guilty. Because they were friends many years before, you may think the judge will not condemn the man.

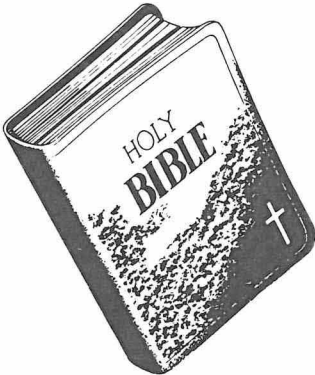
No, the judge must do his duty; justice must be done. The sentence was 14 days hard labor or a fine of \$50.00. The condemned man had nothing--no money to pay the fine, so he must spend the 14 days in the prison cell.

But as soon as he had pronounced the sentence, the judge rose from the bench, removed his robes, and stepped down to the dock. He stood beside the prisoner, paid the fine for him, and then said, "Now, John, you are coming home with me to supper."

It is the same for the sinner. God cannot overlook sin. Justice must be done and the sentence pronounced. But Christ Himself pays the debt and the sinner is free.

That's what Good Friday and Easter mean for all of us. Jesus, our Judge is also our Savior.

DAILY BIBLE READING GUIDE



Bible Reading  
for April 1975

THE GOAL IS CLEAR-BUT DISTANT

- 1 ..... John 20:24-29.....
- 2 ..... Micah 7:7-10.....
- 3 ..... Ezekiel 37:3-6.....
- 4 ..... Revelation 1:4-8..
- 5 ..... Jeremiah 31:10-14.

BANDING TOGETHER

- 6 Sunday.. John 20:19-23.....
- 7 ..... Acts 2:42-47.....
- 8 ..... Acts 4:32-35.....
- 9 ..... 1 John 5:1-5.....
- 10..... 1 Peter 1:3-5.....
- 11..... 1 Peter 2:13-17...
- 12..... 1 Peter 4:7-11....

CHRIST BECKONS

- 13 Sunday. Luke 24:36-40.....
- 14 ..... Rev. 5:9-11.....
- 15 ..... Acts 2:24-28.....
- 16 ..... Acts 3:12-16.....
- 17 ..... Acts 5:27-32.....
- 18 ..... 1 Peter 4:3-6.....
- 19 ..... Isaiah 42:10-13...

FOLLOWING HIM

- 20 Sunday. John 10:7-11.....
- 21 ..... Rev.7:9-12.....
- 22 ..... Acts 4:13-16.....
- 23 ..... Genesis 35:10-15..
- 24 ..... Psalm 91:11-16....
- 25 ..... Ephesians 1:15-20.
- 26 ..... Ephesians 2:4-8...

THE SUPER-HIGHWAY

- 27 Sunday. John 14:1-6.....
- 28 ..... Acts 6:1-4.....
- 29 ..... Acts 13:48-52.....
- 30 ..... Ezekiel 37:11-14..



Not for one single day  
Can I discern my way,  
But this I surely know-  
Who gives the day,  
Will show the way,  
So I securely go.  
John Oxenham





# Plan Now to Attend


## The Third Biennial Convention of the

# INTERNATIONAL LUTHERAN DEAF ASSOCIATION



WASHINGTON, D. C.      JULY 31 - AUGUST 3, 1975

To be Held at the Beautiful, New



**Stouffer's**  
**NATIONAL**  
**CENTER INN**  
ARLINGTON, VA. (A Stone's throw from D.C.)

\* \* BEAUTIFUL STOUFFER'S FEATURES: \* \*

+ 24-Hour Coffee Shop + Elaborate Restaurant + Cocktail Lounge with Live Entertainment + Roof-Top Swimming Pool + Suanas + Gift Shop and Car Rental in Lobby + Free Limousine Service to and From the Airport.

\* \* \* \* \*

FANTASTIC LOW RATES DURING THIS TIME OF INFLATION JUST FOR YOU!

+ \$21.00 Per Night Single +\$25.00 Per Night Double + Cots Available at \$5.00 Extra Per Night

(Guests provide their own meals which are available at the hotel and many nearby restaurants and cafes at prices everyone can afford.)

\* \* \* \* \*

This is an event that all deaf Lutheran people should mark down a "MUST" in their 1975 vacation plans. The ILDA needs YOU! As a deaf lay person you owe it to Christ and your deaf brothers and sisters to attend. Let us all make this an historic event for the glory of our Lord and the enrichment of Christian spiritual growth among all our brothers and sisters!

\* \* \* \* \*

REGISTRATION LIMITED TO 700 AT THE MOST SO BE EARLY IN SENDING IN YOUR APPLICATION ON THE RIGHT SIDE OF THIS PAGE. FIRST COME, FIRST SERVED STRICTLY ADHERED TO!

FOR ADDITIONAL INFORMATION, APPLICATIONS AND HOTEL BROCHURE, WRITE:

1975 ILDA Convention Committee  
Registration Chairman  
P.O. Box 247, Riverdale, Md. 20840

- \* CHANCEL DRAMAS

+ Cash Prizes

+ Plaque and Certificate Awards
- \* RELIGIOUS WORKSHOP DISPLAYS

+ Congregation Participation

+ Plaque and Certificate Awards
- \* INSPIRING EVENTS

+ Devotional Services

+ Religious Activities
- \* TRADITIONAL SUNDAY WORSHIP

+ Awe-Inspiring Service

+ The Lord's Supper
- \* OPENING DAY BUFFET

+ Served in the Lounge

+ Live Entertainment
- \* GUIDED TOURS

+ Mt. Vernon, Wash. D.C., Gallaudet

+ Interpreted in Sign Language
- \* EXCITING BANQUET

+ Fabulous Meal

+ Speakers, Entertainment, Awards
- \* PRECEDES WORLD FEDERATION OF THE DEAF

+ Stay Longer, Attend Both

+ A Real Vacation Opportunity
- \*\*\*\*\*

HOST CONGREGATIONS + + + LUTHERAN CHURCHES OF THE DEAF

\*\*\*\*\*

+ Christ Lutheran Church, Washington, D.C.

+ St. Marks Lutheran Church, Baltimore, Maryland

\*\*\*\*\*

FILL OUT THIS APPLICATION AND MAIL TO....1975 ILDA CONVENTION COMMITTEE

Registration Chairman...P.O.Box 247....Riverdale, Maryland 20840

(A Deposit of \$25.00 per person must be made to hold a room for you.

Payment in full is due June 1, 1975. No refunds after July 1, 1975)

Ms. \_\_\_\_\_ Date \_\_\_\_\_

Mr. \_\_\_\_\_

Rev. \_\_\_\_\_ No. in Group \_\_\_\_\_

\_\_\_\_\_ Last Name First Name

\_\_\_\_\_ street city state zip

\_\_\_\_\_ Arrival Date \_\_\_\_\_

\_\_\_\_\_ roommate if not spouse

ACCOMMODATIONS DESIRED:

Single...\$21.00 Per Night Double...\$25.00 Per Night

Cots.....\$ 5.00 Each \_\_\_\_\_ No. Wanted \_\_\_\_\_

I want these accommodations for Thursday Friday Saturday Other

(Check the days you plan to attend the convention.)

(All prices subject to 6% tax on accommodations.)

EVENTS COST PER PERSON....CHECK THOSE DESIRED

☐ Registration.....\$7.00 (Mandatory)

☐ Official ILDA Program....\$ 1.50

☐ Opening Buffet...\$3.75

☐ Banquet Saturday.....\$ 15.00

☐ Guided Tour Friday to Mt. Vernon (Washington's Home)..... 4.50

☐ Guided Tour Saturday of Wash.,D.C. and Gallaudet College..... 4.50

TOTAL FOR ALL EVENTS.....\$ 36.25

SAVE \$6.25 ! BUY A COMBINATION TICKET!

Combination Ticket (Includes all events).....\$ 30.00

☐ I am enclosing a deposit in the amount of \$ \_\_\_\_\_ towards my accommodations and the events I have checked, Bill me for the balance which I will pay in full on or before June 1, 1975.

☐ I am enclosing payment in full plus 6% tax on hotel accommodations.

SEND ONLY CERTIFIED CHECKS OR MONEY ORDERS PAYABLE TO: 1975 ILDA Convention Committee. WE ABSOLUTELY CANNOT BE RESPONSIBLE FOR CASH THAT IS SENT IN THE MAIL!

TOTAL AMOUNT ENCLOSED \$ \_\_\_\_\_.



# ILDA PAGE



## Eastern Region ILDA Forms Regional Board of Directors ...by EDWARD A. TRAINOR, SR.

Congregations in the Eastern Region each elected an ILDA representative to represent them in Eastern Regional ILDA affairs. These representatives, the Eastern Region ILDA officers and the Regional Advisor met at the Cenacle Retreat Center at Lake Ronkonoma, N.Y. July 31-August 2, 1974 to become the first regional ILDA board of directors.

Sixteen people attended the meeting in which 11 represented congregations of the Eastern Region. Eleven states and the District of Columbia were represented. There were four region officers, the Regional Advisor and two observers included in the group.

The meeting opened with a beautiful worship service conducted by the Regional Advisor, the Rev. Daniel A. Hodgson. The service was concluded celebrating the Lord's Supper. After the service, the first business session began at 9:00p.m. and lasted until midnight.

The Eastern Region ILDA Board opened their meeting with a resolution desiring to become a recognized branch of the International Lutheran Deaf Association and adopt a constitution in accord with the international constitution. After a 20-minute talk by Eastern Region ILDA President, Ed Trainor on the merits of lay people becoming actively involved in the service to our blessed Savior and our church and developing Christian leadership through the purposes, programs and projects in the ministry and mission of the ILDA, the resolution was passed unanimously.



Eastern Region ILDA Board unanimously passing resolution to become the first recognized branch of the International Lutheran Deaf Association.

A model constitution was introduced and work began immediately to draft a constitution through revision and amendment. Enthusiasm reached a new peak as the members of the board energetically pursued the project of the constitution. The articles of the constitution were written and passed and work on the by-laws progressed to the treasurer when the president stopped the work Saturday evening, February 1, to attend to other business related to the innovation of an Eastern Region ILDA Convention to replace the old region conferences.



Pres. Trainor (holding book) has "bench" discussion with Rev. Hodgson when article of constitution was questioned.



1. Ed Trainor explains procedure to be followed in adopting the new Eastern Region Constitution.



2. Eastern Reg. ILDA Sec'y. Dorothy Cohler, left, and Ed Trainor, right, agreeing with one of her ideas.



3. "Feed Back" from some of the members of the Bd. of Directors, Eastern Reg. ILDA

4. "Coffee Breakers" Warren King, right, and James Cheese, left, rapping ILDA.

5. "Chow"...Talk 'n Food.

6. Eastern Reg. V. Prexy August Beyer making point.



The Eastern Region ILDA constitution contains the preamble and purposes of the proposed new ILDA constitution along with all the innovations and quite a deal of region implementations that will insure total involvement and participation in congregations as well as support to both, the region and international ILDA. It was also agreed that the Eastern Region would hold its first region ILDA convention in 1976 at Philadelphia in which the resolution and constitution passed by the board would seek passage and ratification through vox populi at the convention.

Plans for the 1976 Eastern Region ILDA convention are well under way by the host city and the Eastern Region ILDA Board will meet again Oct. 11 to 13, 1975 to complete the Eastern Region by-laws and take action on matters passed at the international convention held in Washington, D.C. this coming summer.

The meeting was adjourned Saturday night, February 1st, and Sunday morning, February 2nd, all people present were invited to attend the services at St. Matthews Lutheran Church of the Deaf in New York City. After the services, a chicken dinner was served to the Eastern Region ILDA Board which was followed by a captioned film and then delegates returned to their homes prepared to serve God in their own congregations through the ministry and mission of the ILDA.



ROGATE LUTHERAN DEAF MISSION  
Continued from Page 1



Mr. & Mrs. Roy Meinzer travel over 300 miles round trip to attend worship services. They are never absent.....



Recently confirmed adults shown with Pastor Wagenknecht are.....(Left to Right)..... Mr. & Mrs. Frank Parker;.... Mr. & Mrs. Louis Eigel and Mr. Don Mc Arthur.....

\*\*\*\*\*

SOUTH FLORIDA ASSOCIATION OF PARENTS OF THE DEAF, INC.  
The March 12th meeting of the Parents Association had a panel of deaf adults who have coped successfully with life. They talked about how they have dealt with problem that have arisen at home and at work for them as deaf people. The meeting was held at the Miami International Hospital, 17300 N.W. 7th Ave. off the Palmetto Expressway at the Florida Turnpike Exit. The Parents group, formerly known as the Dade Ass'n. of Parents, recently received their Charter from the State of Florida and at the same time changed their name to South Florida Association of Parents of the Deaf, Inc.

\*\*\*\*\*

"You must have longrange goals to keep you from being frustrated by shortrange failures."  
\* \* \*  
"It is a man's inalienable right to make a fool of himself, but he should not use up all his privilege at one time."  
--BITS OF WISDOM



DELAWARE VALLEY CHURCH NEEDS HELP. . . . .



THE LATEST IN TRANSPORTATION - The Rev. Jerold D. Munz, pastor of the Delaware Valley Lutheran Church to the Deaf, poses proudly in front of the new 1975 Ford Clubwagon which the church purchased recently.

New Jersey Deaf Lutherans won't have a hard time finding a way to get to church anymore.  
The Delaware Valley Lutheran Church of the Deaf of South Jersey-Philadelphia recently purchased a 1975 12 passenger Ford Clubwagon, according to the Rev. Jerold D. Munz, church pastor.  
Many elderly people who attend church at either Hope Lutheran, Nativity Lutheran, or at St. Philip's in Phila. do not own a car and have no way to get to church, other than depending on friends or public transportation. Public transportation is a problem in itself since most of the steps on buses and trains are too high for older people to manipulate.

Photo and story from The Lutheran Times in N.J., March, 1975

\*\*\*\*\*

THE FISH . . . A MARK OF THE CHRISTIAN  
Early Christians used a simple drawing of a fish to identify themselves to each other. The letters of the Greek word for fish are the first letters of five Greek words that spell out the confession "Jesus Christ, God's Son, Savior."  
\*\*\*\*\*

The van will also enable Pastor Munz, the area's full time pastor to the deaf, to visit, teach and conduct services in area schools for the deaf.  
The Delaware Valley Church made a down-payment on the van from a \$1,000 grant from the New Jersey Lutheran Women's Missionary League plus its own savings. However, the remaining \$3000 was obtained through a bank loan.  
Any individual or group interested in making a contribution to the Delaware Valley Church Van Fund should contact the Rev. Jerold D. Munz, P.O. Box 303, Warminster, Pa. 18974 or telephone (215) 674-3474....

"The trouble with a fellow who talks too fast is that he often says somethings he hasn't thought of yet."  
\*\*\*\*\*  
"The man who gets ahead is the one who does more than is necessary--and keeps on doing it."  
--BITS OF WISDOM

The Deaf Lutheran/April 1975  
\*\*\*\*\*

Opa Locka, Fla. (Deaf Zion).. Metro Mayor Stephen Clark and the Dade County Commissioners proclaimed Feb. 18th as "Dade County Awareness Day". The day was planned and promoted by the Dade County Advisory Board of the Handicapped. Sam Walters and Pastor Oermann are members of the board.

In preparation for Awareness Day, the board planned EXPERIENCE DAY for Feb. 12th and on that day each of the County Commissioners were to experience different handicaps. Mayor Clark wore opaque goggles to make him legally blind as he went about his duties that day. Senator Harry Cain was made "deaf" by Pastor Oermann and Sam Walters. They fitted him with earphones and a tape recorder playing pink sound. His experience began with a breakfast at his home with Pastor Oermann and Sam Walters. He went through his day as a deaf man. It was evident that deafness was a trying handicap for the former senator. Channel 7 TV covered the event with Senator Cain and showed it on their 6 and 11 o'clock news.

Experience Day and Awareness Day have made our leaders more aware of the needs of the disabled and have brought these needs to the attention of the general public. Hopefully, too, this will make them vote favorably in passing legislation for the physically disabled.

\*\*\*\*\*

A STORY of the man with a balky mule and makes a point. Whenever he got ready to work his mule, he would seize a two by four and bang the animal over the head with it. On this particular occasion a passerby saw him do it. Perplexed and startled, he stopped to inquire why the man was treating his mule this way. "This is really a stubborn mule," said the owner. "Whenever I want to work him, I have to make it clear to him that we have a job to do." "I see," said the spectator, "But why do you hit him with that board?" He wasn't ready for the owner's reply....

"I HAVE TO GET HIS ATTENTION FIRST."  
Maybe sickness or trouble is God's two by four for His people.

\*\*\*\*\*

If you don't feel as close to God as you used to, make no mistake about who has moved!



# can Missouri still laugh?

## you can always tell a . . . Lutheran

Lutheran Churches are identified by their commitment to the Lutheran Confessions, which were written during the Reformation movement of the 16th century. We observe the anniversary of that movement on Oct. 31, because that is the date on which Luther posted the 95 theses in 1517. Since the date does not fall on a Sunday this year, we will be commemorating the event in our services on October 27th.

While we take seriously God's gifts to us through the church, it is good for us not to take ourselves too seriously, also as Lutherans. We should be able to laugh at ourselves. Recently an item came across my desk entitled, "You Can Always Tell a Lutheran." Someone developed a list of criteria by which Lutherans can be more easily identified. Here are some of them. Remember to read them with your tongue in cheek.

Lutherans sing "A Mighty Fortress Is Our God" better than anyone else.

Lutherans make better coffee than almost anyone.

Lutherans believe that it is wrong to vote for a political candidate on purely religious grounds unless he is a Lutheran.

Lutherans believe in the importance of confession and frequently confess their sins, particularly when confronted with the evidence.

Lutherans generally are suspicious of pastors who have spotlights trained on their pulpits.

Lutherans believe in ecumenism because they want everyone else to become just like Lutherans.

Lutherans listen to sermons with great interest except when they are thinking of something else.

Lutherans don't think the church should abandon the principle of the tithe. They don't think the church should insist on it either.

Lutherans wouldn't trade jobs with their pastors but would like to trade vacations with him.

Lutherans believe in miracles and sometimes expect them, particularly during stewardship drives.

Lutherans who have never been on the church council claim they don't know what goes on at council meetings. Lutherans who have been on the council claim they don't either.

Lutherans enjoy church suppers and will pay as much as a dollar for the privilege of bringing the family to one.

Lutherans believe in change when it is for the better; they oppose it unflinchingly when it is for the worse.

Lutherans believe in an honorarium to a guest speaker. If he declines it, they believe in inviting him again.

Most Lutherans believe in sending their children to Sunday School. Some Lutherans believe in bringing their children to Sunday School. Many Lutherans haven't noticed the difference between the two.

Lutherans believe it is okay to poke fun at themselves, for which we can all be thankful. If they didn't believe that, they wouldn't have allowed a frivolous piece like this to be published.

(Reprinted from Northern Illinois Messenger of the Lutheran Witness Jan. 26, 1975. Originally from St. Paul Newsletter, Melrose Park, Ill. used with permission.)

## Answering Devise To Serve Deaf Of Community

CONTACT - St. Louis, a non-profit ecumenical agency, serving the metropolitan area with a crisis telephone center, announces the installation of Teletypewriter Answering Service. TTY is a cooperative venture between the Telecommunicators of Greater St. Louis, Inc. and CONTACT, to provide a 24 hour teletype communications center serving the deaf community through relaying messages and receiving requests for emergency assistance. Easily operated teletype machines provide instant type-written messages to or from a hearing impaired person or one without hearing or speech.

Training sessions will be conducted regularly at Litzsinger School, 10094 Litzsinger Rd. in Ladue, Missouri. Further information on this program may be had by contacting Howard Schwartz, 1427 Woodgate, St. Louis, Mo., 63122 (966-5825) TTY or Paul Metzler, CONTACT - St. Louis, P.O. Box 9249, St. Louis Missouri 63117 (725-3022) voice.



### "If I Were"

If I were a coat,  
I would wrap myself around the sad  
and lonely, and comfort them.

If I were a pair of gloves,  
I would touch a hand and bring  
warmth to the needy.

If I were a hat,  
I would crown the unloved with love

If I were a pair of shoes,  
I would cover cold, bare feet and  
give them support.

If I were - but I am not - any of this  
If I were-but I am not-any of this  
If I were - but I am not -  
any of this wear,  
but when I can,  
and where I am,  
I'll show someone I care!

-Mary Louise Merrill

### PSALM 151 - FOR BUSY PEOPLE

The following "Psalm For Busy People" was found on a card on a desk at Barat College in Lake Forest, Illinois, where the Orientation Conference for new campus pastors was being held last August:

The Lord is my pace setter. I shall not rush.  
He makes me stop and rest for quiet intervals.  
He provides me with images of stillness, which restores my  
serenity.  
He leads me in ways of efficiency, thru calmness of mind.  
And his guidance is peace.  
Even though I have a great many things to accomplish each day,

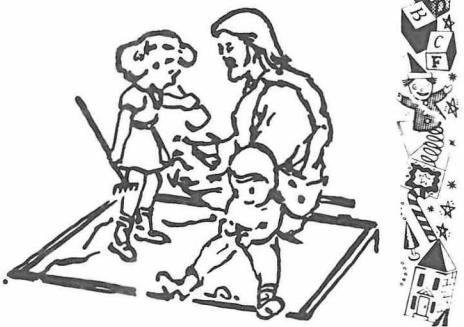
I will not fret for His presence is here.  
His timelessness, His all-importance will keep me in  
balance.  
He prepares refreshment and renewal in the midst of my  
activity by anointing my mind with His oils of tran-  
quility.  
My cup of JOYOUS energy overflows.  
Surely harmony and effectiveness shall be the fruits of my  
hours,  
For I shall walk in the pace of my Lord, and dwell in His  
house forever.



# CHILDREN'S PAGE

A BIBLE MATCHING QUIZ

How did you get along last month? Did you get all the answers? We hope you enjoy this opportunity to read the Bible. This time match the verse with the correct Bible reference and fill in the missing word in the reference.



BIBLE QUIZ  
(Read Genesis one to ten)

1. "And she called his name \_\_\_\_\_: and she said, 'Because I drew him out of the water.'"

2. "Now Moses kept the flock of \_\_\_\_\_ his father-in-law, the priest of Midian."

3. "And \_\_\_\_\_ said, 'Who is the Lord, that I should obey his voice to let Israel go?'"

4. "And \_\_\_\_\_ cast his rod before Pharaoh,
- and it became a serpent."

5. "And Aaron looked upon \_\_\_\_\_ and, behold, she was leprous" (Sick from leprosy).

6. "And the Lord opened the mouth of the ass, and she said unto \_\_\_\_\_ 'What have I done...'"

7. "The Lord spoke unto \_\_\_\_\_ the son of Nun, Moses' servant."

1. What does the word "Genesis" mean? (See Dictionary)

2. What did God create on the first day?

3. What is another name for the firmament?

4. What are the greater and the lesser lights that rule the day and the night?

5. What command did God give every growing thing- plant and animal?

6. On what day did God create man?

7. From what material did God form man?

8. How was Adam's helpmeet formed?

9. What name did Adam give his wife?

10. What was the name of the tree in the middle of the Garden of Eden, from which Adam could not eat?

11. In what form did Satan appear when he tempted Eve?

12. What was the punishment Adam and Eve were to receive for their sins?

13. How did God keep Adam and Eve from returning to the Garden of Eden?

14. Who were the first two children of Adam and Eve?

15. Why did God respect Abel's offering and not Cain's? (See Hebrews 11:4)

16. What caused Cain to kill Abel?

17. What was Cain's punishment?

18. Who was the third son of Adam and Eve?

19. Who lived to be the oldest man in history, reaching age of 969 years?

20. Who found favor in God's sight when the rest of the world was full of wickedness?

21. Who were Ham, Shem, and Japheth?

22. From what kind of wood did God instruct Noah to build the ark?

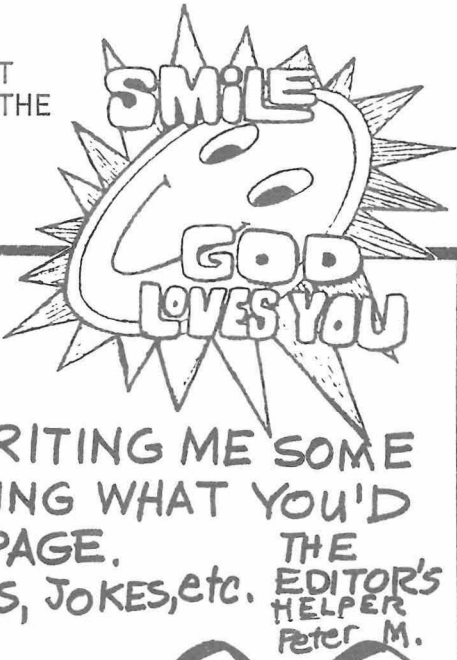
23. How many days and nights did the rain fall when God sent the flood?

24. How many people were saved in the ark?

25. On what mountain did the ark come to rest when the waters began to go down?

26. What sign did God give to show He would never again destroy the world with a flood?

Q. WHAT IS IT THAT STAYS HOT  
EVEN WHEN YOU PUT IT IN THE  
REFRIGERATOR ?  
A. A PEPPER



Hi KIDS

HOW ABOUT WRITING ME SOME  
LETTERS TELLING WHAT YOU'D  
LIKE ON THIS PAGE.  
P.S. SEND GAMES, JOKES, etc.

OFFICIAL ILDA PROGRAM ORDER APPLICATION

Editor: Please send me \_\_\_\_\_ copies of  
THE OFFICIAL ILDA PROGRAM magazine as soon as  
possible. I am enclosing a check or money order  
in the amount of \$1.75 for each copy ordered.

PLEASE SEND MY COPIES TO:

NAME \_\_\_\_\_  
STREET \_\_\_\_\_  
CITY \_\_\_\_\_ STATE \_\_\_\_\_ ZIP \_\_\_\_\_

Make Checks or Money Orders Payable to:  
The 1975 Convention Committee. Mail Coupon  
with Checks or Money Orders to:

1975 Convention Committee  
Program Editor  
P.O. Box 247  
Riverdale, Md. 20840

IT IS NEVER TOO LATE TO JOIN THE ILDA.....

Rejoice with us in Christ's love...Join Today

ILDA Membership Application

Type

(Check One)

Fill in your name and address on the  
spaces below. Use as many names and  
addresses as desired. Clip and mail to:  
Edward A. Trainor Sr., P.O.Box 247,  
Riverdale, Maryland 20840.

Make checks or money orders payable to:  
ILDA Program & Finance Director.  
Do Not Send Cash. Enclose \$2 per name.

	1-Active.....	2-Associate.....	3-Sustaining.....
NAME _____	<input type="checkbox"/>	<input type="checkbox"/>	<input type="checkbox"/>
Address _____	<input type="checkbox"/>	<input type="checkbox"/>	<input type="checkbox"/>
City _____ State _____ Zip _____	<input type="checkbox"/>	<input type="checkbox"/>	<input type="checkbox"/>
NAME _____	<input type="checkbox"/>	<input type="checkbox"/>	<input type="checkbox"/>
Address _____	<input type="checkbox"/>	<input type="checkbox"/>	<input type="checkbox"/>
City _____ State _____ Zip _____	<input type="checkbox"/>	<input type="checkbox"/>	<input type="checkbox"/>
NAME _____	<input type="checkbox"/>	<input type="checkbox"/>	<input type="checkbox"/>
Address _____	<input type="checkbox"/>	<input type="checkbox"/>	<input type="checkbox"/>
City _____ State _____ Zip _____	<input type="checkbox"/>	<input type="checkbox"/>	<input type="checkbox"/>

(Please Type or Print Plainly)