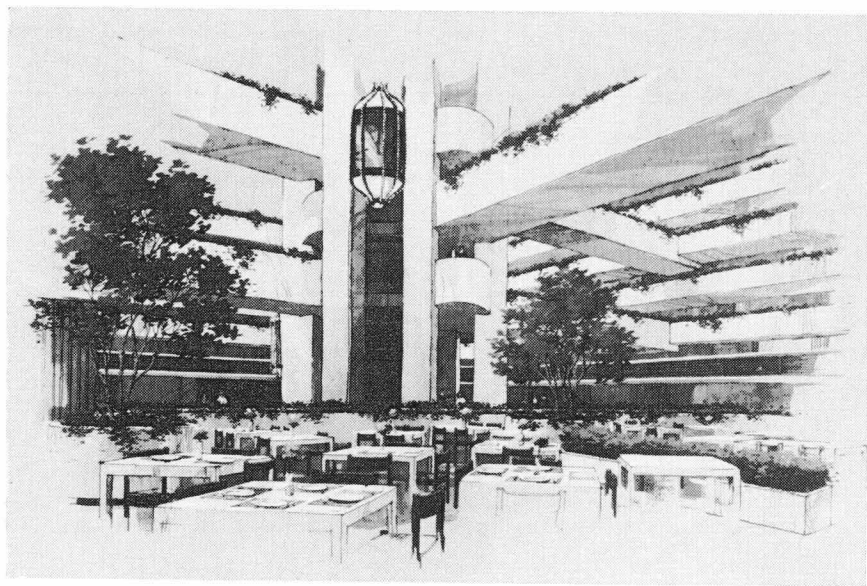




*The
Deaf
Lutheran*



**Lobby of the Regency Hyatt House
Chicago, Ill.**

**International Lutheran Deaf Association
July 16—18, 1971**

Cover Story

Here is the location of the first convention of the International Lutheran Deaf Association (ILDA) in Chicago, Ill., July 16—18.

Prepare yourself for a little shock when you arrive and enter the lobby of the new Regency Hyatt House. Looking up, you will see oriental kites floating near the ceiling 12 stories above ground level. Live trees and flora for your visual delight landscape an area that includes the 225-seat open dining area, nightclub, and registration desks. See-through, glass-enclosed elevators will transport you to the floor of your room on one of the four sides of the square courtyard. You will alight and travel a delicate system of bridges and balconies that lead to your terraced guest room.

Just being here is a treat in a never-never land come true. Don't miss out! Come to ILDA!

Going to ILDA ? ? ?

Use the *registration form* on page 68

A *hotel reservation* post card is attached between pages 66 and 67. Mail it before July 1 to get the reduced rates.

THE DEAF LUTHERAN

April—May 1971, Vol. 63, No. 4

Official Paper of the Board for Missions of
The Lutheran Church — Missouri Synod

Rev. Herbert W. Rohe, Secretary for Deaf Missions, 210 N. Broadway, St. Louis, Mo. 63102. Ph. (314) 231-6969.

Published bimonthly by Concordia Publishing House, St. Louis, Mo. 63118. Subscription price \$3.00 a year. Second-class postage paid at St. Louis, Mo.

THE DEAF LUTHERAN goes to press on the 1st Friday, 4 weeks before issue. Send all news, pictures, stories, and articles by the 12th of the month, 7 weeks before issue, to Rev. Martin A. Hewitt, Editor, 6301 Alamo Ave., St. Louis, Mo. 63105.

Change of address and subscriptions — THE DEAF LUTHERAN, 31 West Beacon St., West Hartford, Conn. 06119.

MOVING? CHANGING ADDRESSES?

Please clip the form on the back cover with the old address label. Mail it to THE DEAF LUTHERAN, 31 W. Beacon St., West Hartford, Conn. 06119.

A New School for the Deaf

Hong Kong

A few weeks ago Dr. Walter Wangerin stopped at the Mongkok Lutheran School for the Deaf during a brief stopover in Hong Kong. He came with a special package from the children of Peace Lutheran School in Detroit—a package of messages and greetings to the Chinese deaf children who now have a place where they can study and learn. It was a real person-to-person greeting because the members of Peace Lutheran Church are the messengers of God's love who made it possible for the school for the deaf to be built on top of Sharon Lutheran School, a school for about 2,000 nonhandicapped children.

The students and staff of this new school for the deaf waited for their new building for a long time. The school began in one rented room in Saviour School in 1968 with one class of 10 children. A year later a second class was added, each group using the same room for half the day. In September of 1970 three more classes were started, and we were able to use four classrooms in a high school located next door to the building site for the new school.

The first week in December 1970 was a time for great rejoicing. We were finally able to move into our own building. Though many things remained to be completed, we felt the great love of

God and His hand of blessing very close as we began to settle down in our own building.

Day by day as more furniture and equipment are added, we repeat our prayer of thanksgiving. What was for so many months of construction an empty shell has been transformed into a beehive of activity and meaningful sound. A woman brought her young child to be enrolled in the school. We quickly learned that the child was not deaf, and we carefully explained that we were operating a school for deaf children. The woman insisted that her child still be enrolled because she felt it was a good school, a different school.

It is a different school, different from every other school in Hong Kong. Carpets on the floor to reduce noise, special rooms for individual tutoring, and modern equipment in every classroom are only a few of the differences. Deaf children learning to love and trust Jesus as their Savior is the greatest difference. Not the least of our thanksgiving prayers is for the opportunity for these young deaf children to receive the news of their salvation. We are thankful that the news comes not in the form of brick and mortar, tables and chairs, but on a person-to-person basis.

REV. LOUIS JASPER

If God's light is shining on you, it will be sure to be seen by someone who is traveling in the dark.

The Signs to Follow

Psalm 100:4

In these fine spring days it's fun to take a drive with the family out on the highways and into the country. Have you ever tried counting the signs you pass? Sometimes it seems there are so many signs you can hardly see the beautiful countryside anymore. Signs which destroy the beauty of God's creation probably do more harm than good.

But signs can be helpful. Some signs tell us where we are. They might be signs on a street corner that tell the name of the streets or perhaps a sign on the edge of a town that tells its name and the name of the next town. Some signs give the driver directions or rules for driving. They tell him how fast to travel, when to stop, and warn him of dangers ahead, such as a sharp curve.

Signs can also tell about new things that are coming to our city or town. Maybe a new movie will soon be at a theater or perhaps a concert is going to be given in an auditorium. Signs can also announce that an important ball game will be played soon, or that a circus is coming.

Most of the signs we read advertise things that people are trying to sell. One sign tells us that if we use a certain gasoline in our car we'll have the greatest power in the world. A flashing bright sign tries to convince us that a certain brand of bread is the most

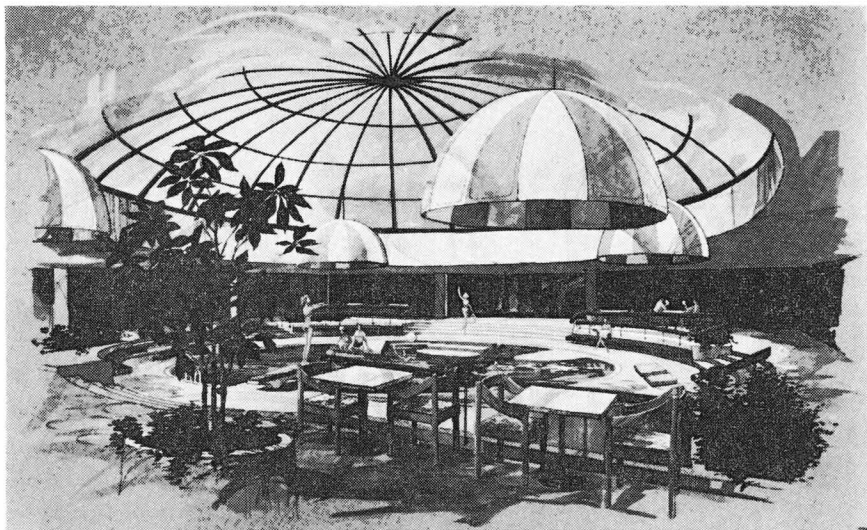
nourishing in the whole country.

Not all signs have words. You know what the flashing red light at a railroad crossing means. It warns you to stop immediately. The color green in a traffic light means "Go"; yellow says, "Be careful." We also use many signs in our church. Many of these signs don't have words, but still they have a message for us.

Let's see how many of the signs in our church you are able to read. The first one we notice when we come into the church is the cross on the altar. Every Christian, even very small children, can read this sign. Some people call it a symbol, and there's a slight difference, but we'll call them all signs for now.

There's a reason why the cross or crucifix is usually the first sign we see when we come into a church. It is only through Jesus that we can come before God and speak to Him in prayer and song. It is because of Jesus that we are now children of God and do not have to be afraid of coming before our God and Lord. The cross reminds us of what Jesus did by dying for us and rising from the dead. For His sake our sins have been forgiven.

In many churches we see the dove as a sign of the Holy Spirit. He brought faith into our hearts when we were baptized and helps us grow in faith. The open hand that pours down blessings reminds us of God the Father, who



Another view of what you will find at the Regency Hyatt House, location of the first ILDA convention, July 16—18. Will you be with us?

The focal point of the Regency Hyatt House pool/health club complex is a circular swimming pool surrounded by a terrace with live trees and plants. A domed, plexiglass roof will fill the pool area with natural light during the day; at night the area is lit by fixtures with huge, striped umbrellalike shades. Adjoining the pool area are complete health club and dining facilities

is our Father through our faith in His Son Jesus Christ. The triangle tells us that our God is three Persons in one God. The ark reminds us of how God saved Noah and his family, and it is a picture of the church, in which God is saving us and the rest of His family.

We could go on speaking of many signs or symbols in our own church and in others. We can see some in church windows, on altars, pulpits, lecterns, and baptismal fonts. Usually they are also on the cloth coverings or paraments used in the chancel.

The early Christians used signs and pictures also on the walls of

their churches. Sometimes big paintings would cover even the ceilings of their churches. The designs and pictures always had some spiritual meaning for the people. The lily, the fish, the peacock, the harp, the dragon, and thousands more were used to decorate the house of God.

And years ago Christians didn't stop there. They used these signs and symbols to decorate their homes. Even the cooking utensils had Christian pictures and words on them. Bible passages would be painted above the doors and around the top of the walls.

What purpose do such signs serve? Why bother with them,

and when we see them, why try to learn what they are saying?

Very often in His Word, God reminds us to worship Him. We are told to gather together to sing His praises. In Psalm 100:4 we read, "Enter into His gates with thanksgiving and into His courts with praise." The signs and symbols that are in our church remind us of the many reasons we have to sing praises to the Lord.

When we see a picture of Jesus in a beautiful church window, either praying in the Garden of Gethsemane or hanging on a cross or coming out of His grave or ascending into heaven, we are being told of some of the great things He has done to make us God's children. When we see Him carrying a lamb or leading a flock of sheep, we think of Him as our Good Shepherd.

Some altars have a carving of

Jesus giving His holy Supper to His disciples just before He was crucified. At that Supper He said to His disciples, "This do . . . in remembrance of Me." When we see this scene, or the altar, or people receiving this sacrament, we are reminded of the forgiveness and love Jesus gives to His disciples and we look forward to being able to receive His body and blood into our bodies through the bread and wine.

Yes, the signs in our church remind us of God's presence and mercy and love. They remind us of the many reasons we have to thank and praise Him. "Enter into His gates with thanksgiving and into His courts with praise: be thankful unto Him and bless His name. For the Lord is good; His mercy is everlasting, and His truth endureth to all generations."

—*Faith Forward Talks*

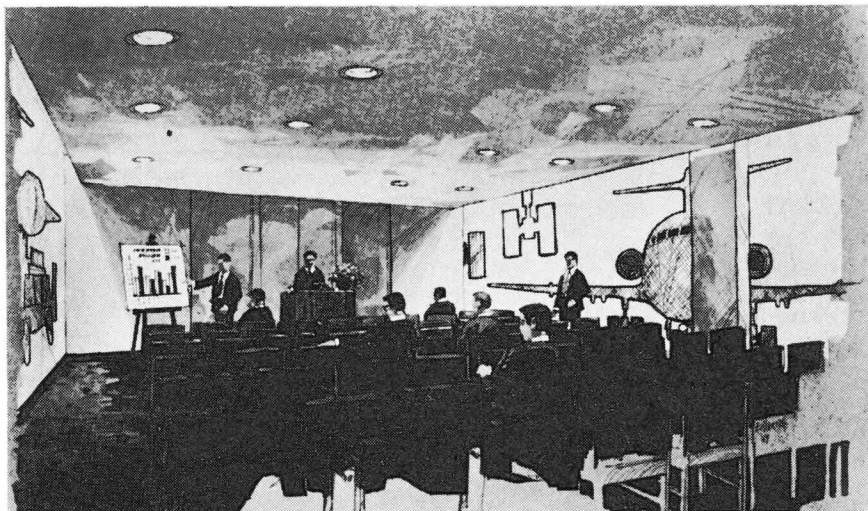
The Signs You See in Church

Grace and Pity

We have a sign for pity or sympathy. This word means to have feeling for someone in trouble. We make the sign as follows: The middle finger of the right hand, bent downward, is placed on the heart side of the body and pressed slightly as it moves up. Then the hand reaches out towards the person for whom one has the feeling with a stroking or

petting motion. In Job 6:14 we read: "To him that is afflicted (in trouble) pity should be shown." We often see people in sorrow and pain, but we can do little more than pity and sympathize.

But now in church we need a sign for grace. The sign for pity is not enough. We speak of the grace of God in Christ Jesus, or the grace of God towards all sinners. Mercy is often used in the



ILDA is meeting at the Regency Hyatt House, Chicago, July 16—18. Twelve meeting rooms in the new Regency Hyatt House are named for major airlines serving O'Hare International Airport. Each will be decorated in symbolic colors and decor appropriate to its namesake. Capacities vary from 96 to 450 persons, and each meeting room is divisible into two smaller rooms

same sense. Now what is the grace of God? It is God's love and feeling towards us, who are unworthy of His love, to give us forgiveness. His Son Jesus earned this forgiveness for us by His life and death. We see, then, that grace is bringing us something that we do not have, something we need.

The sign is made as follows: As in the sign for pity, place the curved middle finger of the right hand on the heart side of the body. But use both hands. The middle finger of the left hand will be near the middle finger of the right hand. Bring them up with the motion of feeling, starting the motion a little above the waist. Next, close the hands as if taking

something from the body. Now move the hands forward as towards a person on whom you want to place what you have taken from yourself. Open the hands as if putting a dress on someone and finish the sign with the feeling fingers stroking the person before you.

It is a beautiful sign. It brings out the Scriptural teaching. God bestows upon us (gives us) His grace. Ephesians 2:8: "By grace are ye saved through faith. . . . It is the gift of God."

G. W. GAERTNER

(This is the fourth article of Dr. G. W. Gaertner's series on church signs, reprinted by request from the 1959 DEAF LUTHERAN. Ed.)



FIELD

GLEANINGS

Stamps for Missions

Stamps for Missions is a volunteer self-supporting organization staffed by senior citizens, with headquarters at 210 N. Broadway, St. Louis, Mo. 63102.

Total sales for 1970 reached \$9,600. Raymond E. Hodges, president of the organization, writes: "We offer our sincere thanks to those who helped bring this about, especially members of the LWML, ladies aids, circles, and other individuals."

From 1956 to 1969 Stamps for Missions has made grants totaling \$50,000. This year they decided to make grants of \$3,000: \$2,000 to aid an American Indian to attend one of our church schools to prepare for Christ's mission among his own people; and \$1,000

to help the Japanese Lutheran Church repay a loan on a kindergarten school which now has 5 teachers and 130 children.

The organization has invested \$72,000 in synodical Church Extension Funds. With your active support receipts in 1971 could easily exceed \$10,000.

Congregations can write to the above address for instruction sheets on how to gather and process postage stamps to be sent in for the Stamps for Missions program.

Another Anniversary Year

The year 1971 is an anniversary year for our ministry to the deaf. The *Proceedings* of the 1896 synodical convention, pages 95 and 96, relate the action of Synod following Pastor A. Reinke's report and appeal. Synod resolved to establish a standing commission of five persons to plan and operate the mission. The first commission was based in Chicago, where we will hold our ILDA convention.

News Snatches

Pilgrim Lutheran Church of the Deaf, Kansas City, Mo., dedicated a sanctuary lamp in memory of Mrs. Etta Lueders on March 14. The sanctuary lamp

REMINDER

Treasurers of all congregations and fields are reminded to send their \$125 for ILDA by May 31, 1971, payable to:

**The International Lutheran
Deaf Association
c/o Warren A. Riege, Treas.
2723 W. Juneau Ave.
Milwaukee, Wis. 53208**

Notes of Interest

A Treat for Deaf Children Washington, D. C.

For 165 children from the Kendall Demonstration Elementary School for the Deaf, a recent afternoon at the circus delivered more than the usual thrills, cheers, and cotton candy.

It meant also a very special meeting with Mrs. Richard Nixon, wife of the President of the United States who, along with



nearly 6,000 handicapped children, attended the opening Washington performance of "The Greatest Show on Earth."

As the First Lady came up the aisle to take her seat, she immediately spied the smiling Kendall School students, who were clamoring for her attention.

"Oh, I remember you!" she exclaimed. "I'm so glad to see you again. You came over to the White House."

And, indeed, they had — during the holiday season in 1969 — to present a special program, "A Charley Brown Christmas," for President and Mrs. Nixon.

Christmas 1970 also proved to be a historic occasion. On December 26 President Nixon signed into law a bill establishing the Kendall School as the first demonstration elementary school for the deaf in the nation, which will experiment both in techniques and materials and serve as a model for the development of similar programs across the country.

with its ever-burning candle symbolizes that God in His love is always present with us.

Rev. Waldemar Neisch of Parkersburg, W. Va., has accepted the call to St. Paul Lutheran Church for the Deaf, Flint, Mich. His installation is June 6.

A class of seven students of the **Lutheran School for the Deaf** in Detroit, Mich., was confirmed on Palm Sunday at Our Savior Lutheran Church for the Deaf.

Rev. Donald Zuhn has been elected president of the Colorado Registry of Interpreters for the

Deaf. Since January he has been interpreting a few hours a week at the Community College of Denver and in the center for the hearing impaired.

Bethel Deaf Lutheran Church, Denver, Colo., was accepted and received upon its request as a subsidized mission of the Colorado District, Jan. 1971.

Christ Lutheran Church for the Deaf, Jacksonville, Ill., and its field, is being subsidized di-

rectly by the Central Illinois District as of January 1971.

What Eastern Region church has a new face? After much consideration this congregation decided to have its church done in white aluminum siding rather than accepting the expensive paint job estimates it received. **The Lutheran Church of the Deaf**, West Hartford, has a "new" building.



Eternal Mercy Lutheran Church for the Deaf, Memphis, Tenn., dedicated Feb. 21. The dedication bulletin explains the building as follows:

The building was designed by Mr. Herbert Schulingkamp Jr., a deaf member of the Lutheran Church from New Orleans, La. In consultation with Pastor Leber over a period of years Mr. Schulingkamp designed a building that would have the worship of the Triune God as its central purpose. That is why the entire central portion of the building is reserved for the sanctuary.

The sanctuary is narrow in the rear and wide in the front to give the person entering the feeling that importance lies at the front at the altar. The low ceiling in the back rises to a height of 40 feet and directs attention to the large crucifix window in the east wall.

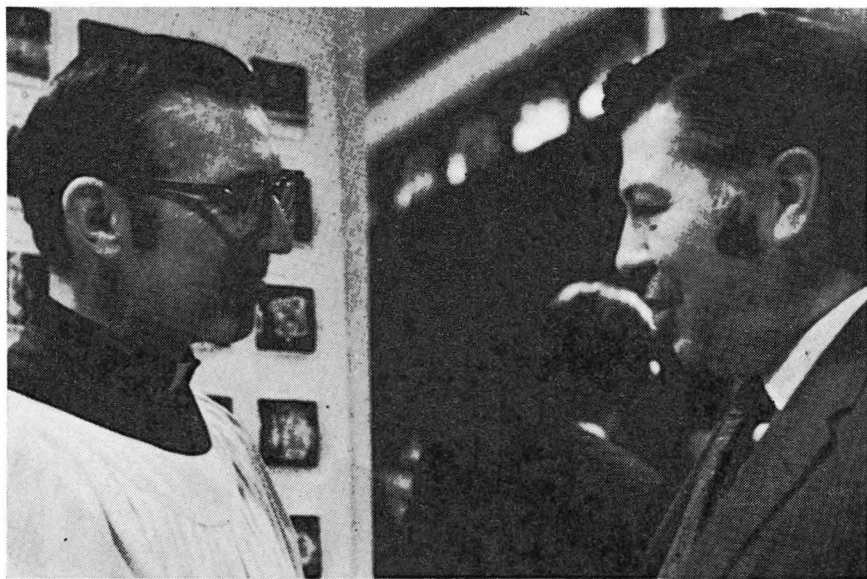
The appointments on the altar are kept simple so as not to detract from the worship but to direct the worshiper to the proper theme for the day. The rear projection screen in the right front wall is to help the worshipers with visual aids. The projectors are located in the room behind the pulpit and are controlled by switches from the pulpit. The kneelers in the pews — for confession and prayers — teach the attitude of humility.

The symbolic windows surrounding the sanctuary progress from the creation of the world, to the Old Testament patriarchs, the life of Christ, several of the disciples, to the final trumpet angel calling all of God's people to His eternal home. The entire sanctuary is carpeted to set a mood for worship.

On the north side of the building is located a small nursery area, to which the addition of a separate toilet facility is planned. Rolling partitions will be used to divide the remainder of the area for Sunday school and weekday school rooms.

The church office is located in the northeast corner of the building. From the office area you can walk behind the altar, in the enclosed room used by the choir and altar guild. The appointments for the altar will be kept in this area.

The south side of the building provides for a large meeting and fellowship hall with a kitchen attached. This part of the building could be expanded at a later date if it was deemed necessary. The masonry and wood construction on the outside give beauty and simplicity to the building.



Rev. Delbert Thies (left) greets Mr. Oscar Williams, father of a deaf son, after one of the three services conducted on the day of dedication of Eternal Mercy Congregation's new facility. Pastor Thies was guest preacher at all three services



One of the choirs of Eternal Mercy Congregation that sang the hymns for the dedication services. In front is Mrs. Geraldine Greer, leader. Left to right in the back row are Mrs. Erma Allen, Mrs. Veronica Arnold, Mrs. Gail Hayes, Mrs. Cora Lewis, and Mrs. Ethel Stewart



"THE Christian is not divine as long as anything human remains foreign to him. His heart should be a heart of flesh, the heart of the world. A day in which he fails to comfort or to give joy is a day wasted." (From *The Gospel of Joy* by Perrin)

Another Census

In cooperation with the Bureau of Statistics, the Board for Missions will soon conduct a survey and census of the sensory (blind and deaf) impaired in all hearing and deaf congregations of The Lutheran Church — Missouri Synod. This will help our church to provide further services for the sensory impaired, especially those scattered in outlying areas.

Backyard Mystery Found on Pre-Civil War Tombstone

"You must come over sometime and see our backyard tombstone," said Doris Myhre in the middle of a casual conversation.

Doris — Mrs. Harold Myhre of Milwaukee, Wis. — is an interpreter for the deaf at the Lutheran Lay Training Institute here. She is also a "fun person" with a marvelous sense of the ridiculous.

A reception followed each of the three services. In the picture on the left (l. to r.) are Miss Gwen Fitzgerald, Mr. Billy Fitzgerald Jr., Mrs. Carrie Herrman, Miss Beverly Willett, Miss Ola Mae Brewer, and Mrs. Elizabeth Maxwell

"Sure, you have a tombstone in your backyard. Hasn't everyone?" But Mrs. Myhre was serious.

The old stone had lain face down as long as anyone could remember. The Myhre's house is one of a group purchased under the Concordia College expansion program, which provides quarters for college and LLTI personnel at present. It is old enough to have a cistern in its basement; why not a tombstone?

An archaeological expedition was organized on the spot.

The party had no difficulty locating the flat slab next to the foundation wall at the rear of the house. Once turned over, its deeply incised lettering showed little trace of wear over the years. It read:

"Elisabeth, died Oct. 28, 1858, ae. 1 yr. & 10 ms.; Jane, died Oct. 26, 1858, ae. 7 ys.; Jane, died Oct. 22, 1858, ae. 5 ys.; children of R & J Moses."

The old marble record allows only speculation about the 112-year-old tragedy. What sudden epidemic perhaps took the lives of three children within 7 days. Who were R & J Moses, and what happened to them? Why were two sisters both named Jane?

The position of the slab gives no particular indication that the children were ever actually buried on the premises. But then, no one apparently has had the curiosity or hardihood to find out.

— *The Badger Lutheran*

TV News

Sioux Falls, S. Dak. As a public service KELO-TV has had its 6 p. m. Saturday news interpreted in the language of signs since Feb. 26.

Chicago, Ill. The newest television station in Chicago, WSNS-

TV, has come up with something of a novelty, much to the delight of the deaf in that area. Channel 44 of this network does nothing except print news, sports scores, time, weather reports, etc., 18 hours a day, 7 days a week.

What is TV doing for the deaf in your area?



LIGHT FOR YOUR WAY

Daily Bible Readings

May and June

Include the following in your prayers this month:

- that God would bless my family with friendship and love for each other.
- that parents in my congregation may rule their families wisely.
- our pastors, who must travel thousands of miles in all kinds of weather to serve the deaf in preaching stations and scattered areas.
- our church workers who celebrate birthdays this month:

Pastor Earl Thaler, West Hartford, Conn. (5-12)

Pastor George Winkler, Spokane, Wash. (5-12)

Mrs. Lois Fairman, lay worker's wife, Great Falls, Mont. (5-12)

Mrs. Janet Hewitt, pastor's wife, St. Louis, Mo. (5-16)

Pastor Louis Jasper, Kowloon, Hong Kong (5-19)

Mrs. Ethel Kosche, pastor's wife, Delavan, Wis. (5-22)

Mrs. Dorothy Mason, pastor's wife, Los Angeles, Calif. (5-22)

Mrs. Dorothy Frederking, pastor's wife, Phoenix, Ariz. (5-24)

Pastor Rodney Rynearson, Rochester, N. Y. (6-1)

Mrs. Viola Gerhold, pastor's wife, Newark, N. J. (6-6)

Mrs. Jane Hodgson, pastor's wife, Garden City, N. Y. (6-8)

Mrs. Carolyn Dorr, pastor's wife, Jackson, Miss. (6-10)

Mrs. Patricia Pokorny, pastor's wife, Washington, D. C. (6-10)

Mrs. Karen Gehrs, pastor's wife, Winnipeg, Man., Can. (6-14)

Mrs. Gwendolyn Johnson, pastor's wife, Detroit, Mich. (6-14)

Mr. Harold Myhre, parish worker's husband, Milwaukee, Wis. (6-17)

Mrs. Loleta Ziprick, lay assistant's wife, Calgary, Alta., Can. (6-17)
 Mrs. Rae deRose, parish worker, West Hartford, Conn. (6-18)
 Pastor Gerhard A. Gehrs Jr., Riverside, Calif. (6-19)
 Pastor C. Roland Gerhold, Newark, N. J. (6-26)
 Mrs. Selma Westermann, pastor's wife, Fort Wayne, Ind. (6-27)
 Pastor James Bengelsdorf, Des Moines, Iowa (6-28)
 Pastor Leroy Mason, Los Angeles, Calif. (6-30)

- May 1** — **1 Samuel 31:1-13.** Saul dies as an unbeliever in shame. Ask God to send His Spirit to all people in our nation. Pray that they see their sin and their need for repentance.
- May 2** — **1 Samuel 16:1-13.** God chooses a young man as king. Pray that many young people in our church will accept God's call to become pastors and teachers.
- May 3** — **1 Samuel 17:24-54.** A giant's boast is stopped. Pray for the courage to meet difficult times in your life with a strong faith and trust in God.
- May 4** — **1 Samuel 27:1-12.** David fights for Israel. Pray that God will bless the work of the members of your church as they serve Him.
- May 5** — **2 Samuel 2:1-11.** God's people elect a king. Pray that the parents in your church rule their families wisely.
- May 6** — **2 Samuel 5:1-12.** All Israel accepts David as their king. Pray for your congregation that God will unite all members under His guidance of love and forgiveness.
- May 7** — **2 Samuel 7:1-17.** God gives David a comforting promise. Pray that God may give you gladness as you do His work in your church.
- May 8** — **2 Samuel 7:18-29.** A great man humbly gives himself to God's will. Ask that God teach you and your family to humbly give yourselves to do His will.
- May 9** — **Psalms 1.** Be faithful to God and He will bless you. Pray for a stronger faith to resist sin and temptation so that you do not fall away from God.
- May 10** — **2 Samuel 11:2-12:23.** A terrible sin in the heat of the body's desire. Pray that God will save you from all temptation.
- May 11** — **Psalms 51.** David is truly sorry for his sin and prays to God with a repentant heart. Ask God to help you remember His mercy and willingness to forgive your sin.
- May 12** — **2 Samuel 15:1-18.** Absalom rebels against his father. Ask God to bless your family with friendship and love for each other.
- May 13** — **Psalms 42 and 43.** Separated from God and His place of worship, man feels lost and alone. Ask God to unite your congregation in its worship.
- May 14** — **2 Samuel 16:1-14.** King David is mocked and cursed, but he still shows mercy. Ask God to free you from the eagerness of revenge and the sin of pride.
- May 15** — **2 Samuel 18:19-33.** David grieves for the death of his son. Pray that your family continue in health and faith.

- May 16** — **2 Samuel 24:1-14.** Power and control brings the sin of pride. Pray that you remember that God rules.
- May 17** — **1 Kings 2:1-12.** The death of David the king. Pray that your family remains in love and forgiveness to the end.
- May 18** — **1 Kings 1:15-40.** David chooses a son as his successor. Pray that your children will have success in their life and faith.
- May 19** — **John 20:11-18.** Jesus' ascension brings Him close to us. Pray that you may always know that God is with you.
- May 20** — **1 Kings 3:3-15.** A wise man prays for wisdom. Pray for a knowledge of the truth and the wisdom to act according to it.
- May 21** — **1 Kings 3:16-28.** Solomon's wisdom shows itself. Pray that God will bless the work of your Lutheran Deaf Mission Society.
- May 22** — **1 Kings 6:1-18.** The house of God is planned. Pray for those who are building churches to the glory of God.
- May 23** — **1 Kings 8:1-21.** God's people dedicate the temple. Pray that your church may always remain a house of worship.
- May 24** — **1 Kings 8:22-53.** Solomon prays for forgiveness. Ask God to forgive all those who worship with you.
- May 25** — **1 Kings 10:1-25.** Godly wisdom is recognized by the world. Ask God to make His name known to all the world through His people in His church.
- May 26** — **1 Kings 11:1-13.** The temptation and fall of a wise man. Ask God to strengthen the faith of the rich and wise against their special temptations.
- May 27** — **Ecclesiastes 1:1, 2:1-26.** The emptiness of things. Pray that God would give you the strength to see the emptiness of worldly things. Pray for a heart that hopes for heaven.
- May 28** — **Ecclesiastes 12:1-14.** Advice from the wise for the young people. Pray that God will strengthen your children against the temptations of life.
- May 29** — **Acts 8:4-17.** The Holy Spirit lives in the church. Ask God to give your congregation a full measure of eagerness to do His work.
- May 30** — **Proverbs 2:1-22.** The advantages of accepting wisdom. Ask that your family and you may grow in knowledge and wisdom.
- May 31** — **1 Kings 11:23-43.** The death of Solomon. Ask God to support His people in faith to eternity.
- June 1** — **1 Kings 12:1-20.** The new king accepts wrong advice and loses his nation. Pray for peace in your nation and your world.
- June 2** — **1 Kings 17:1-24.** God's prophet sets himself against the king and his sinful nation. Ask God to give the pastors and teachers of your church the courage to stand against the sins of the world.
- June 3** — **1 Kings 18:20-40.** The test of truth — God's prophet against the false god. Ask God to keep His people faithful to Him.
- June 4** — **1 Kings 19:1-18.** God gives Elijah comfort and support in the time of his despair. Ask God to give hope and strength to the newly graduated pastors and teachers.

- June 5** — **1 Kings 19:19-21.** A prophet calls his successor. Your church needs many pastors. Pray that God will call many to choose the ministry of the church.
- June 6** — **2 Peter 1:16-21.** The Triune God makes Himself known. Pray that your church will teach all things in full truth.
- June 7** — **1 Kings 21:17-29.** The man of God has the courage to speak before the king. Pray that God would strengthen your church as it speaks against sin.
- June 8** — **2 Kings 1:1-17.** God condemns those who worship the false god of pride. Pray that your pastors and teachers remain humble before God.
- June 9** — **2 Kings 2:1-12.** A great man is taken home to God. Ask God to reward in grace all who have given their lives to Him.
- June 10** — **Matthew 11:1-15.** A conversation with the Lord Jesus. Pray that God will keep you in the hope of eternal life with Him.
- June 11** — **2 Kings 2:9-22.** Power is given by God. Pray that God will support the young pastors in the work of their ministry.
- June 12** — **2 Kings 5:8-27.** Slow to believe, Naaman is healed. Pray that God will give you the faith to trust His promises.
- June 13** — **2 Kings 6:8-23.** God defends His people with a miracle. Ask God to support and defend His church in its difficulties throughout the world.
- June 14** — **2 Kings 8:7-15.** God knows of evil before it happens. Pray that God will protect us from the violence of His enemies.
- June 15** — **2 Kings 13:14-21.** Elisha speaks for God eagerly and carefully until he dies. Ask God to keep you from selfishness and fear at your death.
- June 16** — **Hosea 1:1-11.** Hosea prophesies in his family life. Ask God to unite broken and divided families.
- June 17** — **Hosea 3:1-5.** A wife is brought back in love. Ask God to teach us to love one another as He loves us.
- June 18** — **Hosea 5:13—6:10.** The terrible sin of worshiping false gods by Israel, God's people. Pray that God would free our nation from our proud love and worship of worldly things.
- June 19** — **Hosea 14:1-9.** A plea to Israel to come back from sin to love God. Ask that God support us in time of sin that we repent and humble ourselves under His hand.
- June 20** — **Jonah 1:1-3.** Jonah runs away from God's call to duty. Pray that God encourage us to accept our calling.
- June 21** — **Jonah 1:4-16.** The man who ran from God's work is thrown overboard. Pray that God would support church workers in all their troubles.
- June 22** — **Jonah 1:17—2:10.** God prepares a rescue for His prophet. Pray for your pastor that God may strengthen him in his work.
- June 23** — **Jonah 3:1-10.** God's Word has power to change man's sinful heart. Pray that God's Word will work in the hearts of all members of your congregation.

- June 24 — Jonah 4:1-11.** A selfish man does not want God to share His love with sinners. Ask God to forgive our human selfishness.
- June 25 — Amos 1:1-2.** God calls a shepherd as His prophet. Pray that God will lead many young men to work with the deaf in our church's worldwide mission.
- June 26 — Amos 5:18-24.** God gives His prophet boldness and courage. Ask God to strengthen all who speak for Him.
- June 27 — Amos 7:1-9.** A prophet's prayer for God's people, Israel. Ask God to hear the prayers of His church.
- June 28 — Amos 7:10-17.** The man of God speaks with boldness to a king who refused to hear. Pray for the will to accept the responsibilities God gives you.
- June 29 — 2 Kings 18:1-8.** A good king chooses the Lord. Ask God to give understanding and a strong faith to His people.
- June 30 — 2 Chronicles 32:1-23.** God's people are saved from an enemy.

NOTICE

Are you going to ILDA? Then use the mailing card to reserve your room at the Regency Hyatt House. The pre-registration prices of \$18, \$22, and \$27 will go up after July 1 to the regular hotel rates of \$24, \$28, and \$34. Don't wait until the last minute! Send in your reservation *now*.

See Reservation Card



Roster of staff with teletypewriter (TTY) units:

Rev. Clark Bailey, Oakland, Calif. (415) 632-0845
 Mrs. Rae deRose, Newington, Conn. (203) 525-1295
 Rev. C. Roland Gerhold, Newark, N.J. (201) 485-2261
 Rev. Martin Hewitt, St. Louis, Mo. (314) 725-8349
 Rev. Daniel Pokorny, Beltsville, Md. (301) 937-2704
 Rev. Earl Thaler, West Hartford, Conn. (203) 523-0345
 Rev. Walter Westermann, Fort Wayne, Ind. (219) 485-0539

(Check for complete addresses and regular telephone numbers on the following page.)

Lutheran Deaf Mission Staff

Full-Time Pastors

Rev. Orlin S. Anderson, 104 Finley St., Jacksonville, Ill. 62650	(217) 243-2528
Rev. Clark R. Bailey, 2406 107th Avenue, Oakland, Calif. 94603	(415) 632-0845
Rev. Robert A. Bauer, 5808 113 B St., Edmonton, Alta., Can.	(403) 434-4246
Rev. James Bengelsdorf, 623 39th St., Des Moines, Iowa 50312	(515) 279-1998
Rev. John A. Beyer, 7619 193d Pl. SW, Edmonds, Wash. 98020	(206) 324-2200
Rev. W. Bottlinger, 4609 Watling St., S. Burnaby, Vancouver, B. C., Can.	(604) 433-1763
Rev. W. Busby, 314 St. George St., St. Augustine, Fla. 32084	(904) 829-6743
Rev. David Carstens, 1975 Maplewood Dr., S. E., Knoxville, Tenn. 37901	(615) 573-2082
Rev. Robert M. Corl, Jr., 1929 Huxley St., Madison, Wis. 53704	(608) 249-8076
Rev. Paul Dorr, 556 Dartmouth Dr., Jackson, Miss. 39205	(601) 922-8500
Rev. A. E. Ferber, 3807 Gilham Rd., Kansas City, Mo. 64111	(816) 561-3849
Rev. Kenneth Finnestad, 499 Oak Park Dr., London 14, Ont., Can.	(519) 471-8216
Rev. Theodore Frederking, 9902 N. 5th Ave., Phoenix, Ariz. 85021	(602) 944-1911
Rev. F. P. Gehrs, 694 Beaverbrook St., Winnipeg 9, Manitoba, Can.	(204) 489-6302
Rev. G. A. Gehrs, Jr., 6262 Soledad, Riverside, Calif. 92504	(714) 689-0843
Rev. C. Roland Gerhold, 510 Parker St., Newark, N. J. 07104	(201) 485-2260
Rev. Don Haug, 5411 Austin, Houston, Tex. 77004	(713) 529-5567
Rev. Martin Hewitt, 6301 Alamo, St. Louis, Mo. 63105	(314) 725-8349
Rev. Daniel Hodgson, 59 Maxwell Rd., Garden City, N. Y. 11530	(516) 248-2357
Rev. Louis R. Jasper, 20-C Star Court, 4 Man Wan Rd., Kowloon, Hong Kong	859687
Rev. Russel Johnson, 4911 Anna, Warren, Mich. 48092	(313) 751-5823
Rev. A. T. Jonas, 1207 S. Vermont Ave., Los Angeles, Calif. 90006	(213) 737-3963
Rev. Charles Jones, 1701 S. 8th Ave., Maywood, Ill. 60153	(312) 345-9081
Rev. Martin Kosche, 116 Walnut St., Delavan, Wis. 53115	(414) 728-5980
Rev. W. H. Lange, 5070 Lake Street, Omaha, Nebr., 68104	(402) 558-5672
Rev. Donald Leber, 4787 Scheibler Rd., Memphis, Tenn. 38107	(901) 386-3130
Rev. Roger Leonhardt, 308 E. 14th St., Devils Lake, N. Dak. 58301	(701) 662-3267
Rev. Wm. Ludwig, 360 Morse Road, Columbus, Ohio 43214	(614) 267-8163
Rev. Leroy W. Mason, 805 S. Chapel, Apt. Q, Alhambra, Calif. 91801	(213) 281-1740
Rev. Martin E. A. Mueller, 2571 N. Grant Blvd., Milwaukee, Wis. 53210	(414) 445-7231
Rev. George Natonick, 1021 S. E. 122nd Ave. — No. 6, Portland, Oreg. 97233	(503) 255-3850
Rev. Ervin Oermann, P. O. Box 1065, Milledgeville, Ga. 31061	(912) 452-3217
Rev. Daniel H. Pokorny, 4703 Montgomery Pl., Beltsville, Md. 20705	(301) 937-2704
Rev. Myron Prok, 1221 Virginia Ave., Lakewood, Ohio 44107	(216) 228-0776
Rev. Quintin Quade, 2308 D Avenue N. E., Cedar Rapids, Iowa 52402	(319) 364-6590
Rev. Richard Reinap, 205 N. Otis, St. Paul, Minn. 55104	(612) 824-9668
Rev. Geo. C. Ring, 2920 Gilmore Ave., Pittsburgh, Pa. 15235	(412) 243-6617
Rev. Rodney Rynearson, 328 Cromwell Dr., Rochester, N. Y. 14610	(716) 381-9481
Rev. Marlin Sampson, 2465 Donegal Ave., S. San Francisco, Calif. 94080	(415) 589-1246
Rev. Earl J. Thaler, 32 Brunswick Ave., W. Hartford, Conn. 06107	(203) 521-6677
Rev. Walter Uhlig, 605 S. Churchill Ave., Sioux Falls, S. D. 57103	(605) 336-9481
Rev. W. A. Westermann, 4712 Muirfield St., Fort Wayne, Ind. 46805	(219) 485-0539
Rev. George Winkler, 3614 W. Wellesley, Spokane, Wash. 99205	(509) 326-3227
Rev. Donald Zuhn, 12154 E. Ohio Ave., Aurora, Colo. 80010	(303) 366-7748

Part-Time Pastors

Rev. N. E. Borchardt, 11719 Evanston Ave., Detroit, Mich. 48213	(313) 527-7023
Rev. W. Ferber, 617 14th St., S., Fargo, N. Dak. 58101	(701) 235-5661
Rev. W. O. Neisch, 3502 Broad, Parkersburg, W. Va. 26104	(304) 428-5826
Rev. Delbert Thies, 3802 N. 48th St., Omaha, Nebr. 68104	(402) 453-8832

Lay Workers

Mr. Gilbert Berninghaus, 5070 Lake St., Omaha, Nebr. 68104	
Mr. Alex Brodie, Apt. 708, 706 Queens Ave., New Westminster, B. C., Can.	
Mr. Paul Consoer, 19080 N. W. 32nd Ave., Opa Locka, Fla. 33054	(305) 621-8950
Mr. Don Fairman, 5711 Second Ave. N., Great Falls, Mont. 59401	(406) 452-2382
Mr. Robert Henrikson, 360 Morse Rd., Columbus, Ohio 43214	(614) 882-6933
Mr. Marion Van Manen, 379 Greenlake Dr., Sunnyvale, Calif. 94086	(408) 734-1570
Mr. Harold Ziprick, 4328 Morley Trail, Calgary 48, Alta., Can.	(403) 282-7718

Parish Workers

Mrs. Rae deRose, 22 Main St., Newington, Conn. 06111	
Mrs. Judy Miller, 15000 N. W. 27th Ave., Opa Locka, Fla. 33054	(305) 688-0312
Mrs. Doris Myhre, 955 N. 34th St., Milwaukee, Wis. 53208	(414) 344-4786
Miss Victoria Soenksen, 712 Clairborne, Olathe, Kan. 66061	(913) 782-1693
Miss Carol Wackler, 205 N. Otis, St. Paul, Minn. 55104	(612) 454-3594

Vicars

Mr. Jerold Munz, 2940 Culver Rd., Apt. 4, Rochester, N. Y. 14622	(716) 266-2726
Mr. Marlow Olson, 1424 Park Ave., New Hyde Park, N. Y. 11040	

First Convention

International Lutheran Deaf Association

Chicago, Ill.

July 16—18, 1971

REGISTRATION FORM

Name _____

Address _____

City _____ State _____ ZIP _____

How many adults _____ How many children under 16 _____

- | | |
|--|--|
| <input type="checkbox"/> Deaf | <input type="checkbox"/> Member, The Lutheran Church — Mo. Synod |
| <input type="checkbox"/> Hard of Hearing | <input type="checkbox"/> Member, The American Lutheran Church |
| <input type="checkbox"/> Hearing | <input type="checkbox"/> Member, other Lutheran |
| | <input type="checkbox"/> Not Lutheran |

Number

Cost

Enclosed

_____ Registration (over 16 years old) \$ 1.00 \$ _____

_____ Saturday Noon Buffet 4.00 \$ _____

_____ Saturday Evening Banquet 10.00 \$ _____

_____ Sunday Breakfast 4.00 \$ _____

(Small children not occupying
seat — free)

_____ \$19.00 \$ _____

NOTE: Send in your registration before July 1 and the combination price is \$18 per person.

Make checks payable to: **International Lutheran Deaf Association**

Mail to: *Mrs. Robert Arman*
7721 W. Monroe Street
Forest Park, Ill. 60130

CHANGE OF ADDRESS

New Address:

Name _____

Street _____

City _____ State _____ ZIP _____

Mail to: The Deaf Lutheran

31 W. Beacon St.

West Hartford, Conn. 06119

Send old address label too

(Address Label)