



The Deaf Lutheran



Ephphatha, Be Opened

THE DEAF LUTHERAN

**Official Paper of the Board for Missions of
The Lutheran Church — Missouri Synod**

Rev. Herbert W. Rohe, Secretary for Deaf Missions, 210 N. Broadway, St. Louis, Mo. 63102. Ph. (314) 231-6969.

Published monthly by Concordia Publishing House, St. Louis, Mo. 63118. Subscription price, \$2.00 a year. Second-class postage paid at St. Louis, Mo.

THE DEAF LUTHERAN goes to press on the 1st Friday, 4 weeks before issue. Send all news, pictures, stories, and articles by the 12th of the month, 7 weeks before issue, to Rev. Martin A. Hewitt, Editor, 1221 Virginia Ave., Cleveland, Ohio 44107.

Change of address and subscriptions — THE DEAF LUTHERAN, 31 West Beacon St., West Hartford, Conn. 06119.

MOVING? CHANGING ADDRESSES?

Please clip the form on the inside back cover with the old address label.

Mail it to THE DEAF LUTHERAN, 31 W. Beacon St., West Hartford, Conn. 06119.

Can You Take a Challenge?

Asleep or Awake?

The challenge is to *grow*! We said last month that our deaf congregations have *potential power*, but it seems as if we are holding back, or perhaps we are asleep. In some areas we don't seem to be growing at all. The challenge of the Denver resolution (1-18a) is to grow! Remember what it says?

Resolved, That the deaf congregations, together with the Board for Missions and Ephphatha Conference, be urged to develop the potential of our ministry to the deaf to its fullest degree in matters of stewardship, evangelism, youth ministry, and expansion.

Let's look at that word *stewardship*. To be a steward is to be a manager. We manage everything God gives us — our homes, our jobs, our money, ourselves. Our congregations are blessings of God too, and He has given them to us to manage. How is our stewardship?

Have you ever cared for a flower garden? Is there anyone who doesn't enjoy the beauty of a colorful, delicate blossom? However, a flower is not all blossom.

It has roots, a stem, leaves, perhaps thorns — all contributing their share in the growing plant, producing the buds, the blossom, the seeds for continual life.

Pull off the leaves, break the stem, dig up the roots, and what is left of the blossom?

Perhaps a congregation may be compared to a growing flower. Think of the members as roots, stem, or leaves, each one contributing his share of time, ability, and money to a growing developing family that blooms with a living faith active in love.

By now our congregations' programs are in full swing again after the summer lull. Are we supporting these programs with our abilities and time?

Soon our officers will be planning our 1971 congregational pro-



grams and working on next year's budget. Will we support our growing churches with our pledges of money so that they can pay their own bills?

We have the potential power to grow. The challenge is to do *more* than our share.

REV. M. A. HEWITT

Editor's New Office

Rev. Martin A. Hewitt
The Deaf Lutheran
6301 Alamo Ave.
St. Louis, Mo. 63105

Trinity — 4

The Church Year Back Cover

Like Epiphany the length of the Trinity season is decided by the date of Easter. If Easter is late, Trinity will have only 23 Sundays. If Easter is early, Trinity season will have 27.

Now we enter the final part of the Sundays after Trinity. The end of the church year is near. In the previous three parts we noted how God called us to be His own, adopted us, made us right with Himself through Jesus, and en-

couraged us to live our faith in service and love. Now we look forward to the fulfillment of God's promises. We hope for the day of Christ's return.

Under the general theme, *The Consummation of the Kingdom* (Sundays 19—26, Oct. 4 to Nov. 22), we are encouraged to be faithful, to be strong in our faith, to keep an eye on heaven as our final and chief goal, and to be always ready for that Last Day.

Next: Reformation, Thanksgiving.

Notes of Interest

NTD Fall Tour

The National Theatre of the Deaf will embark on its seventh national tour this fall, and will perform in cities and towns across the northern U. S. from Connecticut to Washington state. The Company, comprised of twelve deaf and three hearing actors, will present two new productions from its growing repertoire.

"Woyzeck," adapted from the German classic by George Büchner, will be directed by Donald Redlich, who joins the Company in this capacity for the first time this year. The other piece, titled "Journeys," is a dramatic montage of selections from two remarkable collections of children's literature, *Journeys* and *Miracles*, edited by Richard Lewis. It will be directed by J. Ranelli, whose

NTD production of *Songs from Milk Wood* was critically acclaimed last season. As in previous years, the staging will be enhanced by the creations of Broadway designers David Hays (settings), Fred Voelpel (costumes), and John Gleason (lighting).

The National Theatre of the Deaf is a project of the Eugene O'Neill Theater Center. It was established in 1967 by a federal grant from the Rehabilitation Services Administration, with the aim of developing a professional company using deaf actors and having the language of signs as its artistic medium. From this basis the Company developed new and exciting stage techniques, incorporating movement and mime with simultaneous narration and

musical accompaniment, and making effective use of both comic and dramatic elements of sign language. The resulting art form has been described as "pure

art, drawn from a new region of human expression" (Samuel Hirsch, Boston Herald Traveler). It offers a unique experience to deaf as well as hearing audiences.



FIELD

GLEANINGS

Summer Camp

West Hartford, Conn. Ephphatha Camp for the Deaf, under the direction of Pastor Earl Thaler of West Hartford, Conn., just completed its 12th year. The camping program was held July 17—31 at Monadnock Bible Conference in Jaffrey Center, N. H.

This year a record enrollment

of 60 campers attended. Campers came from the following schools: Baxter State School for the Deaf of Portland, Maine; Crotched Mt. School for the Deaf of Greenfield, N. H.; Austin School for the Deaf of Brattleboro, Vt.; Beverly School for the Deaf of Beverly, Mass.; Boston School for the Deaf of Randolph, Mass.; Ameri-



Deaf campers enjoy a swim at West Hartford's Ephphatha Camp for the Deaf



Miss Ida Hutchings, teacher of the Austin School for the Deaf in Vermont, teaches a class at the Ephphatha camp. Another class meets in the background

can School for the Deaf of West Hartford, Conn.; Lutheran School for the Deaf, Mill Neck, N. Y.; and the New Jersey School for the Deaf, Trenton, N. J.

The camping program consists of opening prayer and pledge to the Christian and American flags, daily Bible classes, crafts, swimming, horseback riding, trips, hay rides, sports events, etc.

Another LWML Grant

Jacksonville, Ill. The Central Illinois District Lutheran Women's Missionary League at its June convention allocated \$3,888.91 to Christ Lutheran Church for the Deaf, Jacksonville, for renovations of the chapel. An additional

\$8,107.89, originally allocated for another missions project that did not develop, was also given to Christ Congregation.

Deaf Congregations Sign District Constitutions

In various parts of the country deaf congregations became official voting congregations of their respective Districts. Eternal Mercy, Memphis, Tenn., joined the Mid-South District; Calvary, Des Moines, Iowa — Iowa West District; Word of God, a field congregation headquartered at Cedar Rapids, Iowa — Iowa East District; Bethel, Denver — Colorado District; and Alpha, Rochester, N. Y. — Eastern District.

Ephphatha Conference Milwaukee, Wis.

A training workshop for preparing concept-related confirmation materials for the deaf highlighted the annual Ephphatha Conference of Lutheran pastors and workers of the deaf of The Lutheran Church — Missouri Synod at Concordia College, Milwaukee, June 26—July 2.

Mrs. Ann Bleuer, coordinator of the University of Wisconsin, conducted the 6-day workshop designed to give Ephphatha Conference pastors and workers insights into developing a manual for preparing deaf children and adults for church membership.

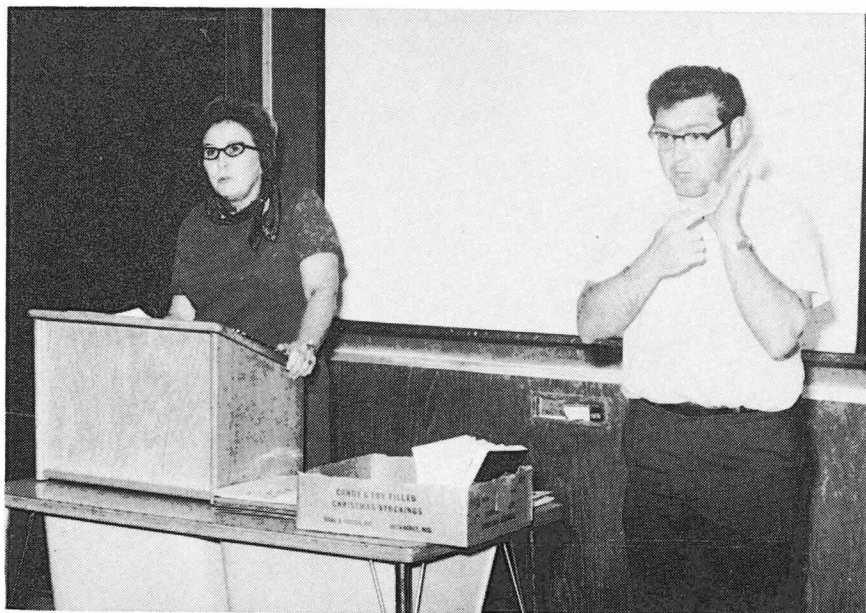
An experienced teacher of the deaf and an instructor in deaf education, Mrs. Bleuer developed

her unique approach to teaching religious concepts to the deaf in a Sunday school program for deaf children in five Milwaukee-area churches over the last 4 years.

Mrs. Bleuer, a mother of a deaf son now 20 years old, believes that deaf children taught from the age of three with concept-orientated materials would be fully prepared for church membership by confirmation age.

In summing up this year's conference, Rev. Herbert Rohe, secretary in ministry to the deaf, commented: "This has been one of the most successful and profitable conferences for our workers with the deaf in preparing them to meet the demands of their ministry."

The conference opened Thursday evening with a Holy Com-

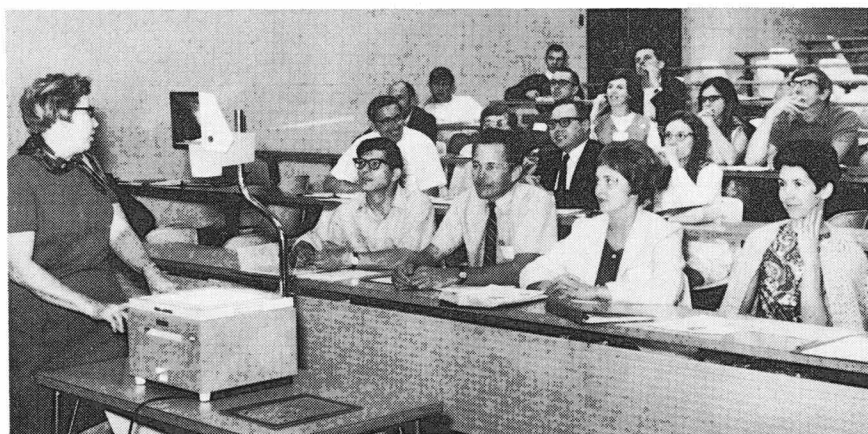


Pastor Larry Harris interprets Mrs. Bleuer's presentation

munion service hosted by Emmanuel Lutheran Church for the Deaf, Milwaukee. A light lunch was provided by the deaf congregation for the social hour that followed.

Besides the intensive workshop

the conference held sessions for Ephphatha concerns. Elected as conference officers were: Pastor Rodney Rynearson — Chairman, Pastor George Ring — Vice-Chairman, Robert Henrikson — Secretary, Pastor Charles Jones



Conference in session

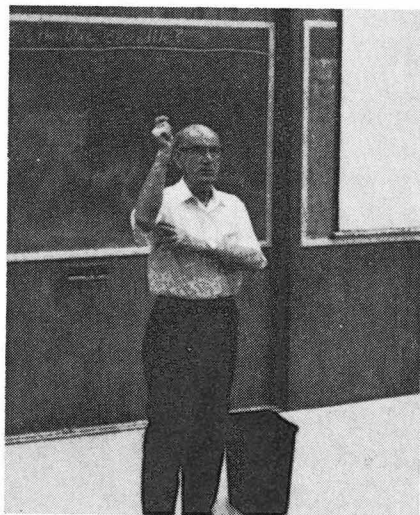


Workshops are for work



Preparing for the next session's
lecture

— Assistant Secretary and *Exchange* Editor, Pastor Fred Gehrs
— Program Committee. Other members of the program commit-



On Canada's Dominion Day, July 1,
Alex Brodie led the signing-singing
of "God Save the Queen"



Birthday flowers for Mrs. Doris
Myhre

tee previously elected are Pastors Daniel Hodgson and Larry Harris (chairman).

Recognized at the conference for special anniversaries of longevity in the ministry were: Pastor John A. Beyer — 51 years, Pastor Norbert Borchardt — 40 years, Pastor A. E. Ferber — 46 years, Pastor W. O. Ferber — 53 years, Pastor Theodore Frederking — 49 years, Pastor Martin Mueller — 39 years, Pastor Ernest Scheibert — 48 years, Pastor W. Westermann — 49 years, Pastor Clarence Bremer — 30 years, Pastor Herbert Rohe — 25 years, Pastor George Winkler — 15

years, Pastor Gerhardt Gehrs — 10 years, Pastor Leroy Mason — 10 years, Pastor James Bengelsdorf — 5 years, Pastor Paul Dorr — 5 years, Pastor Roger Leonhardt — 5 years, and Pastor Quintin Quade — 5 years.

We were very happy to see so many new faces at Ephphatha this year and missed some who could

not be present: Pastor Paul Dorr, Pastor Walter Uhlig, Pastor George Winkler, Pastor David Carstens, Marion Van Manen, Miss Victoria Soenksen, Miss Carol Wackler, Vicar Marlow Olsen, Vicar Jerold Munz, Robert Weiser, Robert Case (new deaf student at LLTI).

We also discussed the Interna-



Ephphatha Conference — 1970. Row 1, l. to r.: Rev. Herbert Rohe, Mrs. Lorraine Consoer, Mrs. Ann Bleuer, Mrs. Barbara Knetzger, Rev. Waldemar Ferber, Mrs. Ruth Olerogge, Don Fairman, Gilbert Berninghaus, Mrs. Gayle Berninghaus, Harold Ziprick, Mrs. Loleta Ziprick, Miss Carol Wackler
 Row 2: Paul Consoer, Rev. Daniel Hodgson, Mrs. Jane Hodgson, Mrs. Carol Jones, Rev. Charles Jones, Mrs. Doris Nyquist, Mrs. Linda Orne
 Row 3: Mrs. Altha Corl, Marion Van Manen, Mrs. Janice Van Manen, Pat deRose, Mrs. Rae deRose, Rev. William Ludwig, Rev. George Ring, Mrs. Doris Myhre, Rev. Martin Kosche, Miss Victoria Soenksen
 Row 4: Rev. Robert Corl, Alex Brodie, Rev. Martin Mueller, Rev. Arnold Jonas,

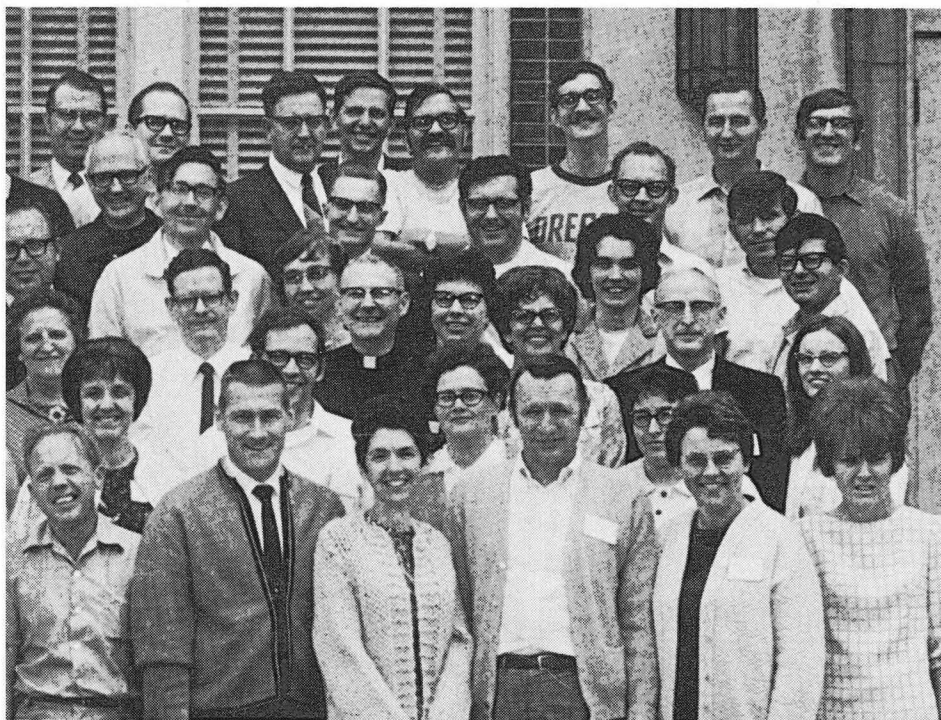
tional Lutheran Deaf Association (ILDA) about which we reported in last month's DEAF LUTHERAN.

Pastor Daniel Pokorny and Father Rudy Gawlik, chaplains at Gallaudet College, and "The Edge" rock music group entertained Ephphatha Conference and Milwaukee-area deaf with their unique and pleasurable Rock

Gospel program Saturday evening.

The 1971 Ephphatha Conference will meet in Chicago, July 14—22, in conjunction with the first convention of ILDA. Ephphatha Conference will participate in the ILDA convention July 16—18.

Next year's Ephphatha Conference program will include a fol-



Tom Truebenbach Photo

Rev. Wayne Bottlinger, Rev. William Lange, Mrs. Ellen Lange, Mrs. Dorothy Quade, Mrs. Shirley Harris, Rev. James Bengelsdorf

Row 5: Rev. John Beyer, Rev. Theo. Frederking, Robert Case, Mrs. Judy Miller, Rev. Stirling Simonson, Rev. Quintin Quade, Rev. Larry Harris, Rev. Orlin Anderson, Rev. Myron Prok

Top two rows: Rev. Frederick Gehrs, Vicar Marlow Olson, Rev. Marlin Sampson, Rev. Donald Leber, Rev. George Winkler, Rev. F. G. Gyle, Rev. Rodney Rynearson, Rev. Martin Hewitt, Rev. Clark Bailey, Rev. Russell Johnson, Rev. Walter Uhlig, Robert Henrikson, Rev. Walter Busby, Rev. George Natonick, Rev. Leroy Mason, Rev. Ervin Oermann

low-up of this year's conference on the confirmation manual plus two workshops—the first to develop evangelism materials for deaf lay visitors and the second to explore new forms of worship for the deaf.

Central Regional Conference

St. Louis, Mo. The annual Central Regional Conference was in St. Louis this year, July 17—19 at Concordia Seminary, the school where so many of our Lutheran pastors receive their education.

The days were hot and humid and the dormitory rooms did not cool off too much at night, but the meeting room was air-conditioned

and the sessions were lively and held the interest of all.

The inspirational part of the sessions centered in a study of three of the "Mission Affirmations" which have been adopted by our church body as policy or guides for all of our church work. The group was broken into six smaller buzz groups with a pastor from the region leading each group. These discussions led us to think seriously on the mission or work of the church—whose work is it? How large is the work? And how far should the church go in serving the needs of people?

A most important item on the agenda was the discussion of the



Newly elected to offices in the Central Region are (l.—r.): Joseph Kindred, Indianapolis — President; Harold Wood, Indianapolis — Vice-President; Mrs. Betty Healey, St. Louis — Secretary; Warren Riege, Milwaukee — Treasurer; Albert Arneson, Milwaukee — LDMS Adviser



Mrs. Sharon Schwarz (foreground, right, seated across from her husband William Schwarz) ably planned and hostessed the conference banquet

International Lutheran Deaf Association (ILDA). Warren Riege and Rev. Kosche gave background information and presented a proposed constitution for our consideration. The idea of ILDA has been discussed as long as 20 years ago. However the need for such a large association of Lutheran deaf is much greater right now than ever before. Since the Synod convention of 1965 dissolved the former Board for Missions to the Deaf, our Deaf Mission has been pretty much without a plan of administration. Several new plans of administration have been proposed, but the feeling is strong that we should not adopt any new plan until we know the thinking and the wishes of the deaf. Many of us feel that the deaf should be involved much

more in administering or managing their own church work, and the deaf should be active in setting up a new plan of administration. The united voice of Lutheran deaf is needed now. This is the moment of opportunity for Lutheran deaf to come forward, take up, and go forward with their church work on the national and worldwide level.

As a result of this discussion our region went on record as favoring ILDA and also voted in favor of having a constituting convention in Chicago July 16—18, 1971. We hope the other six regions will follow the zeal of our Central Region in this matter.

Let's begin talking it up and work for a big and successful ILDA convention in 1971.

The Saturday evening banquet

at the regional conference was held at the new and beautiful Holy Cross Lutheran Church for the Deaf, located not far from the famed arch in St. Louis. Main feature was a movie of a dramatic production "In the Good Old Summertime," performed by the St. Louis Deaf Drama Guild.

Rev. Clarence Bremer, who does part-time work among the deaf in Fulton, Mo., preached the sermon Sunday morning on the words of God to Moses at the Red Sea, "Tell the people to go forward." He applied the words to us and our church work among the deaf in these difficult times. God is still able to make a way for us to go forward and to succeed as He did for His people at the Red Sea long ago.

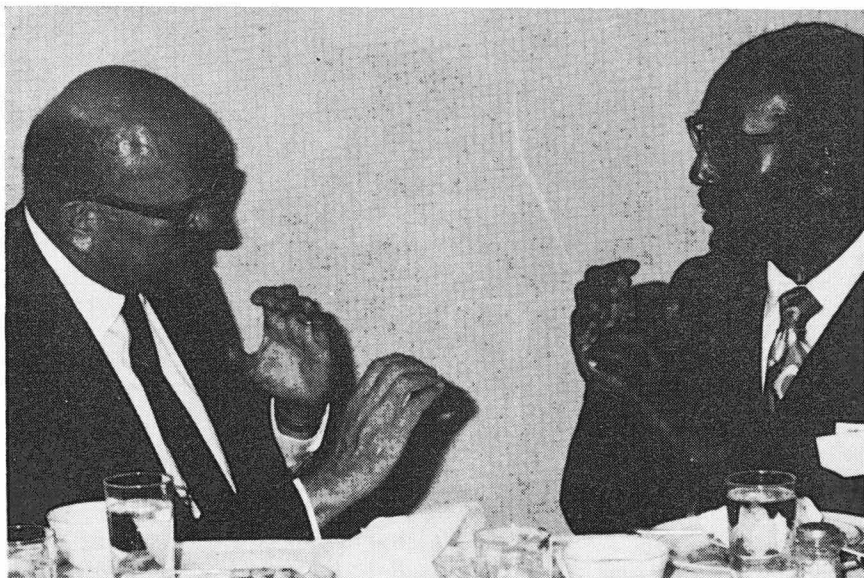
Joseph Kindred of Indianapolis is the new president, replacing Archie Marshall of St. Louis.

The good word is, "We'll see you in Chicago in '71."

REV. MARTIN KOSCHE
Regional Advisor

Deaf, Hearing Churches Merge for New Ministry

San Francisco, Calif. A unique merger of two congregations in San Francisco and the peninsula is developing. Shepherd of the Hills Lutheran Church and Peninsula Congregation of the Deaf, after conducting joint services since the beginning of May, are considering the complete merger of both congregations and ministries.



**Rev. Robert Corl, Madison, Wis., with Archie Marshall (right) of St. Louis,
this year's conference chairman**

At a June meeting Shepherd of the Hills adopted a resolution (1) inviting the members of the Peninsula Congregation to merge as soon as possible, (2) calling the Rev. Marlin Sampson, pastor of Peninsula Congregation, to become pastor of Shepherd of the Hills Church, and (3) requesting the District and Synod's Board for Missions to arrange for the new ministry.

Dr. Herman Heuer, pastor of Shepherd of the Hills Church, has announced his retirement from the ministry at the end of August.

One of the by-products of the joint services has been the organization of a class of 12 hearing people under Pastor Sampson's leadership to learn the language of signs.

— *The California and Nevada Lutheran Witness Edition*



LIGHT FOR YOUR WAY

Daily Bible Readings

Oct. 6—Nov. 16

Include the following in your prayers this month:

- that the Word of God may lead you strongly to place all your hope in Him.
- that God will give you strength to meet the problems of life with courage and faith.
- that God will give you His grace that you may understand yourself as a sinner, be brought in humility to repentance, and be raised in forgiveness to stand as one of God's people.
- that your worship, prayer, and Bible study may lead you to a greater zeal for the Lord's work.
- our church workers who celebrate their birthdays this month:
 - Pastor Theodore Frederking, Phoenix, Ariz. (10-10)
 - Pastor John Kiiffner, Georgetown, Ont., Can. (10-14)
 - Pastor Larry Harris, Toledo, Ohio (10-16)
 - Mrs. Carol Jones, pastor's wife, Chicago, Ill. (10-21)
 - Pastor James Benglesdorf, Des Moines, Iowa (10-26)
 - Mrs. Kathryn Zuhn, pastor's wife, Denver, Colo. (10-28)
 - Pastor Martin E. A. Mueller, Milwaukee, Wis. (11-1)
 - Pastor Robert Corl, Madison, Wis. (11-5)

Mrs. Shirley Harris, pastor's wife, Toledo, Ohio (11-11)
Pastor Russell Johnson, Great Falls, Mont. (11-16)

All Christians Are Priests of God

- Oct. 6 — Matthew 28:16-20.** We have *all* been called into the ministry.
- Oct. 7 — John 21:15-17.** Love for Christ is the one great requirement of ministry. Pray for willingness to accept responsibility for your children's faith.
- Oct. 8 — Matthew 4:18-22.** To serve God, we must forsake our own concerns.
- Oct. 9 — Jeremiah 31:31-34.** God has brought each of us into His new covenant.
- Oct. 10 — Ezekiel 33:1-9.** We are God's watchmen for the blessings of our friends. Give thanks for your hope of everlasting life.
- Oct. 11 — Matthew 5:38-48.** If we follow God, we show our love. Pray that God accept your congregation and its worship in forgiveness.
- Oct. 12 — Mark 5:1-20.** We are sent first to our own family and friends. Ask God to forgive the members of your family.
- Oct. 13 — Matthew 24:3-14.** We are the messengers of peace to a world in trouble. Give thanks for God's word of comfort and strength.

God Sends Ministers and Missionaries

- Oct. 14 — Matthew 9:35-38.** Jesus has begun the work to which we are called. Pray for God's blessings of peace for your pastor.
- Oct. 15 — Acts 13:1-4.** The church commissions its missionaries.
- Oct. 16 — Hebrews 13:7-19.** Our faith was brought to us by witnessing Christians.
- Oct. 17 — 1 Timothy 3:1-13.** The work of a congregation's pastor is a difficult work. Ask God to support with faith the teachers of your church.
- Oct. 18 — 1 Corinthians 3:5-15.** No pastor or teacher does his work without God. Ask God to bless the work of your Sunday school teachers.
- Oct. 19 — Luke 10:1-16.** God is known through the word of Christians.
- Oct. 20 — 1 Corinthians 9:13-23.** The work of God's ambassador is a joyous work.
- Oct. 21 — 2 Thessalonians 3:1-5.** Each missionary needs the prayers of the church. Pray for those who minister for God in primitive and difficult lands.
- Oct. 22 — Jeremiah 1:1-19.** God's ambassador must often speak against wickedness. Ask God to give courage to all His Christian missionaries.

God's People Confess Christ Before Men

- Oct. 23 — Luke 12:1-12.** The Christian cannot hide his faith. Pray for boldness in speaking of your hope.

- Oct. 24 — Romans 10:5-13.** Our faith will show itself in our words.
- Oct. 25 — Acts 4:13-22.** The world will recognize the power of God in His ambassadors.
- Oct. 26 — 2 Kings 19:20-34.** We are bold because our lives are in God's hands.
- Oct. 27 — John 9:13-34.** We speak of the blessings God has given us.

God's People Show Their Faith

- Oct. 28 — Matthew 5:13-16.** Our God is known by the way we live.
- Oct. 29 — 1 Peter 2:11-20.** Obedience to men shows our freedom in Christ.
- Oct. 30 — John 13:31-35.** God's forgiving grace is demonstrated first within the congregation.
- Oct. 31 — James 3:13-18.** The true Gospel brings peace between men.
- Nov. 1 — Luke 6:27-36.** Those who hate us need to know our faith.
- Nov. 2 — 1 Thessalonians 4:9-12.** A quiet life shows a trust in God.
- Nov. 3 — Titus 2:1-10.** The congregation also needs examples of Christian life.
- Nov. 4 — John 14:25-31.** The confidence of the Christian speaks of his trust in God.

God's People Honor Men of God

- Nov. 5 — Judges 6:25-32.** The courage of faithful men is our example. Give thanks for the witness of great men of God.
- Nov. 6 — 1 Kings 18:20-40.** God supports those who trust in Him. Pray for leaders to show us the will and the Word of God.
- Nov. 7 — 2 Kings 23:1-14.** The church's leaders must fight against unbelief and idolatry.
- Nov. 8 — Acts 19:8-20.** The power of God is shown through His witnesses. Pray for a mind to understand the Word when it is spoken.
- Nov. 9 — Romans 15:1-4.** Christian leaders are humble as Christ was humble. Pray that your church's leaders be given the insight to forgive.

True Faith Is Active

- Nov. 10 — Luke 13:6-9.** God looks for fruit in His followers. Ask forgiveness for your fear to let your faith be known.
- Nov. 11 — Philippians 2:12-18.** The Christian faith is a joyful faith.
- Nov. 12 — 2 Peter 1:1-11.** Our life grows as we practice the grace of God.
- Nov. 13 — Matthew 25:14-30.** Fear keeps us from using our gifts.
- Nov. 14 — Matthew 19:16-22.** The way of Christ is not an easy way. Thank God for giving you full responsibility in your faith.
- Nov. 15 — 1 Peter 4:1-11.** God's calling demands decision from us.
- Nov. 16 — Revelation 2:1-7.** An inactive love is always lost. Ask forgiveness for your mistakes through which others have been hurt.

Lutheran Deaf Mission Staff

Full-Time Pastors

Rev. Orlin S. Anderson, 104 Finley St., Jacksonville, Ill. 62650	(217) 243-2528
Rev. Clark R. Bailey, 2406 107th Avenue, Oakland, Calif. 94603	(415) 632-0845
Rev. Robert A. Bauer, 5808 113 B St., Edmonton, Alta., Can.	(403) 434-4246
Rev. James Bengelsdorf, 623 39th St., Des Moines, Iowa 50312	(515) 279-1998
Rev. John A. Beyer, 1101 15th Ave., Seattle, Wash. 98122	(206) 324-2200
Rev. N. E. Borchardt, 11719 Evanston Ave., Detroit, Mich. 48213	(313) 527-7023
Rev. W. Bottlinger, 4609 Watling St., S. Burnaby, Vancouver, B. C., Can.	(604) 433-1763
Rev. W. Busby, 19722 N. E. 13 Place, North Miami Beach, Fla. 33162	(305) 949-9712
Rev. David Carstens, 1975 Maplewood Dr., S. E., Knoxville, Tenn. 37901	
Rev. Robert M. Corl, Jr., 1929 Huxley St., Madison, Wis. 53704	(608) 249-8076
Rev. Paul Dorr, 556 Darkmount Dr., Jackson, Miss. 39205	
Rev. A. E. Ferber, 3807 Gilham Rd., Kansas City, Mo. 64111	(816) 561-3849
Rev. Theodore Frederking, 9902 N. 5th Ave., Phoenix, Ariz. 85021	(602) 944-1911
Rev. F. P. Gehrs, 694 Beaverbrook St., Winnipeg 9, Manitoba, Can.	(204) 489-6302
Rev. G. A. Gehrs, Jr., 6262 Soledad, Riverside, Calif. 92504	(714) 689-0843
Rev. C. Roland Gerhold, 510 Parker St., Newark, N. J. 07104	(201) 485-2260
Rev. Larry Harris, 3118 Glencairn, Toledo, Ohio 43614	(419) 382-2766
Rev. Don Haug, 5411 Austin, Houston, Tex. 77004	(713) 529-5567
Rev. Martin Hewitt, 6301 Alamo, St. Louis, Mo. 63105	(314) 725-8349
Rev. Daniel Hodgson, 59 Maxwell Rd., Garden City, N. Y. 11530	(516) 248-2357
Rev. Louis R. Jasper, 20-C Star Court, 4 Man Wan Rd., Kowloon, Hong Kong	859687
Rev. Russel Johnson, 701 Ella Ave., Great Falls, Mont. 59401	(406) 452-2382
Rev. A. T. Jonas, 1207 S. Vermont Ave., Los Angeles, Calif. 90006	(213) 737-3963
Rev. Charles Jones, 1701 S. 8th Ave., Maywood, Ill. 60153	(312) 345-9081
Rev. Martin Kosche, 116 Walnut St., Delavan, Wis. 53115	(414) 728-5980
Rev. W. H. Lange, 5070 Lake Street, Omaha, Nebr., 68104	(402) 558-5672
Rev. Donald Leber, 4787 Scheibler Rd., Memphis, Tenn. 38107	(901) 386-3130
Rev. Roger Leonhardt, 308 E. 14th St., Devils Lake, N. Dak. 58301	(701) 662-3267
Rev. Wm. Ludwig, 360 Morse Road, Columbus, Ohio 43214	(614) 267-8163
Rev. Leroy W. Mason, 5324 Parkmor Rd., Calabasas, Calif. 91302	(213) 880-4521
Rev. Martin E. A. Mueller, 2571 N. Grant Blvd., Milwaukee, Wis. 53210	(414) 445-7231
Rev. George Natonick, 1021 S. E. 122nd Ave. — No. 6, Portland, Oreg. 97233	(503) 255-3850
Rev. Ervin Oermann, P. O. Box 1065, Milledgeville, Ga. 31061	(912) 452-3217
Rev. Daniel H. Pokorny, 4703 Montgomery Pl., Beltsville, Md. 20705	(301) 937-2704
Rev. Myron Prok, 8254 Taunton Rd., Indianapolis, Ind. 46260	(317) 253-1796
Rev. Quintin Quade, 2308 D Avenue N. E., Cedar Rapids, Iowa 52402	(319) 364-6590
Rev. Geo. C. Ring, 2920 Gilmore Ave., Pittsburgh, Pa. 15235	(412) 243-6617
Rev. Rodney Rynearson, 328 Cromwell Dr., Rochester, N. Y. 14610	(716) 381-9481
Rev. Marlin Sampson, 2465 Donegal Ave., S. San Francisco, Calif. 94080	(415) 589-1246
Rev. Earl J. Thaler, 32 Brunswick Ave., W. Hartford, Conn. 06107	(203) 521-6677
Rev. Walter Uhlig, 605 S. Churchill Ave., Sioux Falls, S. D. 57103	
Rev. W. A. Westermann, 809 Fairmont, Greensboro, N. C. 27401	(919) 274-7251
Rev. George Winkler, 3614 W. Wellesley, Spokane, Wash. 99205	(509) 326-3227
Rev. Donald Zuhn, 12154 E. Ohio Ave., Aurora, Colo. 80010	(303) 366-7748

Part-Time Pastors

Rev. Clarence Bremer, 1701 Plaza Drive, Fulton, Mo. 65251	(314) 642-4737
Rev. W. Ferber, 617 14th St., S., Fargo, N. Dak. 58101	(701) 235-5661
Rev. John Kliffner, 11 Delrex Blvd., Georgetown, Ont., Can.	(416) 877-9735
Rev. W. O. Neisch, 3502 Broad, Parkersburg, W. Va. 26104	(304) 428-5826
Rev. Delbert Thies, 1629 Country Club Ave., Omaha, Nebr. 68104	(402) 558-5311

Lay Workers

Mr. Gilbert Berninghaus, 5070 Lake St., Omaha, Nebr. 68104	
Mr. Alex Brodie, Apt. 708, 706 Queens Ave., New Westminster, B. C., Can.	
Mr. Paul Consoer, 19080 N. W. 32nd Ave., Opa Locka, Fla. 33054	(305) 621-8950
Mr. Don Fairman, 4523 N. Royal Ct., Spokane, Wash. 99205	(509) 326-0127
Mr. Robert Henrikson, 360 Morse Rd., Columbus, Ohio 43214	(614) 882-6933
Mr. Marion Van Manen, 379 Greenlake Dr., Sunnyvale, Calif. 94086	(408) 734-1570
Mr. Harold Ziprick, 15 Rossmere Rd., S. W. Calgary 5, Alta., Can.	(403) 282-7718

Parish Workers

Mrs. Rae deRose, 22 Main St., Newington, Conn. 06111	
Mrs. Judy Miller, 15000 N. W. 27th Ave., Opa Lacka, Fla. 33054	(305) 688-0312
Mrs. Doris Myhre, 955 N. 34th St., Milwaukee, Wis. 53208	(414) 344-4786
Miss Victoria Soenksen, 712 Clairborne, Olathe, Kan. 66061	(913) 782-1693
Miss Carol Wackler, 205 N. Otis, St. Paul, Minn. 55104	(612) 339-5375

Vicars

Mr. Jerold Munz, 2940 Culver Rd., Apt. 4, Rochester, N. Y. 14622	
Mr. Marlow Olson, c/o pastor, 59 Maxwell Rd., Garden City, N. Y. 11530	

The Christian Year symbol reproduced by permission of Augsburg Publishing House, copyright owner. Copyright 1967.

Leave old address attached
to other side

CHANGE OF ADDRESS

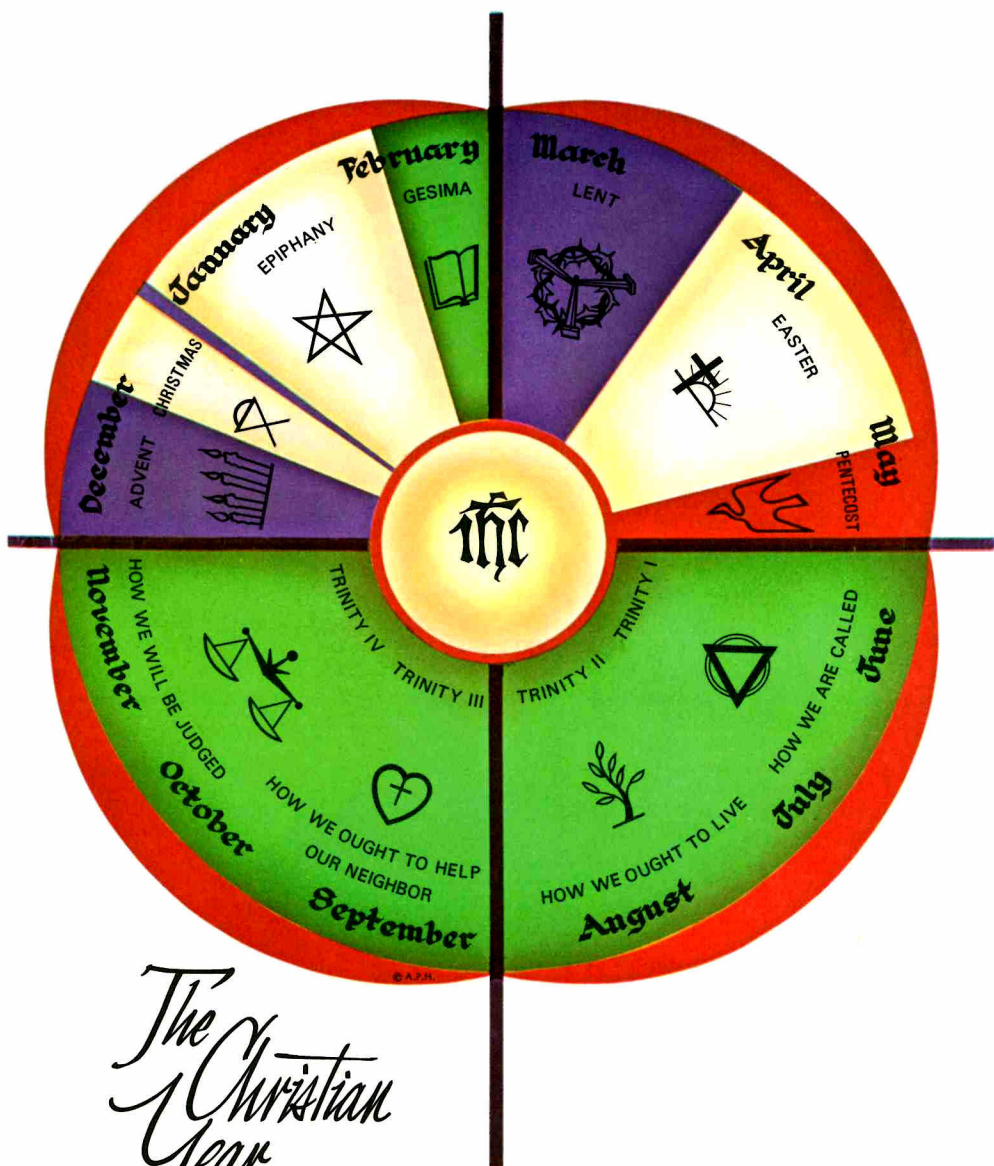
New Address:

Name _____

Street _____

City _____ State _____ ZIP _____

Mail to: The Deaf Lutheran
31 W. Beacon St.
West Hartford, Conn. 06119



The Christian Year