

# The Deaf Lutheran

A MISSIONARY MONTHLY

*Published by the Board of Missions for the Deaf  
The Lutheran Church — Missouri Synod*

Published monthly by Concordia Publishing House, St. Louis 18, Mo. Subscription price, 25 cts. per annum anywhere in the world, payable strictly in advance. Entered as second-class matter at the Post Office at St. Louis, Mo., under the Act of March 3, 1879. Acceptance for mailing at special rate of postage provided for in Section 1103, Act of October 3, 1917, authorized on January 14, 1935

Vol. 41

St. Louis, Mo., November, 1949

No. 11

## The Lord is Good

The Lord is good. Faint heart, arise  
And seek a balm for all your woes.  
The Lord is good. He hears your cries  
And all your sins and weakness knows.

Sad heart, why go your way alone?  
A Stronghold is the Lord, your God.  
He would your troubles make His own  
And strengthen you. The Lord is good.

Then seek the Lord, O burdened heart!  
He knoweth them that trust in Him.  
Sweet balm and strength He doth impart  
And faith to say, "The Lord is good."



## A Day of Thanksgiving

As Christians the fitting and proper way to offer thanks to God on this special day is to attend services for prayer and songs of praise.

Perhaps you feel that you have little or nothing for which to be thankful. It is true that the aftermath of World War II has left the world in confusion. Food and merchandise are high and hard to find. Many cannot find homes to live in; there are discontent

and strikes. Yet there are many things to be thankful for.

We have in our country food and more merchandise than other peoples. We have freedom of speech and the right to govern ourselves and to worship God in accordance with the dictates of our conscience. We have the Bible, the Church of Christ, which preaches the unadulterated Word of God and Luther's doctrine pure. We have Jesus, the world's Redemer, to forgive our sins; He gives us the glorious hope of freedom from hell, death, and the devil; He leads us to eternal life and joy. Let us thank God for these divine blessings!

O. C. S.

## Dedication of Parsonage and Youth Center of the First Lutheran Church for the Deaf, Washington, D. C.

On Sunday morning, Sept. 25, the altar in First Lutheran Church for the Deaf at Washington, D. C. was dedicated to the service of God. The Rev. Floyd Possehl delivered an inspiring sermon, and the chapel was crowded to the very doors.

The choir of our Lutheran congregation for the deaf at Baltimore, Md., sang "Now Thank We All Our God," and the choir of First Lutheran Congregation at Washington, composed of Gallaudet College students, rendered "The Church's One Foundation."

The pastor of the church, the Rev. W. Westermann, performed the rites of dedication.

One of the main attractions in the chapel is the beautiful painting above the altar. It was done by a friend, Mr. Hageman of New York, and shows Christ the Good Shepherd

holding a black lamb in His arms symbolizing the love of Christ for sinners.

The God of Love grant that we all, and many more of our deaf friends, will be regular and faithful attendants at this altar.

At noon a lunch was served in the base-



**Parsonage and Youth Center**

First Lutheran Church for the Deaf, Washington, D. C.

ment of Christ Lutheran Church. Then the deaf of Baltimore and the deaf of Washington had the opportunity to meet and learn to know one another better. At 3 P. M. the entire congregation went to the newly acquired parsonage to dedicate it to the service of God, and also the home center for the deaf of Washington. Rev. Wm. Bruening of Christ Church performed the dedicatory rites. Open house was held, and all had the opportunity to see the house and the Youth Center.

May the house and the Center be a place where many of our students of Gallaudet College and Kendall School find a home away from home and where they will learn more about their God and Savior.

W. W.

### **Rev. Clarence Bremer**

On Feb. 10, 1914, near Nashua, Minn., a very small but precious package arrived at the Bremer farm home in the person of little Clarence, weighing only three and one-half pounds. In spite of this small beginning, however, it soon became evident that this little fellow would overcome his handicap and grow up into a robust young man.

Young Clarence began his educational career in a small one-room country school building not far from his home. He says he does not remember when he decided to prepare for

the ministry. That seemed to be his intention and hope from earliest childhood. After graduating from the eighth grade he spent one school term in the study of the Catechism and Bible history before confirmation and then entered Concordia College at St. Paul, Minn., in the fall of 1929 to prepare for the holy ministry. He graduated from the institution in 1935 and then continued his studies at Concordia Seminary in St. Louis, Mo. With a group of students at the Seminary he became interested in the study of the sign language and learned the fundamentals of the language of the deaf under the guidance of the sainted Pastor F. Hischke and later under Pastor N. P. Uhlig.

One year, 1937—1938, was spent as vicar at Akeley, Minn., where student Bremer and the local pastor served seven preaching stations, including a T. B. Sanatorium and a C. C. C. camp.

After finishing his Seminary course he received the call to serve the congregations at Akeley and Bodoura, Minn. On April 14, 1940, Candidate Bremer was ordained and installed by the Rev. F. M. Miller at Akeley, and he served here as pastor of these two hearing congregations for one year and eight months. In December, 1941, Pastor Bremer was called by the Board of Missions to the Deaf and Blind to assist the Rev. O. C. Schroeder in publishing literature in Braille for the blind. He had charge of the library for the blind, prepared Braille books, and sent books in both Braille and Moon type to blind persons in all parts of the United States and also some foreign lands.

While in Chicago, Pastor Bremer also had the opportunity to preach to congregations of the deaf at Logansport and Kokomo, Ind., Rockford, Ill., and Delavan, Wis., also instructing the Lutheran pupils at the Winconsin State School for the Deaf at Delavan.

In May, 1946, Pastor Bremer accepted the



**Rev. Clarence Bremer**

call of Grace Lutheran Deaf Congregation at Minneapolis, Minn., succeeding the Rev. A. Lutz, who had accepted a foreign-mission call to India. On June 2 of that year he was installed as pastor of the Minneapolis deaf congregation by Dr. J. L. Salvner, and he has served this congregation and the surrounding territory faithfully until the present time. Dr. Salvner, long-time pastor of Grace Lutheran Congregation and the present Executive Secretary of the Board of Mission to the Deaf, became assistant pastor, helping wherever and whenever needed.

On the itinerary of the Minneapolis missionary are the following stations: Mankato, Duluth, Cloquet, Grand Rapids, St. Cloud, Little Falls, Minn., and Superior, Wis., also the State hospitals at St. Peter, Anoka, and Willmar, Minn., the assistant pastor serving the last two stations most of the time. The State School for the Deaf at Faribault, Minn., is visited regularly, and instruction in the Christian religion is given to a large number of the pupils at this institution by Pastor Bremer together with the St. Paul missionary, the Rev. F. Cordes. At the Minneapolis Oral School for the Deaf the pastor's wife assists the pastor every week in religious instruction. At the Oral School also V. B. S. classes were held in June with a fine attendance.

Grace Lutheran Deaf Congregation at Minneapolis has at present 103 communicant members, and there are 156 communicants in the entire field served by Pastor Bremer. The congregation in Minneapolis was organized by Dr. Salvner in 1909, and the present church and parsonage building was erected in 1915.

The envelope system of contributions has been used in Grace Congregation for quite some time, and all other communicants in the area also are supplied with individual envelopes. Seventy dollars toward the pastor's salary is raised each month by Grace Congregation, besides upkeep expenses. The various preaching stations are raising a total of fifteen dollars a month.

In Minneapolis there are three organized societies working in the interest of the local congregation and the church at large, namely, the Ladies' Aid, the Home Circle, which provides opportunity for sociability once a month, and the Oral Society, consisting chiefly of a group of young people who are lip readers.

The members of these three societies have been very active in giving of their time and labor and special contributions toward the maintenance of the church parlors and the enlargement and improvement of the church kitchen.

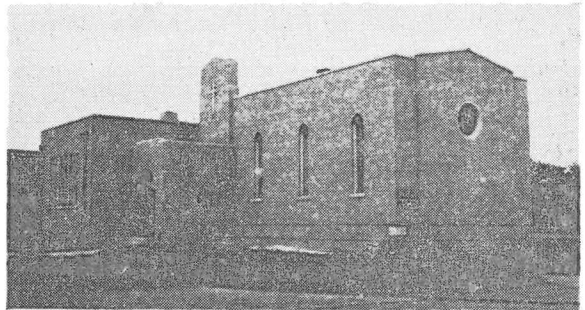
Pastor Clarence Bremer was married to Miss Eleanor Brose on June 13, 1942, at St. Paul, Minn., while he was serving as missionary to the blind and deaf in Chicago.

In the local Twin Cities Pastoral Conference he served as secretary-treasurer for one year, and as a member of our Ephphatha Lutheran Conference of missionaries to the deaf he has served on numerous committees during the past few years.

We pray the Lord's continued blessing upon the home and labors of this our fellow pastor in the blessed work among the deaf, and may these blessings flow in abundance also upon the souls under his spiritual care in the Minnesota field.

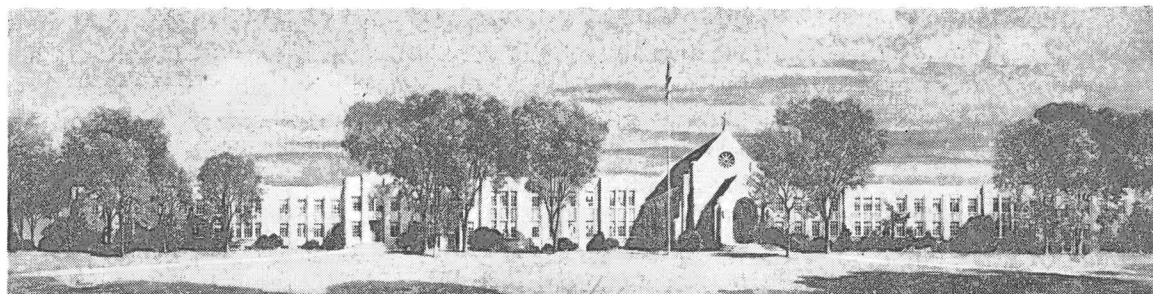
### **Dedication of Christ Lutheran Church for the Deaf, Cleveland, Ohio**

Christ Lutheran Church of Cleveland, Ohio, was dedicated on the 2d Sunday after Trinity, June 26. Two dedicatory services were held, in which Rev. Theo. Dorn and



Rev. John H. Meyer, President of the Central District, preached the sermons. Four of our ministers to the deaf interpreted, namely, Rev. N. E. Borchardt, Rev. Herbert Rohe, Rev. J. Beyer, and Rev. E. Scheibert. Two choirs of Cleveland and Akron, robed in beautiful gowns, interpreted the hymns. Over 500 persons attended the two services, and \$700 was received in the collections.

As can be seen from the picture, the church is built in modernistic style and can seat 100 persons. In the wing to the rear, which is the



**Lutheran School for the Deaf, Detroit, Michigan. J. A. Klein, Director**  
6861 Nevada Avenue, Detroit 34, Mich.

social hall, 100 more persons can so be seated as to have full view of the altar. All interior furnishings of the church, except four pews, are gifts from individuals or groups. The hall, adjoined to the rear of the church, has a stage, church office, and kitchen, and can seat over 125 persons. The entire structure costs about \$64,000. We owe special thanks to the Lutheran Women's Missionary League, to the Board of Directors, to the Mission Board, and to Central District churches, all of whom have contributed great amounts to make our church possible. The church is centrally located, one mile from downtown, so that it is easily accessible for all persons concerned. We now pray God that He may greatly bless us in our new house of worship, that we may use it to His glory and the blessing of many immortal souls.

THEO. FREDERKING

*Pastor of Christ Lutheran Church*



**Members of a double-wedding party. They were married at Washington, D. C., by Pastor W. Westermann on May 29, 1949**  
L. to R.: Julius Peirce Seeger from Texas. Mrs. Seeger, nee Ruth Mae Taubert from Minnesota. Rev. W. Westermann, Mrs. Schmidt, nee Ailene Clarice Hoare from California. Murton Schmidt from Wisconsin

### Lutheran Ministers to the Deaf

Rev. J. A. Beyer, 1101-15th Ave., Seattle 22, Wash.  
Rev. N. E. Borchardt, 11719 Evanston Ave., Detroit 13, Mich.  
Rev. C. Bremer, 1221 22d Ave., N., Minneapolis 11, Minn.  
Rev. R. F. Cordes, 1162 Marshall Ave., St. Paul 4, Minn.  
Rev. Theo. De Laney, 2105 Wilson St., Austin, Tex.  
Rev. A. E. Ferber, 3807 Gillham Rd., Kansas City 2, Mo.  
Rev. W. Ferber, 617 14th St., S., Fargo, N. Dak.  
Rev. Theo. Frederking, 12322 Phillips Ave., Cleveland 8, Ohio.  
Rev. G. W. Gaertner, Ph. D., 3233 62d Ave., Oakland 3, Calif.  
Rev. C. Roland Gerhold, 34 Walnut St., Watertown, Mass.  
Rev. Francis G. Gyle, 8011 Nola, St. Louis 14, Mo.  
Rev. A. L. Hauptman, 610 9th St., S., Great Falls, Mont.  
Rev. A. T. Jonas, 1746 W. 46th St., Los Angeles 37, Calif.  
Rev. Martin Kosche, 126 W. 32d St., Indianapolis 8, Ind.  
Rev. George Kraus, 91-35 96th St., Woodhaven 21, L. I., N. Y.  
Rev. E. Mappes, 5070 Lake St., Omaha 4, Nebr.  
Rev. Martin E. A. Mueller, 1717a W. Meinecke Ave., Milwaukee 6, Wis.  
Rev. Floyd Possehl, 12 Russell Ave., Nutley 10, N. J.  
Rev. Geo. C. Ring, 5723 Washington, S. E., Portland, Oreg.  
Rev. Herbert W. Rohe, 513 Roslyn Place, Pittsburgh 6, Pa.  
Rev. J. L. Salvner, D. D., 3320 Chowen Ave., N., Robbinsdale 22, Minn.  
Rev. E. Scheibert, 1400 N. Ridgeway Ave., Chicago 51, Ill.  
Rev. Curtis Schleicher, 235 S. Euclid, Sioux Falls, S. Dak.  
Rev. N. P. Uhlig, 134 Prospect St., Jacksonville, Ill.  
Rev. W. Westermann, 1728 Varnum St., N. W., Washington 11, D. C.

### Minister to the Deaf and the Blind

Rev. O. Schroeder, B. D., 1648 E. 85th St., Chicago 17, Ill.

These ministers preach in more than 200 cities in our land; they conduct classes in religion at many State schools for the deaf. You will find them ready to serve you; call upon them or write to them. The deaf need God's word.

### BOARD OF MISSIONS TO THE DEAF

**Pastor Wm. Buege, chairman**, 3236 34th Ave., S., Minneapolis 6, Minn.  
**Pastor C. C. Niemann, secretary**, 1301 Maywood St., St. Paul 3, Minn.  
**Mr. G. F. Kruse, treasurer**, 1861 Randolph St., Apt. 204, St. Paul 5, Minn.  
**Pastor O. H. Lottes**, 4842 Portland Ave., Minneapolis 7, Minn.  
**Mr. J. P. Miller**, 1104 Vincent Ave., S., Minneapolis 5, Minn.  
**Pastor J. L. Salvner, D. D., executive secretary**, 3320 Chowen Ave., N., Robbinsdale 22, Minn.

### The Deaf Lutheran

Official Organ of Lutheran Church Missions for the Deaf  
Published Monthly

Twenty-Five Cents per Annum in Advance

Send all subscriptions, changes of address, and cancellations to **Concordia Publishing House, 3558 S. Jefferson Ave., St. Louis 18, Mo.**

The DEAF LUTHERAN goes to press on the 12th of the month preceding month of issue.

Rev. O. C. Schroeder, B. D., Editor, 1648 E. 85th St., Chicago, Ill. Send all news items intended for publication in this monthly to Rev. E. Mappes, Associate Editor, 5070 Lake St., Omaha, Nebr.

PRINTED IN U. S. A.